



SZABO SCANDIC

Part of Europa Biosite

Produktinformation



Forschungsprodukte & Biochemikalien



Zellkultur & Verbrauchsmaterial



Diagnostik & molekulare Diagnostik



Laborgeräte & Service

Weitere Information auf den folgenden Seiten!
See the following pages for more information!



Lieferung & Zahlungsart

siehe unsere [Liefer- und Versandbedingungen](#)

Zuschläge

- Mindermengenzuschlag
- Trockeneiszuschlag
- Gefahrgutzuschlag
- Expressversand

SZABO-SCANDIC HandelsgmbH

Quellenstraße 110, A-1100 Wien

T. +43(0)1 489 3961-0

F. +43(0)1 489 3961-7

mail@szabo-scandic.com

www.szabo-scandic.com

[linkedin.com/company/szaboscandic](https://www.linkedin.com/company/szaboscandic) 

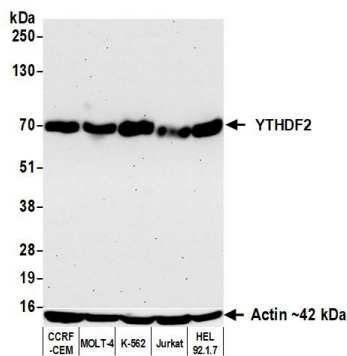
YTHDF2 Recombinant Monoclonal Antibody [BLR297M]

Rabbit Recombinant Monoclonal

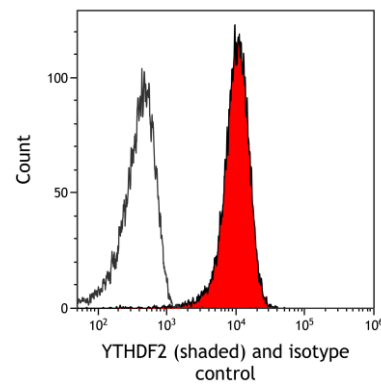
Purified		RefSeq ID	NP_057342.2
Catalog No.	A700-297-T	Uniprot ID	Q9Y5A9
Lot No.	1	GeneID	51441

APPLICATIONS	WB, Flow Cyt
SPECIES REACTIVITY	Human, Mouse
AMOUNT	20 µl (2 blots)
CONCENTRATION	500 µg/ml
STORAGE/SHELF LIFE	2 – 8°C / 1 year from date of receipt
PHYSICAL STATE	Liquid
BUFFER	Phosphate Buffered Saline (PBS) with 0.1% BSA and 0.09% Sodium Azide
ISOTYPE	IgG
CLONE #	BLR297M
ORIGIN	USA
PRODUCTION PROCEDURES	Recombinant antibody was purified from cell culture supernatant. Immunogen was a peptide representing a region between residue 300 and 350 of human YTH domain-containing family protein 2 using the numbering given in entry NP_057342.2 (Gene ID 51441).
APPLICATIONS	Centrifuge tube to remove product from lid. Optimal working dilutions should be determined experimentally by the investigator. Prepare working dilution immediately before use. Western Blot 1:1000 Flow Cytometry Fixed in 4% formaldehyde and permeabilized with 90% methanol. 1 µl per 1 x 10 ⁶ cells.
APPLICATION NOTES	All western blot analysis is performed using 5% Milk-TBST for blocking and as antibody diluent. Primary antibody is incubated overnight. Western blots of cell lysates are performed using Goat anti-Rabbit IgG Heavy and Light Chain Antibody (Cat. No. A120-101P).
ADDITIONAL INFO	https://www.fortislife.com/p/A700-297-T Use the link above to view SDS, a current list of citations, and other product specific information.

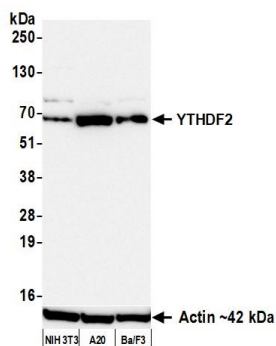
This document certifies that this product has met all of the quality control standards defined by Bethyl Laboratories, Inc.
Michael Spencer, PhD Date: December 26, 2023



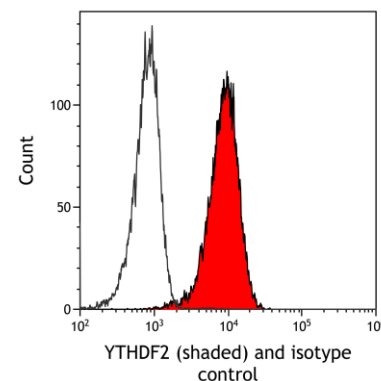
Detection of human YTHDF2 by western blot. *Samples:* Whole cell lysate (50 μ g) from CCRF-CEM, MOLT-4, K-562, Jurkat, and HEL 92.1.7 cells prepared using NETN lysis buffer. *Antibody:* Rabbit anti-YTHDF2 recombinant monoclonal antibody [BLR297M] (A700-297 lot 1) used at 1:1000. *Secondary:* HRP-conjugated goat anti-rabbit IgG (A120-101P). *Detection:* Chemiluminescence with an exposure time of 30 seconds. Lower Panel: Rabbit anti-Actin recombinant monoclonal antibody [BLR057F] (A700-057).



Detection of human YTHDF2 (shaded) in Jurkat cells by flow cytometry. *Antibody:* Rabbit anti-YTHDF2 recombinant monoclonal antibody [BLR297M] (A700-297) or isotype control (unshaded). *Secondary:* DyLight® 650-conjugated goat anti-rabbit IgG (A120-101D5).



Detection of mouse YTHDF2 by western blot. *Samples:* Whole cell lysate (25 μ g) from NIH 3T3, A20, and Ba/F3 cells prepared using NETN lysis buffer. *Antibody:* Rabbit anti-YTHDF2 recombinant monoclonal antibody [BLR297M] (A700-297 lot 1) used at 1:1000. *Secondary:* HRP-conjugated goat anti-rabbit IgG (A120-101P). *Detection:* Chemiluminescence with an exposure time of 10 seconds. Lower Panel: Rabbit anti-Actin recombinant monoclonal antibody [BLR057F] (A700-057).



Detection of mouse YTHDF2 (shaded) in NIH3T3 cells by flow cytometry. *Antibody:* Rabbit anti-YTHDF2 recombinant monoclonal antibody [BLR297M] (A700-297) or isotype control (unshaded). *Secondary:* DyLight® 650-conjugated goat anti-rabbit IgG (A120-101D5).