



SZABO SCANDIC

Part of Europa Biosite

Produktinformation



Forschungsprodukte & Biochemikalien



Zellkultur & Verbrauchsmaterial



Diagnostik & molekulare Diagnostik



Laborgeräte & Service

Weitere Information auf den folgenden Seiten!
See the following pages for more information!



Lieferung & Zahlungsart

siehe unsere [Liefer- und Versandbedingungen](#)

Zuschläge

- Mindermengenzuschlag
- Trockeneiszuschlag
- Gefahrgutzuschlag
- Expressversand

SZABO-SCANDIC HandelsgmbH

Quellenstraße 110, A-1100 Wien

T. +43(0)1 489 3961-0

F. +43(0)1 489 3961-7

mail@szabo-scandic.com

www.szabo-scandic.com

[linkedin.com/company/szaboscandic](https://www.linkedin.com/company/szaboscandic) 

Cytokeratin 8 Recombinant Monoclonal Antibody [BLR299M]

Rabbit Recombinant Monoclonal

Purified		RefSeq ID	NP_002264.1
Catalog No.	A700-299	Uniprot ID	P05787
Lot No.	1	GeneID	3856

APPLICATIONS	WB, IP, IHC, ICC, Flow Cyt
SPECIES REACTIVITY	Human
AMOUNT	100 µl (50+ tests)
CONCENTRATION	50 µg/ml
STORAGE/SHELF LIFE	2 – 8°C / 1 year from date of receipt
PHYSICAL STATE	Liquid
BUFFER	Phosphate Buffered Saline (PBS) with 0.1% BSA and 0.09% Sodium Azide
ISOTYPE	IgG
CLONE #	BLR299M
ORIGIN	USA
PRODUCTION PROCEDURES	Recombinant antibody was purified from cell culture supernatant.

Immunogen was a peptide representing a region between residue 433 and the C-terminus (residue 483) of human Cytoskeletal keratin 8, type II using the numbering given in entry NP_002264.1 (Gene ID 3856).

APPLICATIONS Centrifuge tube to remove product from lid. Optimal working dilutions should be determined experimentally by the investigator. Prepare working dilution immediately before use.

Western Blot	1:1000
Immunoprecipitation	20 µl/mg lysate
Immunohistochemistry	1:100 to 1:500. Epitope retrieval with citrate buffer pH 6.0 is recommended for FFPE tissue sections.
Immunocytochemistry	1:100 to 1:500. Epitope retrieval with citrate buffer pH 6.0 is recommended for FFPE cell sections.
Flow Cytometry	Fixed in 4% formaldehyde and permeabilized with 90% methanol. 0.5 µl per 1 x 10 ⁶ cells.

APPLICATION NOTES All western blot analysis is performed using 5% Milk-TBST for blocking and as antibody diluent. Primary antibody is incubated overnight.

Western blots of cell lysates are performed using Goat anti-Rabbit IgG Heavy and Light Chain Antibody (Cat. No. A120-101P).

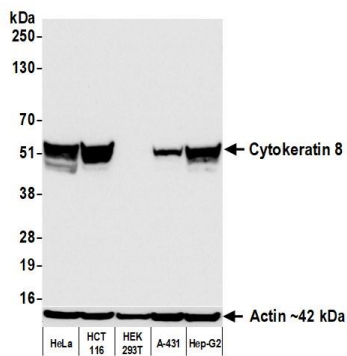
Western blots of immunoprecipitates are performed using Goat anti-Rabbit Light Chain HRP Conjugate (Cat. No. A120-113P) with 5% Normal Pig Serum (Cat. No. S100-020) added to the blocking buffer.

IHC HUMAN CONTROLS Breast Carcinoma, Colon, Colon Carcinoma, Gastric Carcinoma, Kidney, Ovarian Carcinoma, Placenta, Prostate Carcinoma, 22Rv1 Cells, DU145 Cells, HeLa Cells, MCF-7 Cells, OVCAR-3 Cells, T-47D Cells

ADDITIONAL INFO <https://www.fortislife.com/p/A700-299>

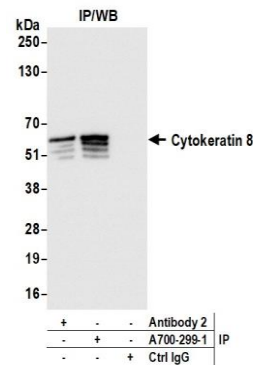
Use the link above to view SDS, a current list of citations, and other product specific information.

This document certifies that this product has met all of the quality control standards defined by Bethyl Laboratories, Inc.
Michael Spencer, PhD Date: December 26, 2023



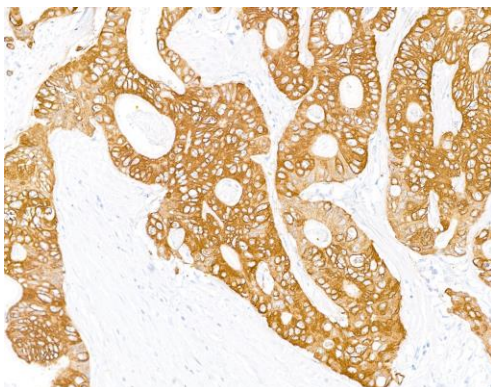
Detection of human Cytokeratin 8 by western blot.

Samples: Whole cell lysate (50 µg) from HeLa, HCT 116, HEK293T, A-431, and Hep-G2 cells prepared using NETN lysis buffer. *Antibody:* Rabbit anti-Cytokeratin 8 recombinant monoclonal antibody [BLR299M] (A700-299 lot 1) used at 1:1000. *Secondary:* HRP-conjugated goat anti-rabbit IgG (A120-101P). *Detection:* Chemiluminescence with an exposure time of 1 second. Lower Panel: Rabbit anti-Actin recombinant monoclonal antibody [BLR057F] (A700-057).



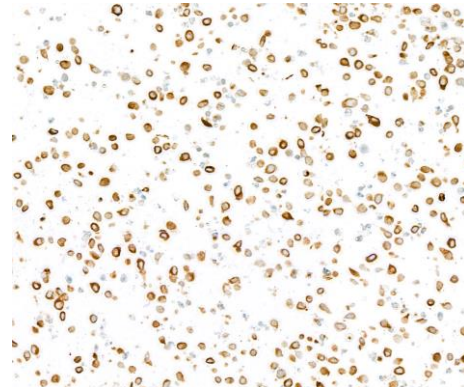
Detection of human Cytokeratin 8 by western blot of immunoprecipitates.

Samples: Whole cell lysate (1.0 mg per IP reaction; 20% of IP loaded) from HeLa cells prepared using NETN lysis buffer. *Antibodies:* Rabbit anti-Cytokeratin 8 recombinant monoclonal antibody [BLR299M] (A700-299 lot 1) used for IP at 20 µl/mg lysate. Cytokeratin 8 was also immunoprecipitated by a second antibody against a different epitope of Cytokeratin 8 (Antibody 2). For blotting immunoprecipitated Cytokeratin 8, A700-299 was used at 1:1000. *Detection:* Chemiluminescence with an exposure time of 1 second.



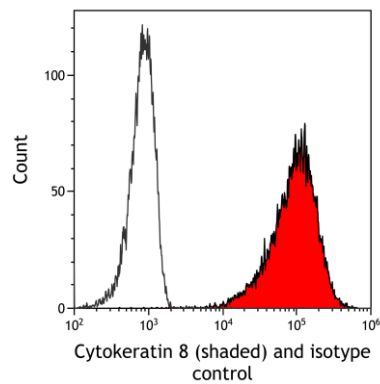
Detection of human Cytokeratin 8 by immunohistochemistry.

Sample: FFPE section of colon. *Antibody:* Rabbit anti-Cytokeratin 8 recombinant monoclonal antibody [BLR299M] (A700-299). *Secondary:* HRP-conjugated goat anti-rabbit IgG (A120-501P).



Detection of human Cytokeratin 8 by immunocytochemistry.

Sample: FFPE section of HeLa cells. *Antibody:* Rabbit anti-Cytokeratin 8 recombinant monoclonal antibody [BLR299M] (A700-299). *Secondary:* HRP-conjugated goat anti-rabbit IgG (A120-501P).



Detection of human cytokeratin 8 (shaded) in A549 cells by flow cytometry. *Antibody:* Rabbit anti-cytokeratin 8 recombinant monoclonal antibody [BLR299M] (A700-299) or isotype control (unshaded). *Secondary:* DyLight® 650-conjugated goat anti-rabbit IgG (A120-101D5).