



SZABO SCANDIC

Part of Europa Biosite

Produktinformation



Forschungsprodukte & Biochemikalien



Zellkultur & Verbrauchsmaterial



Diagnostik & molekulare Diagnostik



Laborgeräte & Service

Weitere Information auf den folgenden Seiten!
See the following pages for more information!



Lieferung & Zahlungsart

siehe unsere [Liefer- und Versandbedingungen](#)

Zuschläge

- Mindermengenzuschlag
- Trockeneiszuschlag
- Gefahrgutzuschlag
- Expressversand

SZABO-SCANDIC HandelsgmbH

Quellenstraße 110, A-1100 Wien

T. +43(0)1 489 3961-0

F. +43(0)1 489 3961-7

mail@szabo-scandic.com

www.szabo-scandic.com

[linkedin.com/company/szaboscandic](https://www.linkedin.com/company/szaboscandic) 

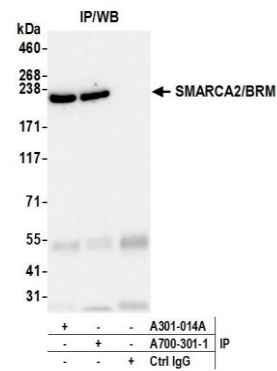
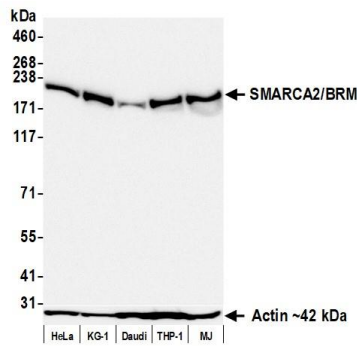
SMARCA2/BRM Recombinant Monoclonal Antibody [BLR301M]

Rabbit Recombinant Monoclonal

Purified		RefSeq ID	NP_003061.3
Catalog No.	A700-301-T	Uniprot ID	P51531
Lot No.	1	GeneID	6595

APPLICATIONS	WB, IP, Flow Cyt
SPECIES REACTIVITY	Human
AMOUNT	10 µl (5+ tests)
CONCENTRATION	250 µg/ml
STORAGE/SHELF LIFE	2 – 8°C / 1 year from date of receipt
PHYSICAL STATE	Liquid
BUFFER	Phosphate Buffered Saline (PBS) with 0.1% BSA and 0.09% Sodium Azide
ISOTYPE	IgG
CLONE #	BLR301M
ORIGIN	USA
PRODUCTION PROCEDURES	Recombinant antibody was purified from cell culture supernatant. Immunogen was a peptide representing a region between residue 1325 and 1375 of human SMARCA2/BRM using the numbering given in entry NP_003061.3 (Gene ID 6595).
APPLICATIONS	Centrifuge tube to remove product from lid. Optimal working dilutions should be determined experimentally by the investigator. Prepare working dilution immediately before use. Western Blot 1:1000 Immunoprecipitation 20 µl/mg lysate Flow Cytometry Fixed in 4% formaldehyde and permeabilized with 90% methanol. 1 µl per 1 × 10 ⁶ cells.
APPLICATION NOTES	All western blot analysis is performed using 5% Milk-TBST for blocking and as antibody diluent. Primary antibody is incubated overnight. Western blots of cell lysates are performed using Goat anti-Rabbit IgG Heavy and Light Chain Antibody (Cat. No. A120-101P). Western blots of immunoprecipitates are performed using Goat anti-Rabbit Light Chain HRP Conjugate (Cat. No. A120-113P) with 5% Normal Pig Serum (Cat. No. S100-020) added to the blocking buffer.
ADDITIONAL INFO	https://www.fortislife.com/p/A700-301-T Use the link above to view SDS, a current list of citations, and other product specific information.

This document certifies that this product has met all of the quality control standards defined by Bethyl Laboratories, Inc.
Michael Spencer, PhD Date: December 26, 2023

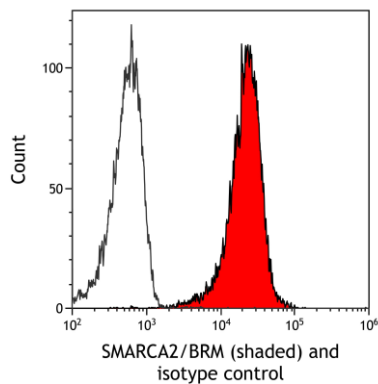


Detection of human SMARCA2/BRM by western blot.

Samples: Whole cell lysate (50 µg) from HeLa, KG-1, Daudi, THP-1, and MJ cells prepared using NETN lysis buffer. *Antibody:* Rabbit anti-SMARCA2/BRM recombinant monoclonal antibody [BLR301M] (A700-301 lot 1) used at 1:1000. *Secondary:* HRP-conjugated goat anti-rabbit IgG (A120-101P). *Detection:* Chemiluminescence with an exposure time of 10 seconds. Lower Panel: Rabbit anti-Actin recombinant monoclonal antibody [BLR057F] (A700-057).

Detection of human SMARCA2/BRM by western blot of immunoprecipitates.

Samples: Whole cell lysate (1.0 mg per IP reaction; 20% of IP loaded) from HeLa cells prepared using NETN lysis buffer. *Antibodies:* Rabbit anti-SMARCA2/BRM recombinant monoclonal antibody [BLR301M] (A700-301 lot 1) used for IP at 20 µl/mg lysate. SMARCA2/BRM was also immunoprecipitated by a second antibody against a different epitope of SMARCA2/BRM (A301-014A). For blotting immunoprecipitated SMARCA2/BRM, A700-301 was used at 1:1000. *Detection:* Chemiluminescence with an exposure time of 30 seconds.



Detection of human SMARCA2/BRM (shaded) in HeLa cells by flow cytometry.

Antibody: Rabbit anti-SMARCA2/BRM recombinant monoclonal antibody [BLR301M] (A700-301) or isotype control (unshaded). *Secondary:* DyLight® 650-conjugated goat anti-rabbit IgG (A120-101D5).