



SZABO SCANDIC

Part of Europa Biosite

Produktinformation



Forschungsprodukte & Biochemikalien



Zellkultur & Verbrauchsmaterial



Diagnostik & molekulare Diagnostik



Laborgeräte & Service

Weitere Information auf den folgenden Seiten!
See the following pages for more information!



Lieferung & Zahlungsart

siehe unsere [Liefer- und Versandbedingungen](#)

Zuschläge

- Mindermengenzuschlag
- Trockeneiszuschlag
- Gefahrgutzuschlag
- Expressversand

SZABO-SCANDIC HandelsgmbH

Quellenstraße 110, A-1100 Wien

T. +43(0)1 489 3961-0

F. +43(0)1 489 3961-7

mail@szabo-scandic.com

www.szabo-scandic.com

[linkedin.com/company/szaboscandic](https://www.linkedin.com/company/szaboscandic) 

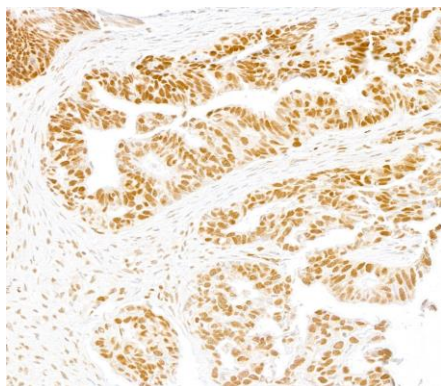
SMARCA2/BRM Recombinant Monoclonal Antibody [BLR302M]

Rabbit Recombinant Monoclonal

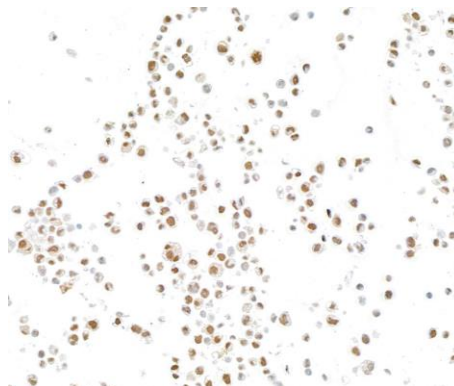
Purified		RefSeq ID	NP_003061.3
Catalog No.	A700-302	Uniprot ID	P51531
Lot No.	1	GeneID	6595

APPLICATIONS	IHC, ICC, Flow Cyt
SPECIES REACTIVITY	Human, Mouse
AMOUNT	100 µl (50+ tests)
CONCENTRATION	250 µg/ml
STORAGE/SHELF LIFE	2 – 8°C / 1 year from date of receipt
PHYSICAL STATE	Liquid
BUFFER	Phosphate Buffered Saline (PBS) with 0.1% BSA and 0.09% Sodium Azide
ISOTYPE	IgG
CLONE #	BLR302M
ORIGIN	USA
PRODUCTION PROCEDURES	Recombinant antibody was purified from cell culture supernatant. Immunogen was a peptide representing a region between residue 100 and 150 of human SMARCA2/BRM using the numbering given in entry NP_003061.3 (Gene ID 6595).
APPLICATIONS	Centrifuge tube to remove product from lid. Optimal working dilutions should be determined experimentally by the investigator. Prepare working dilution immediately before use. Immunohistochemistry 1:100 to 1:500. Epitope retrieval with citrate buffer pH 6.0 is recommended for FFPE tissue sections. Immunocytochemistry 1:100 to 1:500. Epitope retrieval with citrate buffer pH 6.0 is recommended for FFPE cell sections. Flow Cytometry Fixed in 4% formaldehyde and permeabilized with 90% methanol. 1 µl per 1 x 10 ⁶ cells.
IHC HUMAN CONTROLS	Breast Carcinoma, Ovarian Carcinoma, Prostate Carcinoma, Skin Carcinoma, Tonsil, A-431 Cells, Cal-27 Cells, KG-1 Cells, VLN3G2 Cells
IHC MOUSE CONTROLS	Kidney, Lung, Spleen, Testis, BW5147.3 Cells, J774A1 Cells, NIH 3T3 Cells
ADDITIONAL INFO	https://www.fortislifecom.com/p/A700-302 Use the link above to view SDS, a current list of citations, and other product specific information.

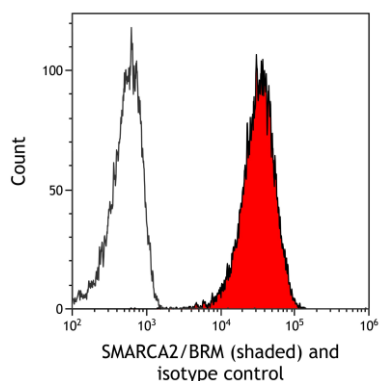
This document certifies that this product has met all of the quality control standards defined by Bethyl Laboratories, Inc.
Michael Spencer, PhD Date: December 21, 2023



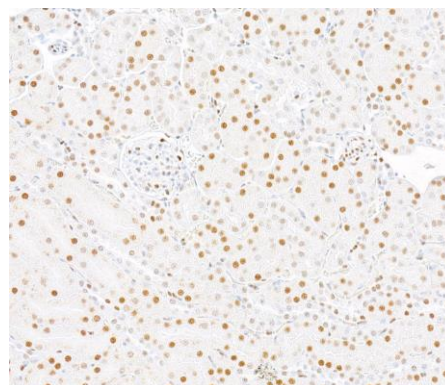
Detection of human SMARCA2/BRM by immunohistochemistry. *Sample:* FFPE section of ovarian carcinoma. *Antibody:* Rabbit anti-SMARCA/BRM recombinant monoclonal antibody [BLR302M] (A700-302). *Secondary:* HRP-conjugated goat anti-rabbit IgG (A120-501P).



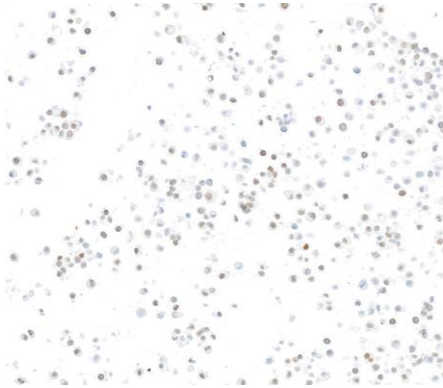
Detection of human SMARCA2/BRM by immunocytochemistry. *Sample:* FFPE section of VLN3G2 cells. *Antibody:* Rabbit anti-SMARCA/BRM recombinant monoclonal antibody [BLR302M] (A700-302). *Secondary:* HRP-conjugated goat anti-rabbit IgG (A120-501P).



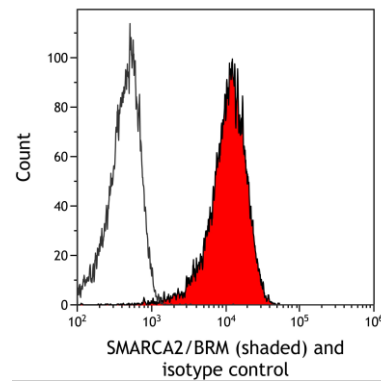
Detection of human SMARCA2/BRM (shaded) in HeLa cells by flow cytometry. *Antibody:* Rabbit anti-SMARCA2/BRM recombinant monoclonal antibody [BLR302M] (A700-302) or isotype control (unshaded). *Secondary:* DyLight® 650-conjugated goat anti-rabbit IgG (A120-101D5).



Detection of mouse SMARCA2/BRM by immunohistochemistry. *Sample:* FFPE section of kidney. *Antibody:* Rabbit anti-SMARCA/BRM recombinant monoclonal antibody [BLR302M] (A700-302). *Secondary:* HRP-conjugated goat anti-rabbit IgG (A120-501P).



Detection of mouse SMARCA2/BRM by immunocytochemistry. *Sample:* FFPE section of J774A.1 cells. *Antibody:* Rabbit anti-SMARCA/BRM recombinant monoclonal antibody [BLR302M] (A700-302). *Secondary:* HRP-conjugated goat anti-rabbit IgG (A120-501P).



Detection of mouse SMARCA2/BRM (shaded) in NIH3T3 cells by flow cytometry. *Antibody:* Rabbit anti-SMARCA2/BRM recombinant monoclonal antibody [BLR302M] (A700-302) or isotype control (unshaded). *Secondary:* DyLight® 650-conjugated goat anti-rabbit IgG (A120-101D5).