



# SZABO SCANDIC

Part of Europa Biosite

## Produktinformation



Forschungsprodukte & Biochemikalien



Zellkultur & Verbrauchsmaterial



Diagnostik & molekulare Diagnostik



Laborgeräte & Service

Weitere Information auf den folgenden Seiten!  
See the following pages for more information!



### Lieferung & Zahlungsart

siehe unsere [Liefer- und Versandbedingungen](#)

### Zuschläge

- Mindermengenzuschlag
- Trockeneiszuschlag
- Gefahrgutzuschlag
- Expressversand

### SZABO-SCANDIC HandelsgmbH

Quellenstraße 110, A-1100 Wien

T. +43(0)1 489 3961-0

F. +43(0)1 489 3961-7

[mail@szabo-scandic.com](mailto:mail@szabo-scandic.com)

[www.szabo-scandic.com](http://www.szabo-scandic.com)

[linkedin.com/company/szaboscandic](https://www.linkedin.com/company/szaboscandic) 

# 4-HNE Recombinant Monoclonal Antibody [BLR303M]

Rabbit Recombinant Monoclonal

Purified

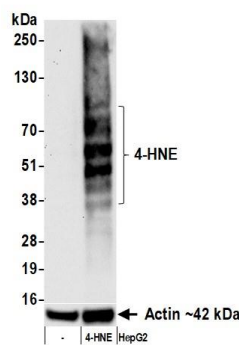
Catalog No. A700-303

Lot No. 1

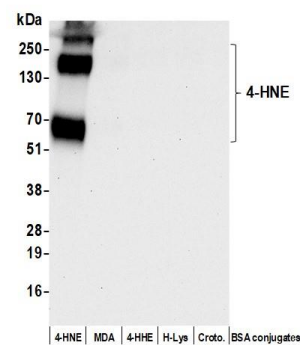
---

<b>APPLICATIONS</b>	WB
<b>AMOUNT</b>	100 µl (10 blots)
<b>CONCENTRATION</b>	1000 µg/ml
<b>STORAGE/SHELF LIFE</b>	2 - 8°C / 1 year from date of receipt
<b>PHYSICAL STATE</b>	Liquid
<b>BUFFER</b>	Phosphate Buffered Saline (PBS) with 0.09% Sodium Azide, BSA-Free
<b>ISOTYPE</b>	IgG
<b>CLONE #</b>	BLR303M
<b>ORIGIN</b>	USA
<b>PRODUCTION PROCEDURES</b>	Recombinant antibody was purified from cell culture supernatant. Immunogen was 4-HNE conjugated to Concholepas concholepas Hemocyanin.
<b>APPLICATIONS</b>	Centrifuge tube to remove product from lid. Optimal working dilutions should be determined experimentally by the investigator. Prepare working dilution immediately before use.  Western Blot                      1:1000
<b>APPLICATION NOTES</b>	All western blot analysis is performed using 5% Milk-TBST for blocking and as antibody diluent. Primary antibody is incubated overnight.  Western blots of cell lysates are performed using Goat anti-Rabbit IgG Heavy and Light Chain Antibody (Cat. No. A120-101P).
<b>ADDITIONAL INFO</b>	<a href="https://www.fortislife.com/p/A700-303">https://www.fortislife.com/p/A700-303</a> Use the link above to view SDS, a current list of citations, and other product specific information.

This document certifies that this product has met all of the quality control standards defined by Bethyl Laboratories, Inc.  
Michael Spencer, PhD Date: December 21, 2023



**Detection of 4-HNE by western blot.** *Samples:* Whole cell lysate (50  $\mu$ g) from Hep-G2 cells untreated (-) or treated with 100 $\mu$ M 4-HNE for 1 hr. *Antibody:* Rabbit anti-4-HNE recombinant monoclonal antibody [BLR303M] (A700-303 lot 1) used at 1:1000. *Secondary:* HRP-conjugated goat anti-rabbit IgG (A120-101P). *Detection:* Chemiluminescence with an exposure time of 30 seconds. Lower Panel: Rabbit anti-Actin recombinant monoclonal antibody [BLR057F] (A700-057).



**Detection of 4-HNE by western blot.** *Samples:* 1  $\mu$ g BSA conjugated to 4-HNE, Malondialdehyde (MDA), 4-Hydroxy-2-hexenal (4-HHE), Hexanoyl Lysine (H-Lys), and Crotonaldehyde (Croto). *Antibody:* Rabbit anti-4-HNE recombinant monoclonal antibody [BLR303M] (A700-303 lot 1) used at 1:1000. *Secondary:* HRP-conjugated goat anti-rabbit IgG (A120-101P). *Detection:* Chemiluminescence with an exposure time of 10 seconds.