



SZABO SCANDIC

Part of Europa Biosite

Produktinformation



Forschungsprodukte & Biochemikalien



Zellkultur & Verbrauchsmaterial



Diagnostik & molekulare Diagnostik



Laborgeräte & Service

Weitere Information auf den folgenden Seiten!
See the following pages for more information!



Lieferung & Zahlungsart

siehe unsere [Liefer- und Versandbedingungen](#)

Zuschläge

- Mindermengenzuschlag
- Trockeneiszuschlag
- Gefahrgutzuschlag
- Expressversand

SZABO-SCANDIC HandelsgmbH

Quellenstraße 110, A-1100 Wien

T. +43(0)1 489 3961-0

F. +43(0)1 489 3961-7

mail@szabo-scandic.com

www.szabo-scandic.com

[linkedin.com/company/szaboscandic](https://www.linkedin.com/company/szaboscandic) 

FITC Recombinant Monoclonal Antibody [BLR304M]

Rabbit Recombinant Monoclonal

Purified

Catalog No. A700-304

Lot No. 1

| | |
|------------------------------|--|
| APPLICATIONS | WB, IP, IHC, ICC |
| AMOUNT | 100 µl (50+ tests) |
| CONCENTRATION | 250 µg/ml |
| STORAGE/SHELF LIFE | 2 – 8°C / 1 year from date of receipt |
| PHYSICAL STATE | Liquid |
| BUFFER | Phosphate Buffered Saline (PBS) with 0.1% BSA and 0.09% Sodium Azide |
| ISOTYPE | IgG |
| CLONE # | BLR304M |
| ORIGIN | USA |
| PRODUCTION PROCEDURES | Recombinant antibody was purified from cell culture supernatant. |

Immunogen was Fluorescein isothiocyanate (FITC)-conjugated Keyhole Limpet Hemocyanin (KLH).

APPLICATIONS Centrifuge tube to remove product from lid. Optimal working dilutions should be determined experimentally by the investigator. Prepare working dilution immediately before use.

| | |
|----------------------|---|
| Western Blot | 1:1000 |
| Immunoprecipitation | 20 µl/mg lysate |
| Immunohistochemistry | 1:100 to 1:500. Epitope retrieval with citrate buffer pH 6.0 is recommended for FFPE tissue sections. |
| Immunocytochemistry | 1:100 to 1:500. Epitope retrieval with citrate buffer pH 6.0 is recommended for FFPE cell sections. |

APPLICATION NOTES All western blot analysis is performed using 5% Milk-TBST for blocking and as antibody diluent. Primary antibody is incubated overnight.

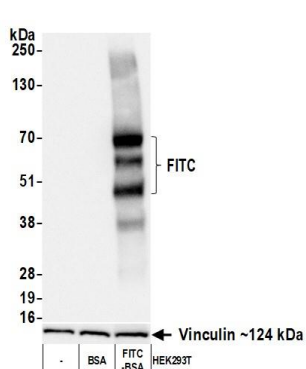
Western blots of cell lysates are performed using Goat anti-Rabbit IgG Heavy and Light Chain Antibody (Cat. No. A120-101P).

Western blots of immunoprecipitates are performed using Goat anti-Rabbit Light Chain HRP Conjugate (Cat. No. A120-113P) with 5% Normal Pig Serum (Cat. No. S100-020) added to the blocking buffer.

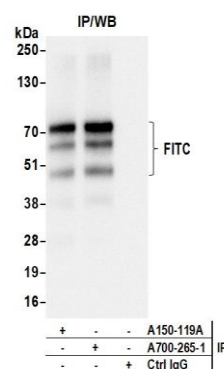
ADDITIONAL INFO <https://www.fortislifesciences.com/p/A700-304>

Use the link above to view SDS, a current list of citations, and other product specific information.

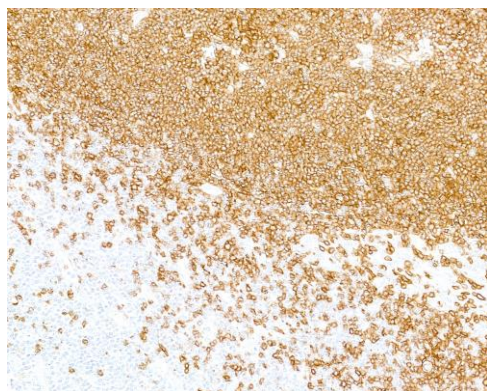
This document certifies that this product has met all of the quality control standards defined by Bethyl Laboratories, Inc.
Michael Spencer, PhD Date: December 26, 2023



Detection of FITC by western blot. *Samples:* Whole cell lysate (25 µg) from HEK293T cells (-), HEK293T + BSA and HEK293T + FITC conjugated BSA. *Antibody:* Rabbit anti-FITC recombinant monoclonal antibody [BLR304M] (A700-304 lot 1) used at 1:1000. *Secondary:* HRP-conjugated goat anti-rabbit IgG (A120-101P). *Detection:* Chemiluminescence with an exposure time of 1 second. Lower Panel: Rabbit anti-Vinculin antibody (A302-535A).



Detection of FITC by western blot of immunoprecipitates. *Samples:* Whole cell lysate (1.0 mg per IP reaction; 20% of IP loaded) from 293T cells with FITC conjugated BSA. *Antibodies:* Rabbit anti-FITC recombinant monoclonal antibody [BLR304M] (A700-304 lot 1) used for IP at 20 µl/mg lysate. FITC was also immunoprecipitated by a second antibody against FITC (A150-119A). For blotting immunoprecipitated FITC, A700-304 was used at 1:1000. *Detection:* Chemiluminescence with an exposure time of 1 second.



Detection of FITC by immunohistochemistry. *Sample:* FFPE section of tonsil. *Antibody:* Rabbit anti-FITC recombinant monoclonal antibody [BLR304M] (A700-304). *Primary:* FITC-conjugated mouse anti-CD20 monoclonal antibody (A500-017A). *Tertiary:* HRP-conjugated goat anti-rabbit IgG (A120-501P)



Detection of FITC by immunocytochemistry. *Sample:* FFPE section of Raji cells. *Antibody:* Rabbit anti-FITC recombinant monoclonal antibody [BLR304M] (A700-304). *Primary:* FITC-conjugated mouse anti-CD20 monoclonal antibody (A500-017A). *Tertiary:* HRP-conjugated goat anti-rabbit IgG (A120-501P)