



SZABO SCANDIC

Part of Europa Biosite

Produktinformation



Forschungsprodukte & Biochemikalien



Zellkultur & Verbrauchsmaterial



Diagnostik & molekulare Diagnostik



Laborgeräte & Service

Weitere Information auf den folgenden Seiten!
See the following pages for more information!



Lieferung & Zahlungsart

siehe unsere [Liefer- und Versandbedingungen](#)

Zuschläge

- Mindermengenzuschlag
- Trockeneiszuschlag
- Gefahrgutzuschlag
- Expressversand

SZABO-SCANDIC HandelsgmbH

Quellenstraße 110, A-1100 Wien

T. +43(0)1 489 3961-0

F. +43(0)1 489 3961-7

mail@szabo-scandic.com

www.szabo-scandic.com

[linkedin.com/company/szaboscandic](https://www.linkedin.com/company/szaboscandic) 

SMARCB1 /SNF5 Recombinant Monoclonal Antibody [BLR305M]

Rabbit Recombinant Monoclonal

Purified		RefSeq ID	NP_003064.2
Catalog No.	A700-305	Uniprot ID	Q12824
Lot No.	1	GeneID	6598

APPLICATIONS	WB, IP, Flow Cyt
SPECIES REACTIVITY	Human, Mouse
AMOUNT	100 µl (10 blots)
CONCENTRATION	1000 µg/ml
STORAGE/SHELF LIFE	2 – 8°C / 1 year from date of receipt
PHYSICAL STATE	Liquid
BUFFER	Phosphate Buffered Saline (PBS) with 0.09% Sodium Azide, BSA-Free
ISOTYPE	IgG
CLONE #	BLR305M
ORIGIN	USA
PRODUCTION PROCEDURES	Recombinant antibody was purified from cell culture supernatant.

Immunogen was a peptide representing a region between residue 100 and 150 of human SMARCB1/SNF5 using the numbering given in entry NP_003064.2 (Gene ID 6598).

APPLICATIONS Centrifuge tube to remove product from lid. Optimal working dilutions should be determined experimentally by the investigator. Prepare working dilution immediately before use.

Western Blot	1:1000
Immunoprecipitation	6 µl/mg lysate
Flow Cytometry	Fixed in 4% formaldehyde and permeabilized with 90% methanol. 0.5 µl per 1 x 10 ⁶ cells.

APPLICATION NOTES All western blot analysis is performed using 5% Milk-TBST for blocking and as antibody diluent. Primary antibody is incubated overnight.

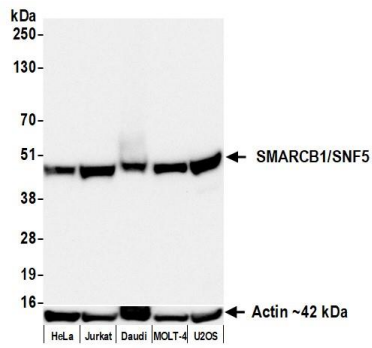
Western blots of cell lysates are performed using Goat anti-Rabbit IgG Heavy and Light Chain Antibody (Cat. No. A120-101P).

Western blots of immunoprecipitates are performed using Goat anti-Rabbit Light Chain HRP Conjugate (Cat. No. A120-113P) with 5% Normal Pig Serum (Cat. No. S100-020) added to the blocking buffer.

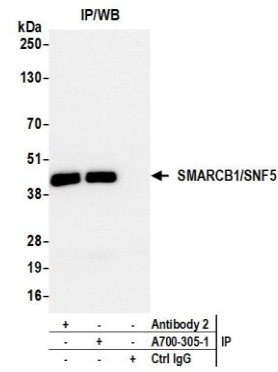
ADDITIONAL INFO <https://www.fortislife.com/p/A700-305>

Use the link above to view SDS, a current list of citations, and other product specific information.

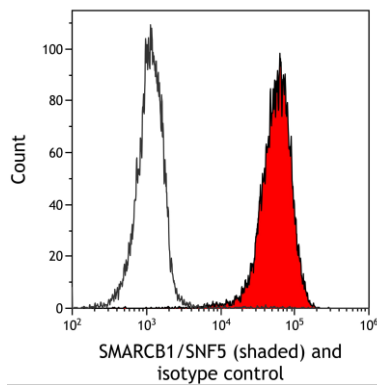
This document certifies that this product has met all of the quality control standards defined by Bethyl Laboratories, Inc.
Michael Spencer, PhD Date: December 26, 2023



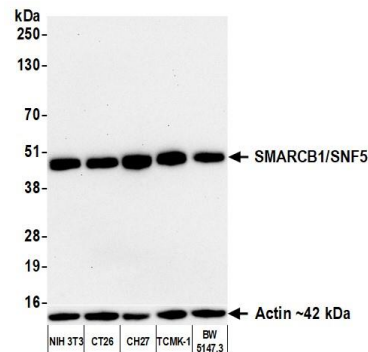
Detection of human SMARCB1 /SNF5 by western blot.
Samples: Whole cell lysate (50 µg) from HeLa, Jurkat, Daudi, MOLT-4, and U2OS cells prepared using NETN lysis buffer. *Antibody:* Rabbit anti-SMARCB1/SNF5 recombinant monoclonal antibody [BLR305M] (A700-305 lot 1) used at 1:1000. *Secondary:* HRP-conjugated goat anti-rabbit IgG (A120-101P). *Detection:* Chemiluminescence with an exposure time of 10 seconds. Lower Panel: Rabbit anti-Actin recombinant monoclonal antibody [BLR057F] (A700-057).



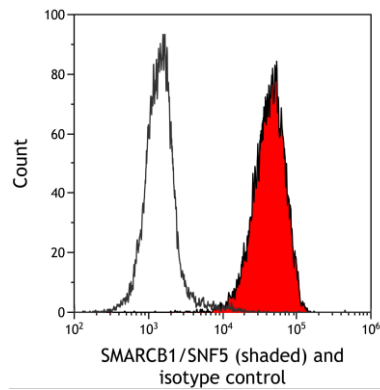
Detection of human SMARCB1 /SNF5 by western blot of immunoprecipitates. *Samples:* Whole cell lysate (1.0 mg per IP reaction; 20% of IP loaded) from Jurkat cells prepared using NETN lysis buffer. *Antibodies:* Rabbit anti-SMARCB1/SNF5 recombinant monoclonal antibody [BLR305M] (A700-305 lot 1) used for IP at 6 µl/mg lysate. SMARCB1/SNF5 was also immunoprecipitated by a second antibody against a different epitope of SMARCB1/SNF5 (Antibody 2). For blotting immunoprecipitated SMARCB1/SNF5, A700-305 was used at 1:1000. *Detection:* Chemiluminescence with an exposure time of 10 seconds.



Detection of human SMARCB1/SNF5 (shaded) in U2OS cells by flow cytometry. *Antibody:* Rabbit anti-SMARCB1/SNF5 recombinant monoclonal antibody [BLR305M] (A700-305) or isotype control (unshaded). *Secondary:* DyLight® 650-conjugated goat anti-rabbit IgG (A120-101D5).



Detection of mouse SMARCB1/SNF5 by western blot. *Samples:* Whole cell lysate (10 µg) from NIH 3T3, CT26, CH27, TCMK-1, and BW5147.3 cells prepared using NETN lysis buffer. *Antibody:* Rabbit anti-SMARCB1/SNF5 recombinant monoclonal antibody [BLR305M] (A700-305 lot 1) used at 1:1000. *Secondary:* HRP-conjugated goat anti-rabbit IgG (A120-101P). *Detection:* Chemiluminescence with an exposure time of 75 seconds. Lower Panel: Rabbit anti-Actin recombinant monoclonal antibody [BLR057F] (A700-057).



Detection of mouse SMARCB1/SNF5 (shaded) in EL4 cells by flow cytometry. *Antibody:* Rabbit anti-SMARCB1/SNF5 recombinant monoclonal antibody [BLR305M] (A700-305) or isotype control (unshaded). *Secondary:* DyLight® 650-conjugated goat anti-rabbit IgG (A120-101D5).