



# SZABO SCANDIC

Part of Europa Biosite

## Produktinformation



Forschungsprodukte & Biochemikalien



Zellkultur & Verbrauchsmaterial



Diagnostik & molekulare Diagnostik



Laborgeräte & Service

Weitere Information auf den folgenden Seiten!  
See the following pages for more information!



### Lieferung & Zahlungsart

siehe unsere [Liefer- und Versandbedingungen](#)

### Zuschläge

- Mindermengenzuschlag
- Trockeneiszuschlag
- Gefahrgutzuschlag
- Expressversand

### SZABO-SCANDIC HandelsgmbH

Quellenstraße 110, A-1100 Wien

T. +43(0)1 489 3961-0

F. +43(0)1 489 3961-7

[mail@szabo-scandic.com](mailto:mail@szabo-scandic.com)

[www.szabo-scandic.com](http://www.szabo-scandic.com)

[linkedin.com/company/szaboscandic](https://www.linkedin.com/company/szaboscandic) 

# Biotin Recombinant Monoclonal Antibody [BLR315M]

Rabbit Recombinant Monoclonal

Purified

Catalog No. A700-315

Lot No. 1

---

<b>APPLICATIONS</b>	WB, IP, IHC, ICC
<b>AMOUNT</b>	100 µl (50+ tests)
<b>CONCENTRATION</b>	250 µg/ml
<b>STORAGE/SHELF LIFE</b>	2 – 8°C / 1 year from date of receipt
<b>PHYSICAL STATE</b>	Liquid
<b>BUFFER</b>	Phosphate Buffered Saline (PBS) with 0.1% BSA and 0.09% Sodium Azide
<b>ISOTYPE</b>	IgG
<b>CLONE #</b>	BLR315M
<b>ORIGIN</b>	USA
<b>PRODUCTION PROCEDURES</b>	Recombinant antibody was purified from cell culture supernatant. Immunogen was biotin conjugated to KLH.

**APPLICATIONS** Centrifuge tube to remove product from lid. Optimal working dilutions should be determined experimentally by the investigator. Prepare working dilution immediately before use.

Western Blot	1:1000
Immunoprecipitation	20 µl/mg lysate
Immunohistochemistry	1:100 to 1:500. Epitope retrieval with citrate buffer pH 6.0 is recommended for FFPE tissue sections.
Immunocytochemistry	1:100 to 1:500. Epitope retrieval with citrate buffer pH 6.0 is recommended for FFPE cell sections.

**APPLICATION NOTES** All western blot analysis is performed using 5% Milk-TBST for blocking and as antibody diluent. Primary antibody is incubated overnight.

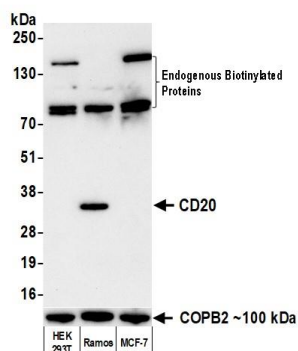
Western blots of cell lysates are performed using Goat anti-Rabbit IgG Heavy and Light Chain Antibody (Cat. No. A120-101P).

Western blots of immunoprecipitates are performed using Goat anti-Rabbit Light Chain HRP Conjugate (Cat. No. A120-113P) with 5% Normal Pig Serum (Cat. No. S100-020) added to the blocking buffer.

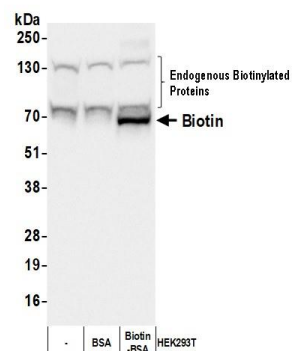
**ADDITIONAL INFO** <https://www.fortislife.com/p/A700-315>

Use the link above to view SDS, a current list of citations, and other product specific information.

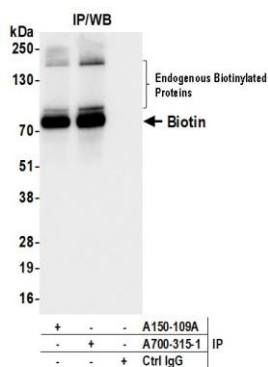
This document certifies that this product has met all of the quality control standards defined by Bethyl Laboratories, Inc.  
Michael Spencer, PhD Date: March 27, 2024



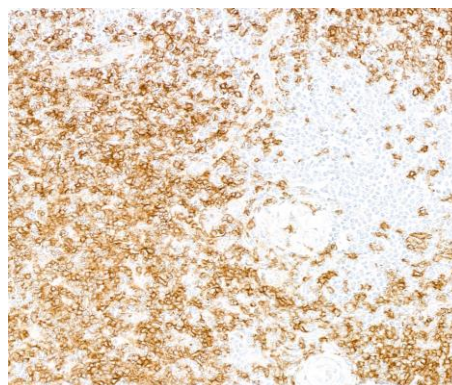
**Detection of biotinylated anti-CD20 antibody by western blot.** *Samples:* Whole cell lysate (10 µg) from HEK293T, Ramos, and MCF-7 cells prepared using NETN lysis buffer. *Primary:* Biotinylated mouse anti-CD20 monoclonal antibody (A500-017A) used at 1:1000. *Secondary:* Rabbit anti-Biotin recombinant monoclonal antibody [BLR315M] (A700-315 lot 1) used at 1:1000. *Tertiary:* HRP-conjugated goat anti-rabbit IgG (A120-101P). *Detection:* Chemiluminescence with an exposure time of 30 seconds. Lower Panel: Rabbit anti-COPB2 antibody (A304-523A).



**Detection of Biotin by western blot.** *Samples:* Whole cell lysate (50 µg) from HEK293T cells with or without BSA (0.01 µg) or Biotin-BSA (0.01 µg) added. *Antibody:* Rabbit anti-Biotin recombinant monoclonal antibody [BLR315M] (A700-315 lot 1) used at 1:1000. *Secondary:* HRP-conjugated goat anti-rabbit IgG (A120-101P). *Detection:* Chemiluminescence with an exposure time of 3 seconds.



**Detection of Biotin by western blot of immunoprecipitates.** *Samples:* Whole cell lysate (1.0 mg per IP reaction; 20% of IP loaded) from 293T cells + Biotin conjugated to BSA. *Antibodies:* Rabbit anti-Biotin recombinant monoclonal antibody [BLR315M] (A700-315 lot 1) used for IP at 20 µl/mg lysate. Biotin was also immunoprecipitated by a second antibody against Biotin (A150-109A). For blotting immunoprecipitated Biotin, A700-315 was used at 1:1000. *Detection:* Chemiluminescence with an exposure time of 1 second.



**Detection of Biotin by immunohistochemistry.** *Sample:* FFPE section of tonsil. *Antibody:* Rabbit anti-Biotin recombinant monoclonal antibody [BLR315M] (A700-315). *Primary:* Biotin conjugated mouse anti-CD20 monoclonal antibody (A500-017A). *Tertiary:* HRP-conjugated goat anti-rabbit IgG (A120-501P).



**Detection of Biotin by immunocytochemistry.** *Sample:* FFPE section of Raji cells. *Antibody:* Rabbit anti-Biotin recombinant monoclonal antibody [BLR315M] (A700-315). *Primary:* Biotin conjugated mouse anti-CD20 monoclonal antibody (A500-017A). *Tertiary:* HRP-conjugated goat anti-rabbit IgG (A120-501P).