



SZABO SCANDIC

Part of Europa Biosite

Produktinformation



Forschungsprodukte & Biochemikalien



Zellkultur & Verbrauchsmaterial



Diagnostik & molekulare Diagnostik



Laborgeräte & Service

Weitere Information auf den folgenden Seiten!
See the following pages for more information!



Lieferung & Zahlungsart

siehe unsere [Liefer- und Versandbedingungen](#)

Zuschläge

- Mindermengenzuschlag
- Trockeneiszuschlag
- Gefahrgutzuschlag
- Expressversand

SZABO-SCANDIC HandelsgmbH

Quellenstraße 110, A-1100 Wien

T. +43(0)1 489 3961-0

F. +43(0)1 489 3961-7

mail@szabo-scandic.com

www.szabo-scandic.com

[linkedin.com/company/szaboscandic](https://www.linkedin.com/company/szaboscandic) 

BRCA1 Recombinant Monoclonal Antibody [BLR319M]

Rabbit Recombinant Monoclonal

Purified		RefSeq ID	NP_033894.3
Catalog No.	A700-319	Uniprot ID	P48754
Lot No.	1	GeneID	12189

APPLICATIONS	WB, IP, Flow Cyt
SPECIES REACTIVITY	Mouse
AMOUNT	100 µl (10 blots)
CONCENTRATION	1000 µg/ml
STORAGE/SHELF LIFE	2 – 8°C / 1 year from date of receipt
PHYSICAL STATE	Liquid
BUFFER	Phosphate Buffered Saline (PBS) with 0.09% Sodium Azide, BSA-Free
ISOTYPE	IgG
CLONE #	BLR319M
ORIGIN	USA
PRODUCTION PROCEDURES	Recombinant antibody was purified from cell culture supernatant.

Immunogen was a peptide representing a region between residue 500 and 550 of mouse Breast cancer type 1 susceptibility protein (aka BRCA1) using the numbering given in entry NP_033894.3 (Gene ID 12189).

APPLICATIONS Centrifuge tube to remove product from lid. Optimal working dilutions should be determined experimentally by the investigator. Prepare working dilution immediately before use.

Western Blot	1:1000
Immunoprecipitation	6 µl/mg lysate
Flow Cytometry	Fixed in 4% formaldehyde and permeabilized with 90% methanol. 0.05 µl per 1 x 10 ⁶ cells.

APPLICATION NOTES All western blot analysis is performed using 5% Milk-TBST for blocking and as antibody diluent. Primary antibody is incubated overnight.

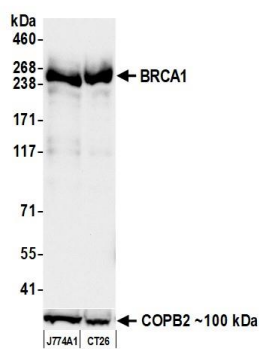
Western blots of cell lysates are performed using Goat anti-Rabbit IgG Heavy and Light Chain Antibody (Cat. No. A120-101P).

Western blots of immunoprecipitates are performed using Goat anti-Rabbit Light Chain HRP Conjugate (Cat. No. A120-113P) with 5% Normal Pig Serum (Cat. No. S100-020) added to the blocking buffer.

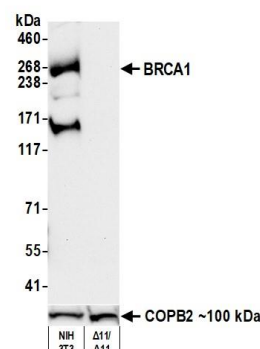
ADDITIONAL INFO <https://www.fortislife.com/p/A700-319>

Use the link above to view SDS, a current list of citations, and other product specific information.

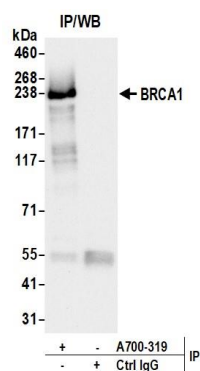
This document certifies that this product has met all of the quality control standards defined by Bethyl Laboratories, Inc.
Michael Spencer, PhD Date: April 1, 2024



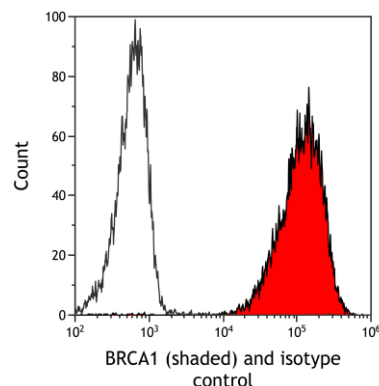
Detection of mouse BRCA1 by western blot. *Samples:* Whole cell lysate (50 μ g) from J774A1 and CT26 cells prepared using NETN lysis buffer. *Antibody:* Rabbit anti-BRCA1 recombinant monoclonal antibody [BLR319M] (A700-319 lot 1) used at 1:1000. *Secondary:* HRP-conjugated goat anti-rabbit IgG (A120-101P). *Detection:* Chemiluminescence with an exposure time of 30 seconds. Lower Panel: Rabbit anti-COPB2 antibody (A304-523A).



Detection of mouse BRCA1 by western blot. *Samples:* Whole cell lysate (50 μ g) from mouse fibroblast BRCA1 delta11/delta11(S12) and NIH 3T3 cells prepared using NETN lysis buffer. *Antibody:* Rabbit anti-BRCA1 recombinant monoclonal antibody [BLR319M] (A700-319 lot 1) used at 1:1000. *Secondary:* HRP-conjugated goat anti-rabbit IgG (A120-101P). *Detection:* Chemiluminescence with an exposure time of 30 seconds. Lower Panel: Rabbit anti-COPB2 antibody (A304-523A).



Detection of mouse BRCA1 by western blot of immunoprecipitates. *Samples:* Whole cell lysate (1.0 mg per IP reaction; 20% of IP loaded) from J774A1 cells prepared using NETN lysis buffer. *Antibody:* Rabbit anti-BRCA1 recombinant monoclonal antibody [BLR319M] (A700-319 lot 1) used at 6 μ l per reaction. For blotting immunoprecipitated BRCA1, A700-319 was used at 1:1000. *Detection:* Chemiluminescence with an exposure time of 30 seconds.



Detection of mouse BRCA1 (shaded) in NIH3T3 cells by flow cytometry. *Antibody:* Rabbit anti-BRCA1 recombinant monoclonal antibody [BLR319M] (A700-319) or isotype control (unshaded). *Secondary:* DyLight[®] 650-conjugated goat anti-rabbit IgG (A120-101D5).