



# SZABO SCANDIC

Part of Europa Biosite

## Produktinformation



Forschungsprodukte & Biochemikalien



Zellkultur & Verbrauchsmaterial



Diagnostik & molekulare Diagnostik



Laborgeräte & Service

Weitere Information auf den folgenden Seiten!  
See the following pages for more information!



### Lieferung & Zahlungsart

siehe unsere [Liefer- und Versandbedingungen](#)

### Zuschläge

- Mindermengenzuschlag
- Trockeneiszuschlag
- Gefahrgutzuschlag
- Expressversand

### SZABO-SCANDIC HandelsgmbH

Quellenstraße 110, A-1100 Wien

T. +43(0)1 489 3961-0

F. +43(0)1 489 3961-7

[mail@szabo-scandic.com](mailto:mail@szabo-scandic.com)

[www.szabo-scandic.com](http://www.szabo-scandic.com)

[linkedin.com/company/szaboscandic](https://www.linkedin.com/company/szaboscandic) 

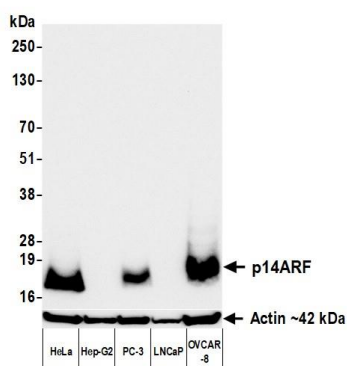
# p14ARF Recombinant Monoclonal Antibody [BLR325M]

## Rabbit Recombinant Monoclonal

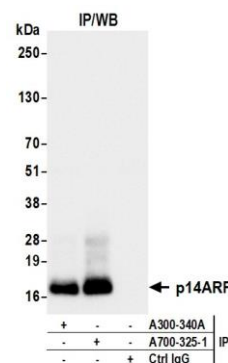
Purified		RefSeq ID	NP_478102.2
Catalog No.	A700-325-T	Uniprot ID	Q8N726
Lot No.	1	GeneID	1029

<b>APPLICATIONS</b>	WB, IP, IHC, ICC, Flow Cyt										
<b>SPECIES REACTIVITY</b>	Human										
<b>AMOUNT</b>	10 µl (5+ tests)										
<b>CONCENTRATION</b>	100 µg/ml										
<b>STORAGE/SHELF LIFE</b>	2 – 8°C / 1 year from date of receipt										
<b>PHYSICAL STATE</b>	Liquid										
<b>BUFFER</b>	Phosphate Buffered Saline (PBS) with 0.1% BSA and 0.09% Sodium Azide										
<b>ISOTYPE</b>	IgG										
<b>CLONE #</b>	BLR325M										
<b>ORIGIN</b>	USA										
<b>PRODUCTION PROCEDURES</b>	<p>Recombinant antibody was purified from cell culture supernatant.</p> <p>Immunogen was a peptide representing a region between residue 100 and 150 of human Cyclin-dependent kinase inhibitor 2A isoform p14ARF using the numbering given in entry NP_478102.2 (Gene</p>										
<b>APPLICATIONS</b>	<p>Centrifuge tube to remove product from lid. Optimal working dilutions should be determined experimentally by the investigator. Prepare working dilution immediately before use.</p> <table><tr><td>Western Blot</td><td>1:1,000</td></tr><tr><td>Immunoprecipitation</td><td>20 µl/mg lysate</td></tr><tr><td>Immunohistochemistry</td><td>1:100 to 1:500. Epitope retrieval with citrate buffer pH 6.0 is recommended for FFPE tissue sections.</td></tr><tr><td>Immunocytochemistry</td><td>1:100 to 1:500. Epitope retrieval with citrate buffer pH 6.0 is recommended for FFPE cell sections.</td></tr><tr><td>Flow Cytometry</td><td>Fixed in 4% formaldehyde and permeabilized with 90% methanol. 1 µl per 1 x 10<sup>6</sup> cells.</td></tr></table>	Western Blot	1:1,000	Immunoprecipitation	20 µl/mg lysate	Immunohistochemistry	1:100 to 1:500. Epitope retrieval with citrate buffer pH 6.0 is recommended for FFPE tissue sections.	Immunocytochemistry	1:100 to 1:500. Epitope retrieval with citrate buffer pH 6.0 is recommended for FFPE cell sections.	Flow Cytometry	Fixed in 4% formaldehyde and permeabilized with 90% methanol. 1 µl per 1 x 10 <sup>6</sup> cells.
Western Blot	1:1,000										
Immunoprecipitation	20 µl/mg lysate										
Immunohistochemistry	1:100 to 1:500. Epitope retrieval with citrate buffer pH 6.0 is recommended for FFPE tissue sections.										
Immunocytochemistry	1:100 to 1:500. Epitope retrieval with citrate buffer pH 6.0 is recommended for FFPE cell sections.										
Flow Cytometry	Fixed in 4% formaldehyde and permeabilized with 90% methanol. 1 µl per 1 x 10 <sup>6</sup> cells.										
<b>APPLICATION NOTES</b>	<p>All western blot analysis is performed using 5% Milk-TBST for blocking and as antibody diluent. Primary antibody is incubated overnight.</p> <p>Western blots of cell lysates are performed using Goat anti-Rabbit IgG Heavy and Light Chain Antibody (A120-101P).</p> <p>Western blots of immunoprecipitates are performed using Goat anti-Rabbit Light Chain HRP Conjugate (A120-113P) with 5% Normal Pig Serum (S100-020) added to the blocking buffer.</p>										
<b>ADDITIONAL INFO</b>	<p><a href="https://www.fortislifesciences.com/p/A700-325-T">https://www.fortislifesciences.com/p/A700-325-T</a></p> <p>Use the link above to view SDS, a current list of citations, and other product specific information.</p>										

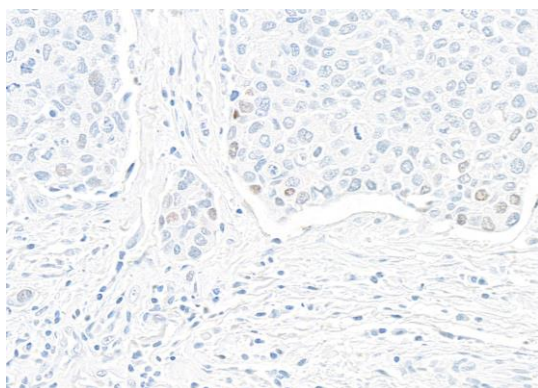
This document certifies that this product has met all of the quality control standards defined by Bethyl Laboratories, Inc.  
Michael Spencer, PhD Date: June 25, 2024



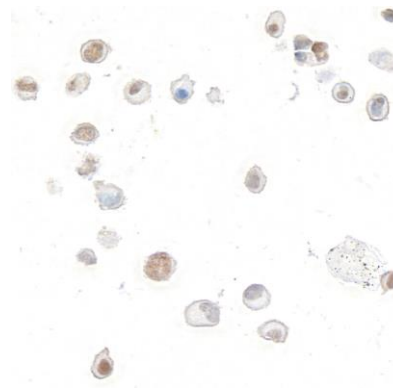
**Detection of human p14ARF by western blot.** *Samples:* Whole cell lysate (50 µg) from HeLa, Hep-G2, PC-3, LNCaP, and OVCAR-8 cells prepared using NETN lysis buffer. *Antibody:* Rabbit anti-p14ARF recombinant monoclonal antibody [BLR325M] (A700-325 lot 1) used at 1:1000. *Secondary:* HRP-conjugated goat anti-rabbit IgG (A120-101P). *Detection:* Chemiluminescence with an exposure time of 3 seconds. Lower Panel: Rabbit anti-Actin recombinant monoclonal antibody [BLR057F] (A700-057).



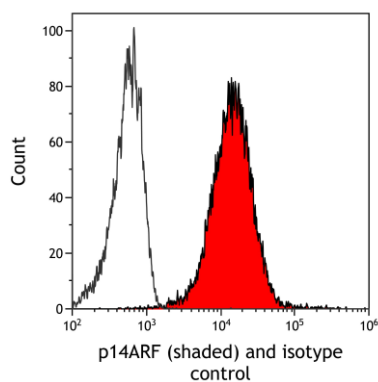
**Detection of human p14ARF by western blot of immunoprecipitates.** *Samples:* Whole cell lysate (1.0 mg per IP reaction; 20% of IP loaded) from HeLa cells prepared using NETN lysis buffer. *Antibodies:* Rabbit anti-p14ARF recombinant monoclonal antibody [BLR325M] (A700-325 lot 1) used for IP at 20 µl/mg lysate. p14ARF was also immunoprecipitated by p14ARF (A300-340A). For blotting immunoprecipitated p14ARF, A700-325 was used at 1:1000. *Detection:* Chemiluminescence with an exposure time of 1 second.



**Detection of human p14ARF by immunohistochemistry.** *Sample:* FFPE section of breast carcinoma. *Antibody:* Rabbit anti-p14ARF recombinant monoclonal antibody [BLR325M] (A700-325). *Secondary:* HRP-conjugated goat anti-rabbit IgG (A120-501P).



**Detection of human p14ARF by immunocytochemistry.** *Sample:* FFPE section of HeLa cells treated with etoposide. *Antibody:* Rabbit anti-p14ARF recombinant monoclonal antibody [BLR325M] (A700-325). *Secondary:* HRP-conjugated goat anti-rabbit IgG (A120-501P).



**Detection of human p14ARF (shaded) in HeLa cells by flow cytometry.** *Antibody:* Rabbit anti-p14ARF recombinant monoclonal antibody [BLR325M] (A700-325) or isotype control (unshaded). Fixed in 4% formaldehyde and permeabilized with 90% methanol. 1  $\mu$ l per  $1 \times 10^6$  cells. *Secondary:* DyLight® 650-conjugated goat anti-rabbit IgG (A120-101D5).