



SZABO SCANDIC

Part of Europa Biosite

Produktinformation



Forschungsprodukte & Biochemikalien



Zellkultur & Verbrauchsmaterial



Diagnostik & molekulare Diagnostik



Laborgeräte & Service

Weitere Information auf den folgenden Seiten!
See the following pages for more information!



Lieferung & Zahlungsart

siehe unsere [Liefer- und Versandbedingungen](#)

Zuschläge

- Mindermengenzuschlag
- Trockeneiszuschlag
- Gefahrgutzuschlag
- Expressversand

SZABO-SCANDIC Handels GmbH

Quellenstraße 110, A-1100 Wien

T. +43(0)1 489 3961-0

F. +43(0)1 489 3961-7

mail@szabo-scandic.com

www.szabo-scandic.com

[linkedin.com/company/szaboscandic](https://www.linkedin.com/company/szaboscandic) 

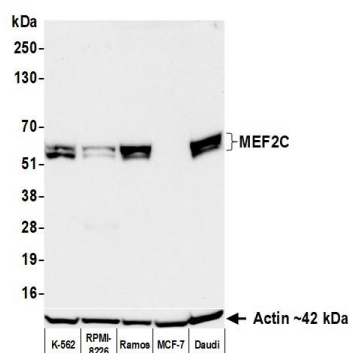
MEF2C Recombinant Monoclonal Antibody [BLR327M]

Rabbit Recombinant Monoclonal

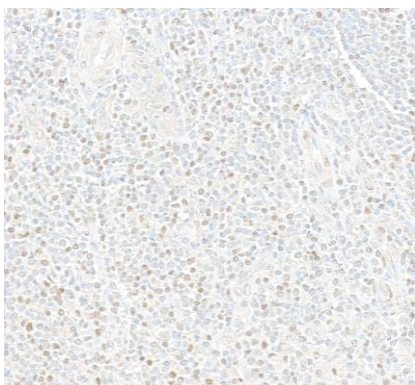
Purified		RefSeq ID	NP_002388.2
Catalog No.	A700-327-T	Uniprot ID	Q06413
Lot No.	1	GeneID	4208

APPLICATIONS	WB, IP, IHC						
SPECIES REACTIVITY	Human, Mouse						
AMOUNT	10 µl (5+ tests)						
CONCENTRATION	1000 µg/ml						
STORAGE/SHELF LIFE	2 – 8°C / 1 year from date of receipt						
PHYSICAL STATE	Liquid						
BUFFER	Phosphate Buffered Saline (PBS) with 0.09% Sodium Azide, BSA-Free						
ISOTYPE	IgG						
CLONE #	BLR327M						
ORIGIN	USA						
PRODUCTION PROCEDURES	<p>Recombinant antibody was purified from cell culture supernatant.</p> <p>Immunogen was a peptide representing a region between residue 425 and 475 of human Myocyte-specific enhancer factor 2C using the numbering given in entry NP_002388.2 (Gene ID 4208).</p>						
APPLICATIONS	<p>Centrifuge tube to remove product from lid. Optimal working dilutions should be determined experimentally by the investigator. Prepare working dilution immediately before use.</p> <table><tr><td>Western Blot</td><td>1:1,000</td></tr><tr><td>Immunoprecipitation</td><td>6 µl/mg lysate</td></tr><tr><td>Immunohistochemistry</td><td>1:100 to 1:500. Epitope retrieval with citrate buffer pH 6.0 is recommended for FFPE tissue sections.</td></tr></table>	Western Blot	1:1,000	Immunoprecipitation	6 µl/mg lysate	Immunohistochemistry	1:100 to 1:500. Epitope retrieval with citrate buffer pH 6.0 is recommended for FFPE tissue sections.
Western Blot	1:1,000						
Immunoprecipitation	6 µl/mg lysate						
Immunohistochemistry	1:100 to 1:500. Epitope retrieval with citrate buffer pH 6.0 is recommended for FFPE tissue sections.						
APPLICATION NOTES	<p>All western blot analysis is performed using 5% Milk-TBST for blocking and as antibody diluent. Primary antibody is incubated overnight.</p> <p>Western blots of cell lysates are performed using Goat anti-Rabbit IgG Heavy and Light Chain Antibody (A120-101P).</p> <p>Western blots of immunoprecipitates are performed using Goat anti-Rabbit Light Chain HRP Conjugate (A120-113P) with 5% Normal Pig Serum (S100-020) added to the blocking buffer.</p>						
IHC HUMAN CONTROLS	Appendix, Hodgkin Lymphoma, Spleen, Tonsil						
IHC MOUSE CONTROLS	Brain, Spleen, Thymus						
ADDITIONAL INFO	<p>https://www.fortislifesciences.com/p/A700-327-T</p> <p>Use the link above to view SDS, a current list of citations, and other product specific information.</p>						

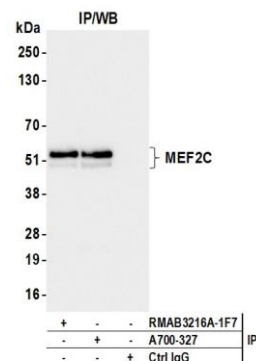
This document certifies that this product has met all of the quality control standards defined by Bethyl Laboratories, Inc.
Michael Spencer, PhD Date: June 25, 2024



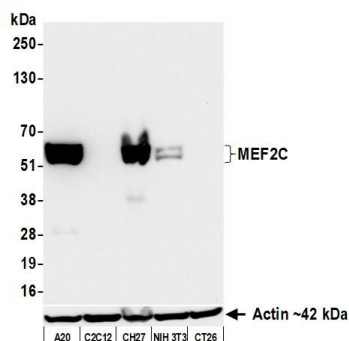
Detection of human MEF2C by western blot. *Samples:* Whole cell lysate (50 µg) from K-562, RPMI-8226, Ramos, MCF-7, and Daudi cells prepared using NETN lysis buffer. *Antibody:* Rabbit anti-MEF2C recombinant monoclonal antibody [BLR327M] (A700-327 lot 1) used at 1:1000. *Secondary:* HRP-conjugated goat anti-rabbit IgG (A120-101P). *Detection:* Chemiluminescence with an exposure time of 30 seconds. Lower Panel: Rabbit anti-Actin recombinant monoclonal antibody [BLR057F] (A700-057).



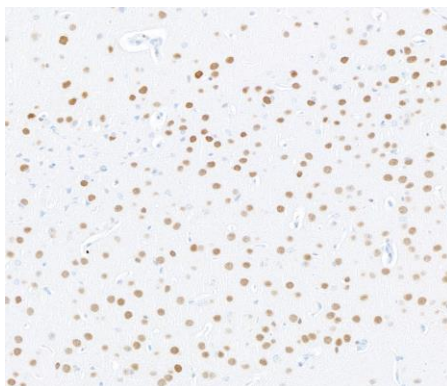
Detection of human MEF2C by immunohistochemistry. *Sample:* FFPE section of tonsil. *Antibody:* Rabbit anti-MEF2C recombinant monoclonal antibody [BLR327M] (A700-327). *Secondary:* HRP-conjugated goat anti-rabbit IgG (A120-501P).



Detection of human MEF2C by western blot of immunoprecipitates. *Samples:* Whole cell lysate (1.0 mg per IP reaction; 20% of IP loaded) from Ramos cells prepared using NETN lysis buffer. *Antibodies:* Rabbit anti-MEF2C recombinant monoclonal antibody [BLR327M] (A700-327 lot 1) used for IP at 6 µl per reaction. MEF2C was also immunoprecipitated by a second antibody against a different epitope of MEF2C (RMAB3216A-1F7). For blotting immunoprecipitated MEF2C, A700-327 was used at 1:1000. *Detection:* Chemiluminescence with an exposure time of 3 seconds.



Detection of mouse MEF2C by western blot. *Samples:* Whole cell lysate (50 µg) from A20, C2C12, CH27, NIH 3T3, and CT26 cells prepared using NETN lysis buffer. *Antibody:* Rabbit anti-MEF2C recombinant monoclonal antibody [BLR327M] (A700-327 lot 1) used at 1:1000. *Secondary:* HRP-conjugated goat anti-rabbit IgG (A120-101P). *Detection:* Chemiluminescence with an exposure time of 30 seconds. Lower Panel: Rabbit anti-Actin recombinant monoclonal antibody [BLR057F] (A700-057).

**Detection of mouse MEF2C by immunohistochemistry.**

Sample: FFPE section of mouse brain. *Antibody:* Rabbit anti-MEF2C recombinant monoclonal antibody [BLR327M] (A700-327). *Secondary:* HRP-conjugated goat anti-rabbit IgG (A120-501P).