



SZABO SCANDIC

Part of Europa Biosite

Produktinformation



Forschungsprodukte & Biochemikalien



Zellkultur & Verbrauchsmaterial



Diagnostik & molekulare Diagnostik



Laborgeräte & Service

Weitere Information auf den folgenden Seiten!
See the following pages for more information!



Lieferung & Zahlungsart

siehe unsere [Liefer- und Versandbedingungen](#)

Zuschläge

- Mindermengenzuschlag
- Trockeneiszuschlag
- Gefahrgutzuschlag
- Expressversand

SZABO-SCANDIC HandelsgmbH

Quellenstraße 110, A-1100 Wien

T. +43(0)1 489 3961-0

F. +43(0)1 489 3961-7

mail@szabo-scandic.com

www.szabo-scandic.com

[linkedin.com/company/szaboscandic](https://www.linkedin.com/company/szaboscandic) 

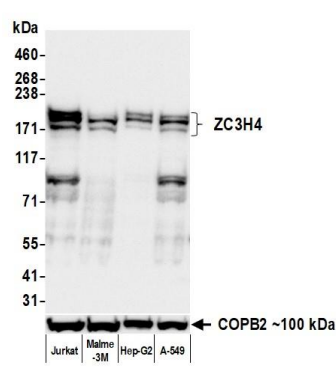
ZC3H4 Recombinant Monoclonal Antibody [BLR334M]

Rabbit Recombinant Monoclonal

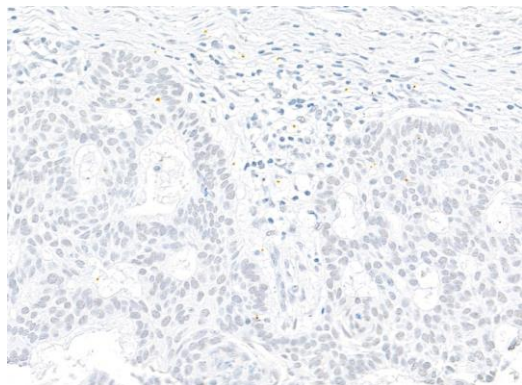
Purified		RefSeq ID	NP_055983.1
Catalog No.	A700-334-T	Uniprot ID	Q9UPT8
Lot No.	1	GeneID	23211

APPLICATIONS	WB, IP, IHC, ICC, Flow Cyt										
SPECIES REACTIVITY	Human										
AMOUNT	10 µl (5+ tests)										
CONCENTRATION	100 µg/ml										
STORAGE/SHELF LIFE	2 – 8°C / 1 year from date of receipt										
PHYSICAL STATE	Liquid										
BUFFER	Phosphate Buffered Saline (PBS) with 0.1% BSA and 0.09% Sodium Azide										
ISOTYPE	IgG										
CLONE #	BLR334M										
ORIGIN	USA										
PRODUCTION PROCEDURES	<p>Recombinant antibody was purified from cell culture supernatant.</p> <p>Immunogen was a peptide representing a region between residue 1050 and 1100 of human Zinc finger CCCH domain-containing protein 4 using the numbering given in entry NP_055983.1 (Gene ID 23211).</p>										
APPLICATIONS	<p>Centrifuge tube to remove product from lid. Optimal working dilutions should be determined experimentally by the investigator. Prepare working dilution immediately before use.</p> <table><tr><td>Western Blot</td><td>1:1,000</td></tr><tr><td>Immunoprecipitation</td><td>20 µl/mg lysate</td></tr><tr><td>Immunohistochemistry</td><td>1:100 to 1:500. Epitope retrieval with citrate buffer pH 6.0 is recommended for FFPE tissue sections.</td></tr><tr><td>Immunocytochemistry</td><td>1:100 to 1:500. Epitope retrieval with citrate buffer pH 6.0 is recommended for FFPE cell sections.</td></tr><tr><td>Flow Cytometry</td><td>Fixed in 4% formaldehyde and permeabilized with 90% methanol. 1 µl per 1 x 10⁶ cells.</td></tr></table>	Western Blot	1:1,000	Immunoprecipitation	20 µl/mg lysate	Immunohistochemistry	1:100 to 1:500. Epitope retrieval with citrate buffer pH 6.0 is recommended for FFPE tissue sections.	Immunocytochemistry	1:100 to 1:500. Epitope retrieval with citrate buffer pH 6.0 is recommended for FFPE cell sections.	Flow Cytometry	Fixed in 4% formaldehyde and permeabilized with 90% methanol. 1 µl per 1 x 10 ⁶ cells.
Western Blot	1:1,000										
Immunoprecipitation	20 µl/mg lysate										
Immunohistochemistry	1:100 to 1:500. Epitope retrieval with citrate buffer pH 6.0 is recommended for FFPE tissue sections.										
Immunocytochemistry	1:100 to 1:500. Epitope retrieval with citrate buffer pH 6.0 is recommended for FFPE cell sections.										
Flow Cytometry	Fixed in 4% formaldehyde and permeabilized with 90% methanol. 1 µl per 1 x 10 ⁶ cells.										
APPLICATION NOTES	<p>All western blot analysis is performed using 5% Milk-TBST for blocking and as antibody diluent.</p> <p>Primary antibody is incubated overnight. Western blots of cell lysates are performed using Goat anti-Rabbit IgG Heavy and Light Chain Antibody (A120-101P).</p> <p>Western blots of immunoprecipitates are performed using Goat anti-Rabbit Light Chain HRP Conjugate (A120-113P) with 5% Normal Pig Serum (S100-020) added to the blocking buffer.</p>										
IHC HUMAN CONTROLS	Colon Carcinoma, Ovarian Carcinoma, Skin Carcinoma, A549 Cells, Hep-G2 Cells, LNCap Cells										
ADDITIONAL INFO	<p>https://www.fortislifesciences.com/p/A700-334-T</p> <p>Use the link above to view SDS, a current list of citations, and other product specific information.</p>										

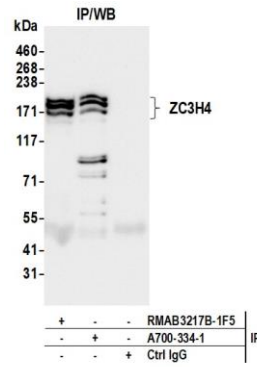
This document certifies that this product has met all of the quality control standards defined by Bethyl Laboratories, Inc.
Michael Spencer, PhD Date: September 30, 2024



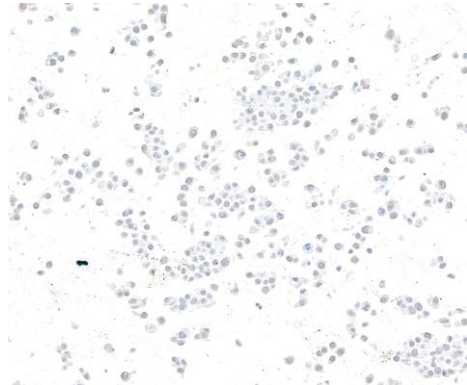
Detection of human ZC3H4 by western blot. *Samples:* Whole cell lysate (50 µg) from Jurkat, Malme-3M, Hep-G2, and A-549 cells prepared using NETN lysis buffer. *Antibody:* Rabbit anti-ZC3H4 recombinant monoclonal antibody [BLR334M] (A700-334 lot 1) used at 1:1000. *Secondary:* HRP-conjugated goat anti-rabbit IgG (A120-101P). *Detection:* Chemiluminescence with an exposure time of 10 seconds. Lower Panel: Rabbit anti-COPB2 antibody (A304-523A).



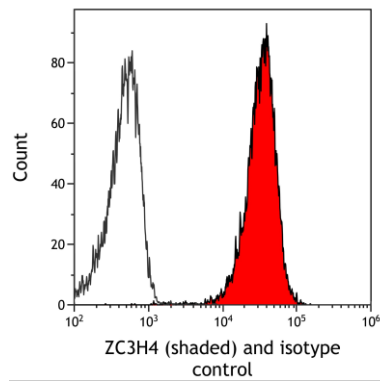
Detection of human ZC3H4 by immunohistochemistry. *Sample:* FFPE section of skin carcinoma. *Antibody:* Rabbit anti-ZC3H4 recombinant monoclonal antibody [BLR334M] (A700-334). *Secondary:* HRP-conjugated goat anti-rabbit IgG (A120-501P).



Detection of human ZC3H4 by western blot of immunoprecipitates. *Samples:* Whole cell lysate (1.0 mg per IP reaction; 20% of IP loaded) from Jurkat cells prepared using NETN lysis buffer. *Antibodies:* Rabbit anti-ZC3H4 recombinant monoclonal antibody [BLR334M] (A700-334 lot 1) used for IP at 20 µl/mg lysate. ZC3H4 was also immunoprecipitated by a second antibody against a different epitope of ZC3H4 (RMAB3217B-1F5). For blotting immunoprecipitated ZC3H4, A700-334 was used at 1:1000. *Detection:* Chemiluminescence with an exposure time of 10 seconds.



Detection of human ZC3H4 by immunocytochemistry. *Sample:* FFPE section of HepG2 cells. *Antibody:* Rabbit anti-ZC3H4 recombinant monoclonal antibody [BLR334M] (A700-334). *Secondary:* HRP-conjugated goat anti-rabbit IgG (A120-501P).



Detection of human ZC3H4 (shaded) in KG-1 cells by flow cytometry. *Antibody:* Rabbit anti-ZC3H4 recombinant monoclonal antibody [BLR334M] (A700-334) or isotype control (unshaded). *Secondary:* DyLight® 650-conjugated goat anti-rabbit IgG (A120-101D5).