



SZABO SCANDIC

Part of Europa Biosite

Produktinformation



Forschungsprodukte & Biochemikalien



Zellkultur & Verbrauchsmaterial



Diagnostik & molekulare Diagnostik



Laborgeräte & Service

Weitere Information auf den folgenden Seiten!
See the following pages for more information!



Lieferung & Zahlungsart

siehe unsere [Liefer- und Versandbedingungen](#)

Zuschläge

- Mindermengenzuschlag
- Trockeneiszuschlag
- Gefahrgutzuschlag
- Expressversand

SZABO-SCANDIC Handels GmbH

Quellenstraße 110, A-1100 Wien

T. +43(0)1 489 3961-0

F. +43(0)1 489 3961-7

mail@szabo-scandic.com

www.szabo-scandic.com

[linkedin.com/company/szaboscandic](https://www.linkedin.com/company/szaboscandic)



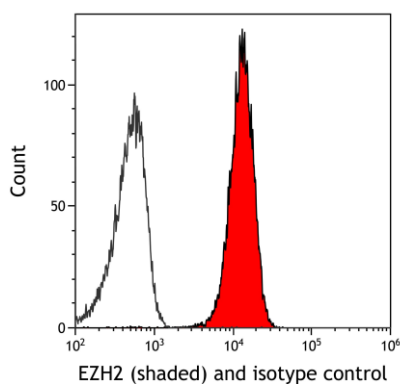
EZH2 Recombinant Monoclonal Antibody [BLR338M]

Rabbit Recombinant Monoclonal

Purified		RefSeq ID	NP_004447.2
Catalog No.	A700-338-T	Uniprot ID	Q15910
Lot No.	1	GenelD	2146

APPLICATIONS	WB, IP, IHC, ICC, Flow Cyt
SPECIES REACTIVITY	Human, Mouse
AMOUNT	10 µl (5+ tests)
CONCENTRATION	1000 µg/ml
STORAGE/SHELF LIFE	2 – 8°C / 1 year from date of receipt
PHYSICAL STATE	Liquid
BUFFER	Phosphate Buffered Saline (PBS) with 0.09% Sodium Azide, BSA-Free
ISOTYPE	IgG
CLONE #	BLR338M
ORIGIN	USA
PRODUCTION PROCEDURES	Recombinant antibody was purified from cell culture supernatant. Immunogen was a recombinant protein representing human Histone-lysine N-methyltransferase EZH2 (residues 1–154, NP_004447.2).
APPLICATIONS	Centrifuge tube to remove product from lid. Optimal working dilutions should be determined experimentally by the investigator. Prepare working dilution immediately before use. Western Blot 1:1,000 Immunoprecipitation 6 µl/mg lysate Immunohistochemistry 1:100 to 1:500. Epitope retrieval with citrate buffer pH 6.0 is recommended for FFPE tissue sections. Immunocytochemistry 1:100 to 1:500. Epitope retrieval with citrate buffer pH 6.0 is recommended for FFPE cell sections. Flow Cytometry Fixed in 4% formaldehyde and permeabilized with 90% methanol. 0.5 µl per 1 x 10 ⁶ cells.
APPLICATION NOTES	All western blot analysis is performed using 5% Milk-TBST for blocking and as antibody diluent. Primary antibody is incubated overnight. Western blots of cell lysates are performed using Goat anti-Rabbit IgG Heavy and Light Chain Antibody (A120-101P). Western blots of immunoprecipitates are performed using Goat anti-Rabbit Light Chain HRP Conjugate (A120-113P) with 5% Normal Pig Serum (S100-020) added to the blocking buffer.
IHC HUMAN CONTROLS	Breast Carcinoma, Tonsil, HT-29 Cells, MOLT-4 Cells
IHC MOUSE CONTROLS	Spleen, CT26 Cells
ADDITIONAL INFO	https://www.fortislife.com/p/A700-338-T Use the link above to view SDS, a current list of citations, and other product specific information.

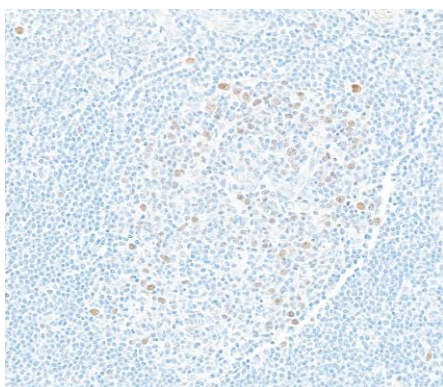
This document certifies that this product has met all of the quality control standards defined by Bethyl Laboratories, Inc.
Michael Spencer, PhD Date: November 6, 2024



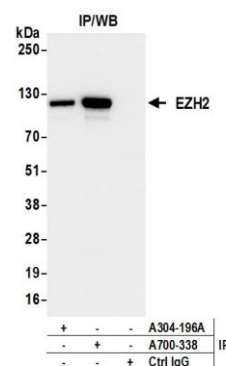
Detection of human EZH2 (shaded) in SK-N-MC cells by flow cytometry. *Antibody:* Rabbit anti-EZH2 recombinant monoclonal antibody [BLR338M] (A700-338) or isotype control (unshaded). *Secondary:* DyLight® 650-conjugated goat anti-rabbit IgG (A120-101D5).



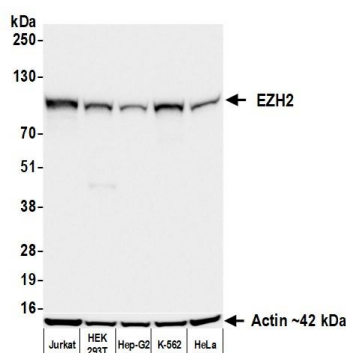
Detection of human EZH2 by immunocytochemistry. *Sample:* FFPE section of MOLT-4 cells. *Antibody:* Rabbit anti-EZH2 recombinant monoclonal antibody [BLR338M] (A700-338). *Secondary:* HRP-conjugated goat anti-rabbit IgG (A120-501P).



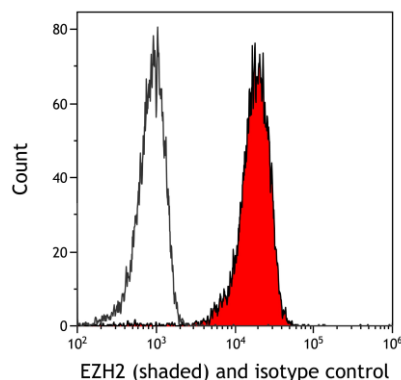
Detection of human EZH2 by immunohistochemistry. *Sample:* FFPE section of tonsil. *Antibody:* Rabbit anti-EZH2 recombinant monoclonal antibody [BLR338M] (A700-338). *Secondary:* HRP-conjugated goat anti-rabbit IgG (A120-501P).



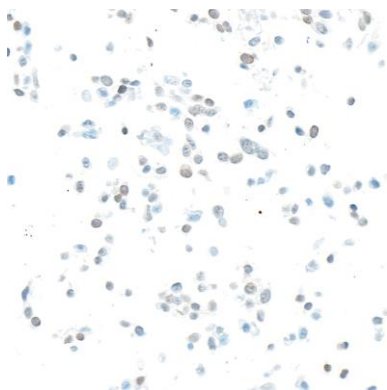
Detection of human EZH2 by western blot of immunoprecipitates. *Samples:* Whole cell lysate (1.0 mg per IP reaction; 20% of IP loaded) from Jurkat cells prepared using NETN lysis buffer. *Antibodies:* Rabbit anti-EZH2 recombinant monoclonal antibody [BLR338M] (A700-338) used for IP at 6 µl per reaction. EZH2 was also immunoprecipitated by a second antibody against a different epitope of EZH2 (A304-196A). For blotting immunoprecipitated EZH2, A700-338 was used at 1:1000. *Detection:* Chemiluminescence with an exposure time of 10 seconds.



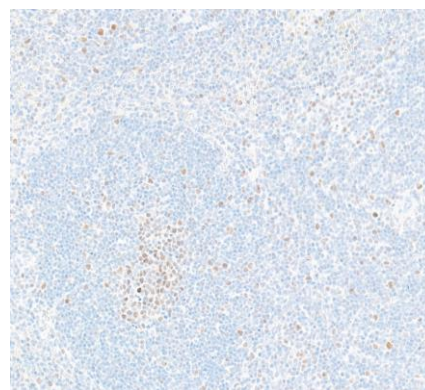
Detection of human EZH2 by western blot. *Samples:* Whole cell lysate (50 µg) from Jurkat, HEK293T, Hep-G2, K-562, and HeLa cells prepared using NETN lysis buffer. *Antibody:* Rabbit anti-EZH2 recombinant monoclonal antibody [BLR338M] (A700-338) used at 1:1000. *Secondary:* HRP-conjugated goat anti-rabbit IgG (A120-101P). *Detection:* Chemiluminescence with an exposure time of 3 seconds. Lower Panel: Rabbit anti-Actin recombinant monoclonal antibody [BLR057F] (A700-057).



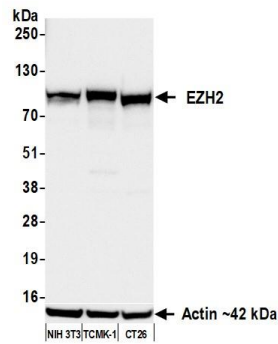
Detection of mouse EZH2 (shaded) in NIH 3T3 cells by flow cytometry. *Antibody:* Rabbit anti-EZH2 recombinant monoclonal antibody [BLR338M] (A700-338) or isotype control (unshaded). *Secondary:* DyLight® 650-conjugated goat anti-rabbit IgG (A120-101D5).



Detection of mouse EZH2 by immunocytochemistry. *Sample:* FFPE section of mouse CT26 cells. *Antibody:* Rabbit anti-EZH2 recombinant monoclonal antibody [BLR338M] (A700-338). *Secondary:* HRP-conjugated goat anti-rabbit IgG (A120-501P).



Detection of mouse EZH2 by immunohistochemistry. *Sample:* FFPE section of mouse spleen. *Antibody:* Rabbit anti-EZH2 recombinant monoclonal antibody [BLR338M] (A700-338). *Secondary:* HRP-conjugated goat anti-rabbit IgG (A120-501P).



Detection of mouse EZH2 by western blot. *Samples:* Whole cell lysate (50 µg) from NIH 3T3, TCMK-1, and CT26 cells prepared using NETN lysis buffer. *Antibody:* Rabbit anti-EZH2 recombinant monoclonal antibody [BLR338M] (A700-338) used at 1:1000. *Secondary:* HRP-conjugated goat anti-rabbit IgG (A120-101P). *Detection:* Chemiluminescence with an exposure time of 10 seconds. Lower Panel: Rabbit anti-Actin recombinant monoclonal antibody [BLR057F] (A700-057).