



SZABO SCANDIC

Part of Europa Biosite

Produktinformation



Forschungsprodukte & Biochemikalien



Zellkultur & Verbrauchsmaterial



Diagnostik & molekulare Diagnostik



Laborgeräte & Service

Weitere Information auf den folgenden Seiten!
See the following pages for more information!



Lieferung & Zahlungsart

siehe unsere [Liefer- und Versandbedingungen](#)

Zuschläge

- Mindermengenzuschlag
- Trockeneiszuschlag
- Gefahrgutzuschlag
- Expressversand

SZABO-SCANDIC HandelsgmbH

Quellenstraße 110, A-1100 Wien

T. +43(0)1 489 3961-0

F. +43(0)1 489 3961-7

mail@szabo-scandic.com

www.szabo-scandic.com

[linkedin.com/company/szaboscandic](https://www.linkedin.com/company/szaboscandic) 



Biomol BLUEplus-wide prestained Protein Ladder (3.5-245 kDa)

Catalog No: 10009
Lot No: XXXXX
Supplied as: 500 µl
Stability: store at 4°C for 3 months
 or at -20°C for 24 months

Background

The BLUEplus-wide prestained Protein Ladder is a three-color protein standard with 13 pre-stained proteins covering a wide range molecular weights from 3.5 to 245 kDa. Proteins are covalently coupled with a blue chromophore except for two reference bands (one green and one red band at 25 kDa and 75 kDa respectively) when separated on SDS-PAGE (Tris-glycine buffer). The BLUEplus-wide prestained Protein Ladder is designed for monitoring protein separation during SDS-polyacrylamide gel electrophoresis, verification of Western transfer efficiency on membranes (PVDF, nylon, or nitrocellulose) and for approximating the size of proteins. The ladder is supplied in gel loading buffer and is ready to use. Do not heat, dilute, add reducing agent before loading.

Formulation

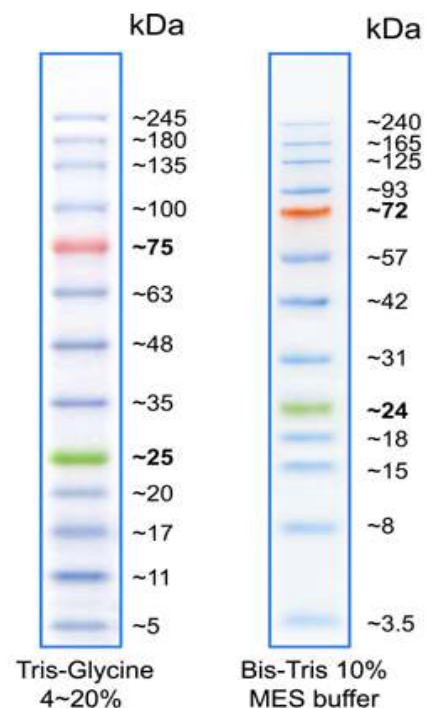
Approximately 0.1 ~ 0.4 mg/ml of each protein in the buffer (20 mM Tris-phosphate, pH 7.5 at 25°C), 2 % SDS, 10 mM Dithiothreitol, 3.6 M Urea, and 15 % (v/v) Glycerol.

Protocol for use in SDS-PAGE

- Thaw the ladder either at room temperature or at 37 - 40°C for a few minutes to dissolve precipitated solids. Do not boil.
- Mix thoroughly to ensure the solution is homogeneous.
- Load the following volumes of the ladder on SDS-PAGE:

Mini gel: 3 µl per well for SDS-PAGE, 1.5 µl for WB

Large gel: 6 µl per well for SDS-PAGE, 3 µl for WB



Usage

This product is offered by Biomol for research purposes only. Not for diagnostic purposes or human use. It may not be resold or used to manufacture commercial products without written approval of Biomol GmbH.