



# SZABO SCANDIC

Part of Europa Biosite

## Produktinformation



Forschungsprodukte & Biochemikalien



Zellkultur & Verbrauchsmaterial



Diagnostik & molekulare Diagnostik



Laborgeräte & Service

Weitere Information auf den folgenden Seiten!  
See the following pages for more information!



### Lieferung & Zahlungsart

siehe unsere [Liefer- und Versandbedingungen](#)

### Zuschläge

- Mindermengenzuschlag
- Trockeneiszuschlag
- Gefahrgutzuschlag
- Expressversand

### SZABO-SCANDIC HandelsgmbH

Quellenstraße 110, A-1100 Wien

T. +43(0)1 489 3961-0

F. +43(0)1 489 3961-7

[mail@szabo-scandic.com](mailto:mail@szabo-scandic.com)

[www.szabo-scandic.com](http://www.szabo-scandic.com)

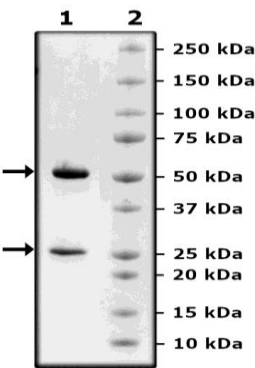
[linkedin.com/company/szaboscandic](https://www.linkedin.com/company/szaboscandic) 

## Product Information

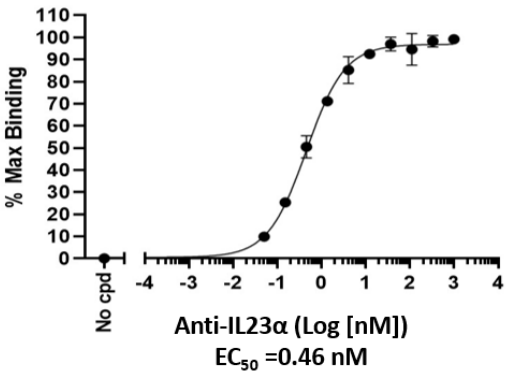
<b>Description:</b>	This purified recombinant monoclonal antibody is a human anti-IL23 $\alpha$ that selectively binds to the p19 subunit of heterodimeric IL-23, which is composed of p19 and IL-12 p40. The variable regions for this antibody are based on an FDA-approved drug Skyrizi® (risankizumab-rzaa), sold by AbbVie. This antibody has been tested for specific binding affinity to IL23 $\alpha$ /IL12 $\beta$ antigen.
<b>Species:</b>	Human
<b>Concentration:</b>	1.48 mg/ml
<b>Expression System:</b>	HEK293
<b>Purity:</b>	≥90%
<b>Format:</b>	Aqueous buffer solution.
<b>Formulated In:</b>	8 mM phosphate, pH 7.4, 110 mM NaCl, 2.2 mM KCl, and 20% glycerol
<b>MW:</b>	Heavy Chain: 49 kDa; Light Chain: 24 kDa
<b>Aggregation:</b>	<10%
<b>Stability:</b>	At least 6 months at -80°C.
<b>Storage:</b>	-80°C
<b>Instructions for Use:</b>	Thaw on ice and gently mix prior to use. DO NOT VORTEX. Perform a quick spin before opening. Aliquot into small volumes and flash freeze for long term storage. Avoid multiple freeze/thaw cycles.
<b>Assay Conditions:</b>	Functional validation: The antibody was validated by measuring anti-IL23 $\alpha$ binding to IL23 $\alpha$ /IL12 $\beta$ antigen (Acro Biosystems #ILB-H52W5) in ELISA assay. The IL23 $\alpha$ /IL12 $\beta$ protein was coated onto a 96-well plate overnight at 4°C (50 $\mu$ l/well at a concentration of 6 $\mu$ g/ml in PBS). The plate was washed 3 times with Immuno Buffer 1 (BPS Bioscience #79311) and blocked using 100 $\mu$ l of Blocking Buffer 2 (BPS Bioscience #79728) for 1 hour at room temperature. After removing the blocking buffer, 50 $\mu$ l/well of purified anti-IL23 $\alpha$ antibody (BPS Bioscience #101453), serially diluted in Blocking Buffer 2, was added for 60 minutes at room temperature. After 3 more washes, the plate was incubated with Goat Anti-Human IgG Fc (HRP) (Abcam #ab97225), washed, and incubated with Colorimetric HRP substrate. The reaction was stopped, and absorbance was read at 450 nm. The Blank value was subtracted from all values.
<b>Applications:</b>	Useful for the study of enzyme kinetics, screening inhibitors, and selectivity profiling.

Quality Control Data

4-20% SDS-PAGE Coomassie Staining



IL23α/IL12β:Anti IL23α Activity



Quality Control Data

Gel Filtration Curve

