



SZABO SCANDIC

Part of Europa Biosite

Produktinformation



Forschungsprodukte & Biochemikalien



Zellkultur & Verbrauchsmaterial



Diagnostik & molekulare Diagnostik



Laborgeräte & Service

Weitere Information auf den folgenden Seiten!
See the following pages for more information!



Lieferung & Zahlungsart

siehe unsere [Liefer- und Versandbedingungen](#)

Zuschläge

- Mindermengenzuschlag
- Trockeneiszuschlag
- Gefahrgutzuschlag
- Expressversand

SZABO-SCANDIC HandelsgmbH

Quellenstraße 110, A-1100 Wien

T. +43(0)1 489 3961-0

F. +43(0)1 489 3961-7

mail@szabo-scandic.com

www.szabo-scandic.com

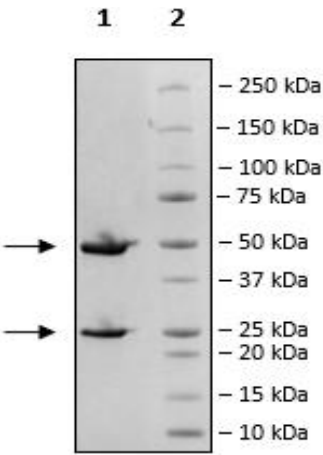
[linkedin.com/company/szaboscandic](https://www.linkedin.com/company/szaboscandic) 

Product Information

Description:	This anti-GPRC5D (G protein-coupled receptor class C group 5 member D) antibody is a purified, recombinant monoclonal antibody that recognizes human GPRC5D. The heavy chain construct includes a C-terminal Fc domain. This antibody has been tested for specific binding to human GPRC5D by flow cytometry.
Background:	GPRC5D (G protein-coupled receptor class C group 5 member D) is an orphan receptor of little-known function belonging to the large family of G protein-coupled receptors. The protein is highly expressed in malignant plasma cells such multiple myeloma and is now considered a therapeutic target for antibody-based treatment of multiple myeloma. For example, CAR-T cells and GPCR5DxCD3 bispecific antibodies resulted in promising outcomes at levels well tolerated by the patients.
Species:	Human
Isotype:	IgG4
Clonality:	Monoclonal
Concentration:	0.32 mg/ml
Expression System:	HEK293
Purity:	≥90%
Format:	Aqueous buffer solution.
Formulated In:	8 mM phosphate, pH 7.4, 110 mM NaCl, 2.2 mM KCl, and 20% glycerol
MW:	Heavy Chain: 49 kDa + glycans; Light Chain: 24 kDa
Glycosylation:	This antibody runs at a higher MW by SDS-PAGE due to glycosylation.
Stability:	At least 12 months at -80°C.
Storage:	-80°C
Instructions for Use:	Thaw on ice and gently mix prior to use. DO NOT VORTEX. Perform a quick spin before opening. Aliquot into small volumes and flash freeze for long term storage. Avoid multiple freeze/thaw cycles.
Assay Conditions:	One million of GPRC5D CHO cells (BPS Bioscience #78337) (green) and CHO-K1 cells (blue) were incubated with 1 µg of Anti-GPRC5D Antibody (BPS Bioscience #102000) for 30 minutes on ice. Cells were washed three times, then stained with Goat anti-Human IgG Fc Secondary Antibody, PE, eBioscience™ (Invitrogen #12-4998-82), washed three times, and analyzed by flow cytometry. The Y-axis represents the cell count. The X-axis indicates PE intensity.
Applications:	Useful for the flow cytometry analysis of human GPRC5D.

Quality Control Data

4-20% SDS-PAGE Coomassie Staining



Flow Cytometry

