



# SZABO SCANDIC

Part of Europa Biosite

## Produktinformation



Forschungsprodukte & Biochemikalien



Zellkultur & Verbrauchsmaterial



Diagnostik & molekulare Diagnostik



Laborgeräte & Service

Weitere Information auf den folgenden Seiten!  
See the following pages for more information!



### Lieferung & Zahlungsart

siehe unsere [Liefer- und Versandbedingungen](#)

### Zuschläge

- Mindermengenzuschlag
- Trockeneiszuschlag
- Gefahrgutzuschlag
- Expressversand

### SZABO-SCANDIC HandelsgmbH

Quellenstraße 110, A-1100 Wien

T. +43(0)1 489 3961-0

F. +43(0)1 489 3961-7

[mail@szabo-scandic.com](mailto:mail@szabo-scandic.com)

[www.szabo-scandic.com](http://www.szabo-scandic.com)

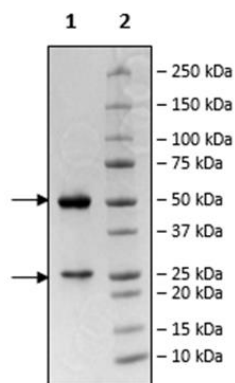
[linkedin.com/company/szaboscandic](https://www.linkedin.com/company/szaboscandic) 

## Product Information

<b>Description:</b>	This anti-CD40L (cluster of differentiation 40 ligand) antibody is a purified, recombinant humanized monoclonal antibody that neutralizes CD40L, also known as TNFRSF5 (tumor necrosis factor receptor superfamily 5). This antibody has been tested in a binding assay. It is similar to Frexalimab.
<b>Background:</b>	CD40 (cluster of differentiation 40), also known as TNFRSF5 (tumor necrosis factor receptor superfamily 5) is a type I transmembrane protein involved in the activation of antigen presenting cells (APCs), such as dendritic cells, B cells, and macrophages. It is also found in epithelial and endothelial cells, and in tumor cells. CD40L, also known as TNFSF5 (tumor necrosis factor super family member 5) and CD154, is a type II membrane glycoprotein that exists in cells in membrane bound (mCD40L) and soluble (sCD40L) forms. It is found at high levels in activated CD4 <sup>+</sup> T cells, and at lower levels in Th1, Th2, Th17 and Tregs. Expression can be induced in NK (natural killer) cells, CD8 <sup>+</sup> T cells, basophils, and others. CD40 and CD40L are stimulatory immune checkpoints, and their signaling is mediated by different TRAF (TNF receptor associated factor), in a cell and stimuli dependent mode. CD40 is implicated in Hyper IgM (immunoglobulin M) immunodeficiency, where IgM is found at high levels in the serum, while other IgG are present at lower-than-normal levels, and patients have higher risk of developing autoimmune diseases and cancer. The role of CD40 and CD40L as immune checkpoints makes them highly attractive targets in cancer therapy, and several clinical trials using anti-CD40 or anti-CD40L agonist antibodies are underway targeting both hematological and solid tumors. The inhibition of CD40:CD40L interaction is also clinically relevant as a treatment option for lupus, rheumatoid arthritis, and ALS (amyotrophic lateral sclerosis). Further therapeutic development will benefit cancer patients and patients suffering from autoimmune disorders.
<b>Species:</b>	Human
<b>Isotype:</b>	IgG1
<b>Concentration:</b>	0.9 mg/ml
<b>Expression System:</b>	HEK293
<b>Purity:</b>	≥90%
<b>Format:</b>	Aqueous buffer solution.
<b>Formulated In:</b>	8 mM phosphate, pH 7.4, 110 mM NaCl, 2.2 mM KCl, and 20% glycerol
<b>MW:</b>	Heavy chain: 49.4 kDa + glycans; Light chain: 23.4 kDa
<b>Glycosylation:</b>	This antibody runs at a higher MW by SDS-PAGE due to glycosylation.
<b>Stability:</b>	At least 12 months at -80°C.
<b>Storage:</b>	-80°C
<b>Instructions for Use:</b>	Thaw on ice and gently mix prior to use. DO NOT VORTEX. Perform a quick spin before opening. Aliquot into small volumes and flash freeze for long term storage. Avoid multiple freeze/thaw cycles.
<b>Assay Conditions:</b>	Assay was done according to CD40:CD40L TR-FRET Assay (#79258).
<b>Applications:</b>	Useful for binding assays.

## Quality Control Data

## 4-20% SDS-PAGE Coomassie Staining



## CD40:CD40L Activity

