



# SZABO SCANDIC

Part of Europa Biosite

## Produktinformation



Forschungsprodukte & Biochemikalien



Zellkultur & Verbrauchsmaterial



Diagnostik & molekulare Diagnostik



Laborgeräte & Service

Weitere Information auf den folgenden Seiten!  
See the following pages for more information!



### Lieferung & Zahlungsart

siehe unsere [Liefer- und Versandbedingungen](#)

### Zuschläge

- Mindermengenzuschlag
- Trockeneiszuschlag
- Gefahrgutzuschlag
- Expressversand

### SZABO-SCANDIC HandelsgmbH

Quellenstraße 110, A-1100 Wien

T. +43(0)1 489 3961-0

F. +43(0)1 489 3961-7

[mail@szabo-scandic.com](mailto:mail@szabo-scandic.com)

[www.szabo-scandic.com](http://www.szabo-scandic.com)

[linkedin.com/company/szaboscandic](https://www.linkedin.com/company/szaboscandic) 

## Data Sheet

### AKT2 Inactive

Human, recombinant, N-terminal His tag

**Catalog #:** 40001

Lot#: 100210                      Conc.: 0.38 mg/ml

---

**Formulated in:** 45 mM Tris-HCl, pH 8.0,  
124 mM NaCl, 2.4 mM KCl, 225 mM  
imidazole, 10% glycerol, and 3 mM DTT.

**Stability:** >6 months at -80 °C

**References:**

1. Alessi *et al.*, *Current Biology*. **8: 69**, 1998
2. Cohen *et al.*, *FEBS Lett.* **410: 3**, 1997

**Description:** Human Akt2 (GenBank Accession No. NM\_001626), full length with N-terminal HIS6 tag, MW=57 kDa, expressed in a Baculovirus infected Sf9 cell expression system.

**Application:** Useful for the study of enzyme kinetics, screening inhibitors, and selectivity profiling.

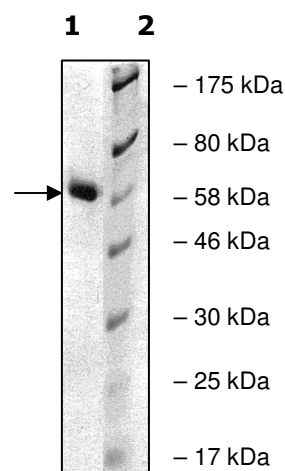
---

## Quality Assurance

**4-20% SDS-PAGE**  
**Coomassie staining**

**Lane 1:**  
AKT2 Inactive  
**Lane 2:**  
Protein Marker  
BioLabs (#P7708L)

**MW:** 57 kDa  
**Purity:** ≥90%



OUR PRODUCTS ARE FOR RESEARCH USE ONLY. NOT FOR DIAGNOSTIC OR THERAPEUTIC USE.

To place your order, please contact us by Phone **1.858.829.3082** Fax **1.858.481.8694**

Or you can Email us at: [info@bpsbioscience.com](mailto:info@bpsbioscience.com)

Please visit our website at: [www.bpsbioscience.com](http://www.bpsbioscience.com)