



SZABO SCANDIC

Part of Europa Biosite

Produktinformation



Forschungsprodukte & Biochemikalien



Zellkultur & Verbrauchsmaterial



Diagnostik & molekulare Diagnostik



Laborgeräte & Service

Weitere Information auf den folgenden Seiten!
See the following pages for more information!



Lieferung & Zahlungsart

siehe unsere [Liefer- und Versandbedingungen](#)

Zuschläge

- Mindermengenzuschlag
- Trockeneiszuschlag
- Gefahrgutzuschlag
- Expressversand

SZABO-SCANDIC HandelsgmbH

Quellenstraße 110, A-1100 Wien

T. +43(0)1 489 3961-0

F. +43(0)1 489 3961-7

mail@szabo-scandic.com

www.szabo-scandic.com

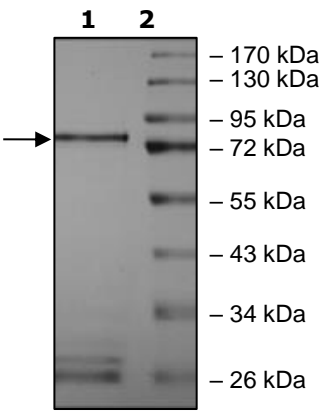
[linkedin.com/company/szaboscandic](https://www.linkedin.com/company/szaboscandic) 

Product Information

Description:	Recombinant human FGFR1 (fibroblast growth factor receptor 1), encompassing amino acids 399-822. This construct contains an N-terminal GST-tag and the mutation of interest V561M. The recombinant protein was affinity purified and is active.
Species:	Human
Construct:	FGFR1 (V561M) (GST-399-822)
Concentration:	0.10 mg/ml
Expression System:	Sf9
Purity:	≥90%
Format:	Aqueous buffer solution.
Formulated In:	50 mM Tris-HCl, pH 7.5, 150 mM NaCl, 10 mM Glutathione, 0.1 mM EDTA, 0.25 mM DTT, 0.1 mM PMSF, and 25% glycerol
MW:	75 kDa
Genbank Accession:	NM_023110
Stability:	At least 6 months at -80°C.
Storage:	-80°C
Instructions for Use:	Thaw on ice and gently mix prior to use. DO NOT VORTEX. Perform a quick spin before opening. Aliquot into small volumes and flash freeze for long term storage. Avoid multiple freeze/thaw cycles.
Specific Activity:	30 pmol/min/μg
Assay Conditions:	<p>FGFR1 (V561M) activity was measured by using the Poly(Glut4Tyr1) synthetic peptide, diluted in 25 mM Tris-HCl (pH 7.5) to a working concentration of 1 mg/ml, in the ADP Glo™ Kinase Assay kit (Promega #V9101). Reaction was initiated by mixing increasing amounts of FGFR1 (V561M) with 25 μM ATP in 40 mM Tris-HCl, pH 7.4, 20 mM MnCl₂, 0.1 mg/ml BSA prepared with 50 μM DTT, 12.5 mM MgCl₂ and substrate at a final concentration of 200 μg/ml.</p> <p>After a 40-minute incubation at room temperature, the reaction was terminated by addition of ADP-Glo™ Reagent, followed by a subsequent 40-minute incubation at room temperature. Kinase Detection Reagent was added, and the reaction was incubated for another 30 minutes at ambient temperature. Detection of luminescence was measured using the Luminescence Module Protocol on GloMax®-Multi Microplate Multimode Reader. The Specific Activity was calculated as follows: (Corrected activity, RLU) / [(Specific activity from ADP in RLU/pmol) * (Reaction time in min) * (Enzyme amount in μg or mg)]. Corrected RLU was calculated by subtracting the blank value from all the values. The blank was determined from a “no enzyme” sample by replacing the enzyme solution with an equal volume of Kinase Dilution Buffer X (1x).</p>
Applications:	Useful for the study of enzyme kinetics, screening inhibitors, and selectivity profiling.

Quality Control Data

4-20% SDS-PAGE Coomassie Staining



Specific Activity

