



# SZABO SCANDIC

Part of Europa Biosite

## Produktinformation



Forschungsprodukte & Biochemikalien



Zellkultur & Verbrauchsmaterial



Diagnostik & molekulare Diagnostik



Laborgeräte & Service

Weitere Information auf den folgenden Seiten!  
See the following pages for more information!



### Lieferung & Zahlungsart

siehe unsere [Liefer- und Versandbedingungen](#)

### Zuschläge

- Mindermengenzuschlag
- Trockeneiszuschlag
- Gefahrgutzuschlag
- Expressversand

### SZABO-SCANDIC HandelsgmbH

Quellenstraße 110, A-1100 Wien

T. +43(0)1 489 3961-0

F. +43(0)1 489 3961-7

[mail@szabo-scandic.com](mailto:mail@szabo-scandic.com)

[www.szabo-scandic.com](http://www.szabo-scandic.com)

[linkedin.com/company/szaboscandic](https://www.linkedin.com/company/szaboscandic)

## Data Sheet

### CDK9/CyclinT1, GST-tag

Human, recombinant, N-terminal GST-tag

**Catalog #:** 40307

**Lot #:** 140514

**Conc.:** 0.14 mg/ml

**Formulated in:** 40 mM Tris-HCl, pH 8.0, 110 mM NaCl, 2.2 mM KCl, 0.04% Tween-20, 3 mM DTT, 20% glycerol, and 1.6 mM glutathione

**Stability:** At least 6 months at  $-80^{\circ}\text{C}$ . Avoid freeze/thaw cycles. Storing diluted enzyme is not recommended, if necessary, use carrier protein (BSA 0.1 – 0.5%).

**References:**

1. Yang, Z., *et al.*, *Nat.* 2001; **414**: 317-322.
2. Baumli, S., *et al.*, *EMBO J.* 2008; **27(13)**: 1907-1918.

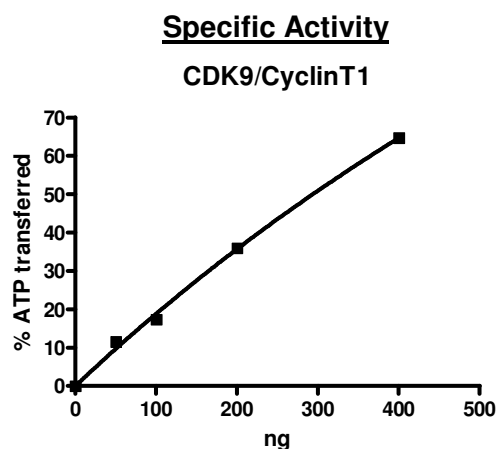
**Description:** Human cyclin-dependent kinase 9 (CDK9), also known as C-2K and cell division protein kinase 9, complexed with human cyclin T1 (CCNT1, CytT1), GenBank Accession Nos. NM\_001261 (CDK9) and NM\_001240 (CyclinT1), a.a. 2-372(end) (CDK9) and a.a. 2-726(end) (CyclinT1) each with N-terminal GST-tags, co-expressed in a baculovirus-infected Sf9 cell expression system. MW = 69 kDa (CDK9) and 107 kDa (CyclinT1).

**Specific Activity:** 26 pmol/min/ $\mu\text{g}$

**Assay Conditions:** Assay was done in a Kinase buffer using PDKtide (0.1 mg/ml) as a substrate with 10  $\mu\text{M}$  ATP at  $30^{\circ}\text{C}$  for 45 min. The amount of ATP transferred from autophosphorylation as well as substrate phosphorylation was calculated using Kinase-Glo reagent (Promega).

**Application:** Useful for the study of enzyme kinetics, screening inhibitors, and selectivity profiling.

### Quality Assurance



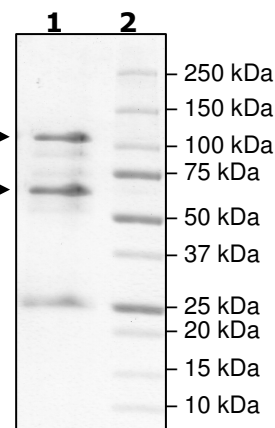
**4-20% SDS-PAGE**  
**Coomassie staining**

**Lane 1:**  
1.8  $\mu\text{g}$  CDK9/CyclinT1

**Lane 2:**  
Protein Marker

**Purity:**  $\geq 66\%$

**MW:**  
CyclinT1: 107 kDa  
CDK9: 69 kDa



OUR PRODUCTS ARE FOR RESEARCH USE ONLY. NOT FOR DIAGNOSTIC OR THERAPEUTIC USE.

To place your order, please contact us by Phone **1.858.829.3082** Fax **1.858.481.8694**

Or you can Email us at: [info@bpsbioscience.com](mailto:info@bpsbioscience.com)

Please visit our website at: [www.bpsbioscience.com](http://www.bpsbioscience.com)