



SZABO SCANDIC

Part of Europa Biosite

Produktinformation



Forschungsprodukte & Biochemikalien



Zellkultur & Verbrauchsmaterial



Diagnostik & molekulare Diagnostik



Laborgeräte & Service

Weitere Information auf den folgenden Seiten!
See the following pages for more information!



Lieferung & Zahlungsart

siehe unsere [Liefer- und Versandbedingungen](#)

Zuschläge

- Mindermengenzuschlag
- Trockeneiszuschlag
- Gefahrgutzuschlag
- Expressversand

SZABO-SCANDIC HandelsgmbH

Quellenstraße 110, A-1100 Wien

T. +43(0)1 489 3961-0

F. +43(0)1 489 3961-7

mail@szabo-scandic.com

www.szabo-scandic.com

[linkedin.com/company/szaboscandic](https://www.linkedin.com/company/szaboscandic) 



6042 Cornerstone Court W, Ste B
San Diego, CA 92121
Tel: 1.858.829.3082
Fax: 1.858.481.8694
Email: info@bpsbioscience.com

Data Sheet

PD-L1 - CHO Recombinant Cell line Cat. #: 60543

Product Description

Recombinant CHO-K1 cells constitutively expressing human PD-L1 (Programmed Cell Death 1 Ligand 1, CD274, B7 homolog 1 (B7- H1), GenBank accession #NM_014143).

Background

The binding of Programmed Cell Death Protein 1 (PD-1), a receptor expressed on activated T-cells, to its ligands, PD-L1 and PD-L2, negatively regulates immune responses. The PD-1 ligands are found on most cancers, and PD-1:PD-L1/2 interaction inhibits T cell activity and allows cancer cells to escape immune surveillance. The PD-1:PD-L1/2 pathway is also involved in regulating autoimmune responses, making these proteins promising therapeutic targets for a number of cancers, as well as multiple sclerosis, arthritis, lupus, and type I diabetes.

Applications

- Screen PD-L1 antibodies for binding affinity and biological assays.

Format

Each vial contains $\sim 2.5 \times 10^6$ cells in 1 ml of 10% DMSO

Storage

Immediately upon receipt, store in liquid nitrogen.

Mycoplasma Testing

The cell line has been screened using the PCR-based Venor[®]GeM Mycoplasma Detection kit (Sigma-Aldrich) to confirm the absence of *Mycoplasma* species.

General Culture Conditions

Thaw Medium 3 (BPS Bioscience, #60186): Ham's F-12 medium (Hyclone #SH30526.01) supplemented with 10% FBS (Life technologies #26140-079), 1% Penicillin/Streptomycin (Hyclone #SV30010.01).

Growth Medium 3D (BPS Bioscience, #79539): Thaw Medium 3 (BPS Bioscience, #60186) plus 1 mg/ml G418 (Thermo Fisher, #11811031).

OUR PRODUCTS ARE FOR RESEARCH USE ONLY. NOT FOR DIAGNOSTIC OR THERAPEUTIC USE.

To place your order, please contact us by Phone **1.858.829.3082** Fax **1.858.481.8694**

Or you can Email us at: info@bpsbioscience.com

Please visit our website at: www.bpsbioscience.com

It is recommended to quickly thaw the frozen cells from liquid nitrogen in a 37°C water-bath, transfer to a tube containing 10 ml of Thaw Medium 3 (**without Geneticin**), spin down cells, re-suspend cells in pre-warmed Thaw Medium 3 (**without Geneticin**), transfer re-suspended cells to T25 flask and culture in 37°C CO₂ incubator overnight. The next day, replace the medium with fresh Thaw Medium 3 (**without Geneticin**), and continue growing culture in a CO₂ incubator at 37°C until the cells are ready to be split. Cells should be split before they reach complete confluence. At first passage switch to Growth Medium 3D (**containing Geneticin**).

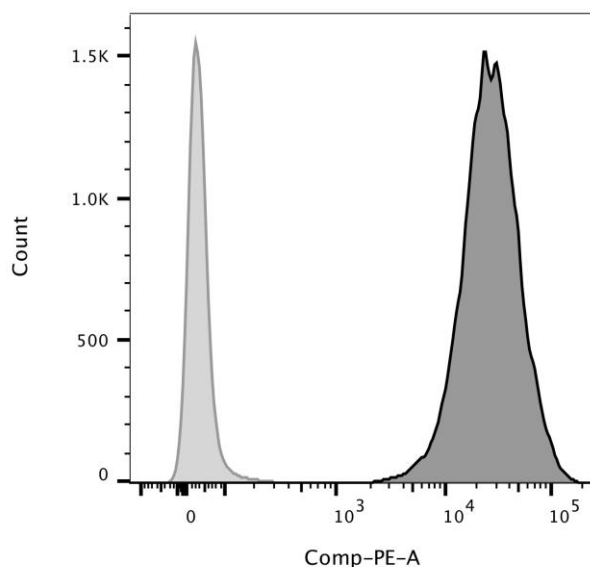
To passage the cells, rinse cells with phosphate buffered saline (PBS), detach cells from culture vessel with 0.05% Trypsin/EDTA, add Growth Medium 3D and transfer to a tube, spin down cells, re-suspend cells and seed appropriate aliquots of cell suspension into new culture vessels. Sub cultivation ration: 1:10 to 1:20 twice a week.



Cell Validation

Expression of human PD-L1 in PD-L1-CHO cells was confirmed by Western blotting and FACS.

Figure 1. FACS analysis of cell surface expression of PD-L1 in PD-L1-CHO cells.

PD-L1-CHO or parental CHO-K1 cells were stained with PE-labeled anti-PD-L1 antibody (BPS Bioscience #71128) and analyzed by FACS. Y-axis shows the cell count. X-axis shows the intensity of PE fluorescence.



	Samples	Subset	Cell Count
	Parental CHO cell + PE-anti-PD-L1 Ab	Live cells	20339
	PD-L1-CHO cell + PE-anti-PD-L1 Ab	Live cells	20014

OUR PRODUCTS ARE FOR RESEARCH USE ONLY. NOT FOR DIAGNOSTIC OR THERAPEUTIC USE.

To place your order, please contact us by Phone **1.858.829.3082** Fax **1.858.481.8694**

Or you can Email us at: info@bpsbioscience.com

Please visit our website at: www.bpsbioscience.com



6042 Cornerstone Court W, Ste B
San Diego, CA 92121
Tel: 1.858.829.3082
Fax: 1.858.481.8694
Email: info@bpsbioscience.com

Sequence

hPD-L1 sequence (Genbank accession #NM_014143)

MRIFAVFIFMTYWHLNNAFTVTVPKDLYVVEYGSNMTIECKFPVEKQLDLAALIVYWEMEDKNI
IQFVHGEEDLKVQHSSYRQRARLLKDQLSLGNAALQITDVKLQDAGVYRCMISYGGADYKRITV
KVNAPYNKINQRILVVDPVTSEHELTCQAEGYPKAEVIWTSSDHQVLSGKTTTTNSKREEKLFN
VTSTLRINTTTNEIFYCTFRRLDPEENHTAELVIPELPLAHPNERTHLVILGAILLCLGVALT
FIFRLRKGRMMDVKKCGIQDTNSKKQSDTHLEET

Related Products

Product

	<u>Cat. #</u>	<u>Size</u>
PD-1/NFAT Reporter-Jurkat cell line	60535	2 vials
TCR Activator/PD-L1-CHO cell line	60536	2 vials
NFAT Reporter – Jurkat cell line	60621	2 vials
TCR activator-CHO cell line	60539	2 vials
Anti-PD-1 Neutralizing Antibody	71120	100 µg
Anti-PD-L1 Neutralizing Antibody	71213	100 µg
Anti-PD-L1 Neutralizing Antibody, PE-labeled	71128-1	50 µg
Anti-PD-L1 Neutralizing Antibody, Biotin-labeled	71214	100 µg
TCR activator / PD-L1 expression kit	60610	500 rxns.
TCR activator / PD-L2 expression kit	60620	500 rxns.
ONE-Step™ Luciferase Assay System	60690-1	10 ml
Human PD-1 (CD279), Fc fusion	71106	100 µg
Human PD-1, FLAG-Avi-His-tag	71198	50 µg
Human PD-L1 (CD274), Fc fusion	71104-1	50 µg
Human PD-L1 (CD274), FLAG-Avi-His tag	71183	50 µg
Human PD-L2 (CD273), Fc fusion	71107	100 µg
Human PD-1, Fc fusion, Biotin-labeled	71109	50 µg
Human PD-L1, Fc fusion, Biotin-labeled	71105	50 µg

Notes

License Disclosure: Purchase of this cell line grants you with a 10-year license to use this cell line in your immediate laboratory, for research use only. This license does not permit you to share, distribute, sell, sublicense, or otherwise make the cell line available for use to other laboratories, departments, research institutions, hospitals, universities, or biotech companies. The license does not permit the use of this cell line in humans or for therapeutic or drug use. The license does not permit modification of the cell line in any way. Inappropriate use or distribution of this cell line will result in revocation of the license and result in an immediate

OUR PRODUCTS ARE FOR RESEARCH USE ONLY. NOT FOR DIAGNOSTIC OR THERAPEUTIC USE.

To place your order, please contact us by Phone **1.858.829.3082** Fax **1.858.481.8694**

Or you can Email us at: info@bpsbioscience.com

Please visit our website at: www.bpsbioscience.com



6042 Cornerstone Court W, Ste B
San Diego, CA 92121
Tel: 1.858.829.3082
Fax: 1.858.481.8694
Email: info@bpsbioscience.com

cease of sales and distribution of BPS products to your laboratory. BPS does not warrant the suitability of the cell line for any particular use, and does not accept any liability in connection with the handling or use of the cell line. Modifications of this cell line, transfer to another facility, or commercial use of the cells may require a separate license and additional fees; contact sales@bpsbioscience.com for details. Publications using this cell line should reference BPS Bioscience, Inc., San Diego.

OUR PRODUCTS ARE FOR RESEARCH USE ONLY. NOT FOR DIAGNOSTIC OR THERAPEUTIC USE.

To place your order, please contact us by Phone **1.858.829.3082** Fax **1.858.481.8694**

Or you can Email us at: [**info@bpsbioscience.com**](mailto:info@bpsbioscience.com)

Please visit our website at: [**www.bpsbioscience.com**](http://www.bpsbioscience.com)