



SZABO SCANDIC

Part of Europa Biosite

Produktinformation



Forschungsprodukte & Biochemikalien



Zellkultur & Verbrauchsmaterial



Diagnostik & molekulare Diagnostik



Laborgeräte & Service

Weitere Information auf den folgenden Seiten!
See the following pages for more information!



Lieferung & Zahlungsart

siehe unsere [Liefer- und Versandbedingungen](#)

Zuschläge

- Mindermengenzuschlag
- Trockeneiszuschlag
- Gefahrgutzuschlag
- Expressversand

SZABO-SCANDIC HandelsgmbH

Quellenstraße 110, A-1100 Wien

T. +43(0)1 489 3961-0

F. +43(0)1 489 3961-7

mail@szabo-scandic.com

www.szabo-scandic.com

[linkedin.com/company/szaboscandic](https://www.linkedin.com/company/szaboscandic) 

Data Sheet

Anti-PD-L1, PE-labeled

Recombinant, Murine/Human Monoclonal
 Anti-PD-L1

Catalog #: 71128-1

Lot #: 160323

Conc.: 2.05 mg/ml

Host Species | Isotype:

Murine/Human | IgG1κ

Formulated in: 8 mM Na phosphate pH 7.4,
 110 mM NaCl, 2.2 mM KCl and 20%
 glycerol.

Stability: Stable for at least 12 months at
 -80°C. *Protect from light. Avoid freeze/thaw
 cycles. Store diluted antibody with carrier
 protein (BSA 0.1 – 0.5%) at 4°C, stable for 2
 weeks.*

References:

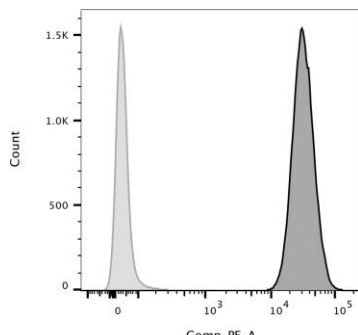
1. Freeman, G.J., *et al.*, *J. Exp. Med.*
 2000; **192(7)**: 1027-1034.
2. Dong, H., *et al.*, *Nat. Med.* 1999;
5(12):1365-1369.

Description: R-Phycoerythrin-labeled anti-
 PD-L1 recombinant murine/human antibody
 recognizing the PD-1 binding region of human
 PD-L1. This antibody does not cross-react with
 mouse PD-L1, but does cross-react with
 monkey (*M. fascicularis*) PD-L1. It has not been
 tested with other species.

Recommended Assay Conditions: For flow
 cytometry, we recommend incubating cells on
 ice for 30 minutes with 1-20 µg/ml of anti-
 human PD-L1 antibody, PE-labeled.

Purification: Protein A affinity
 chromatography from HEK293 supernatants.

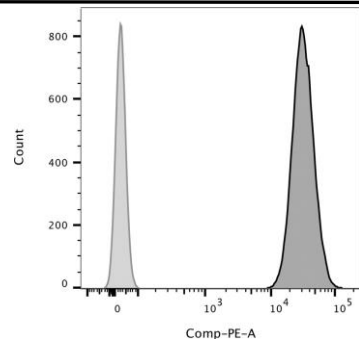
Application: Useful for labeling cells
 expressing PD-L1 for flow cytometry,
 immunofluorescence microscopy, and live cell
 imaging.



	Parental CHO cell + anti-PD-L1 Ab
	TCR activator/PD- L1-CHO cell + anti- PD-L1 Ab

Control CHO cells and PD-L1-
 expressing stable CHO cells
 (BPS Cat. #60536) were
 treated with PE anti-human
 PD-L1 antibody (left).

PD-L1-expressing stable CHO
 cells (BPS Cat. #60536) with
 or without PE Anti-human PD-
 L1 antibody (right).



	TCR activator/PD-L1- CHO cell, no anti-PD-L1 Ab
	TCR activator/PD-L1- CHO cell + anti-PD-L1 Ab

OUR PRODUCTS ARE FOR RESEARCH USE ONLY. NOT FOR DIAGNOSTIC OR THERAPEUTIC USE.

To place your order, please contact us by Phone **1.858.829.3082** Fax **1.858.481.8694**

Or you can Email us at: info@bpsbioscience.com

Please visit our website at: www.bpsbioscience.com