



# SZABO SCANDIC

Part of Europa Biosite

## Produktinformation



Forschungsprodukte & Biochemikalien



Zellkultur & Verbrauchsmaterial



Diagnostik & molekulare Diagnostik



Laborgeräte & Service

Weitere Information auf den folgenden Seiten!  
See the following pages for more information!



### Lieferung & Zahlungsart

siehe unsere [Liefer- und Versandbedingungen](#)

### Zuschläge

- Mindermengenzuschlag
- Trockeneiszuschlag
- Gefahrgutzuschlag
- Expressversand

### SZABO-SCANDIC HandelsgmbH

Quellenstraße 110, A-1100 Wien

T. +43(0)1 489 3961-0

F. +43(0)1 489 3961-7

[mail@szabo-scandic.com](mailto:mail@szabo-scandic.com)

[www.szabo-scandic.com](http://www.szabo-scandic.com)

[linkedin.com/company/szaboscandic](https://www.linkedin.com/company/szaboscandic) 

## Data Sheet

### Anti-PD-L1, PE-labeled

Recombinant, Murine/Human Monoclonal Anti-PD-L1

**Catalog #:** 71128-2

**Lot #:** 160323

**Conc.:** 2.05 mg/ml

**Host Species | Isotype:**

Murine/Human | IgG1κ

**Formulated in:** 8 mM Na phosphate pH 7.4, 110 mM NaCl, 2.2 mM KCl and 20% glycerol.

**Stability:** Stable for at least 12 months at -80°C. *Protect from light. Avoid freeze/thaw cycles. Store diluted antibody with carrier protein (BSA 0.1 – 0.5%) at 4°C, stable for 2 weeks.*

**References:**

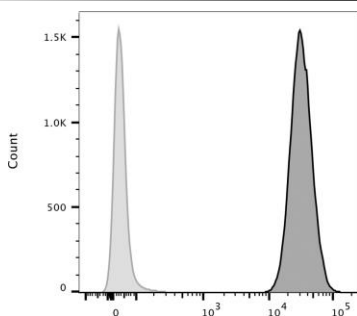
1. Freeman, G.J., *et al.*, *J. Exp. Med.* 2000; **192(7)**: 1027-1034.
2. Dong, H., *et al.*, *Nat. Med.* 1999; **5(12)**:1365-1369.

**Description:** R-Phycoerythrin-labeled anti-PD-L1 recombinant murine/human antibody recognizing the PD-1 binding region of human PD-L1. This antibody does not cross-react with mouse PD-L1, but does cross-react with monkey (*M. fascicularis*) PD-L1. It has not been tested with other species.

**Recommended Assay Conditions:** For flow cytometry, we recommend incubating cells on ice for 30 minutes with 1-20 µg/ml of anti-human PD-L1 antibody, PE-labeled.

**Purification:** Protein A affinity chromatography from HEK293 supernatants.

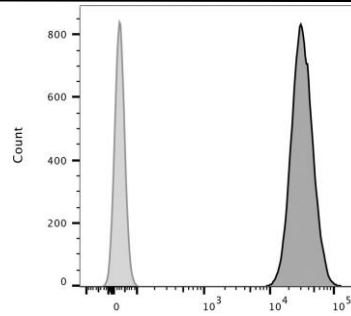
**Application:** Useful for labeling cells expressing PD-L1 for flow cytometry, immunofluorescence microscopy, and live cell imaging.



	Parental CHO cell + anti-PD-L1 Ab
	TCR activator/PD-L1-CHO cell + anti-PD-L1 Ab

Control CHO cells and PD-L1-expressing stable CHO cells (BPS Cat. #60536) were treated with PE anti-human PD-L1 antibody (left).

PD-L1-expressing stable CHO cells (BPS Cat. #60536) with or without PE Anti-human PD-L1 antibody (right).



	TCR activator/PD-L1-CHO cell, no anti-PD-L1 Ab
	TCR activator/PD-L1-CHO cell + anti-PD-L1 Ab

OUR PRODUCTS ARE FOR RESEARCH USE ONLY. NOT FOR DIAGNOSTIC OR THERAPEUTIC USE.

To place your order, please contact us by Phone **1.858.829.3082** Fax **1.858.481.8694**  
 Or you can Email us at: [info@bpsbioscience.com](mailto:info@bpsbioscience.com)  
 Please visit our website at: [www.bpsbioscience.com](http://www.bpsbioscience.com)