



SZABO SCANDIC

Part of Europa Biosite

Produktinformation



Forschungsprodukte & Biochemikalien



Zellkultur & Verbrauchsmaterial



Diagnostik & molekulare Diagnostik



Laborgeräte & Service

Weitere Information auf den folgenden Seiten!
See the following pages for more information!



Lieferung & Zahlungsart

siehe unsere [Liefer- und Versandbedingungen](#)

Zuschläge

- Mindermengenzuschlag
- Trockeneiszuschlag
- Gefahrgutzuschlag
- Expressversand

SZABO-SCANDIC HandelsgmbH

Quellenstraße 110, A-1100 Wien

T. +43(0)1 489 3961-0

F. +43(0)1 489 3961-7

mail@szabo-scandic.com

www.szabo-scandic.com

[linkedin.com/company/szaboscandic](https://www.linkedin.com/company/szaboscandic) 

Data Sheet

PD-1(PCD1)-FLAG-Avi-His-tag

Human, recombinant, C-terminal FLAG-Avi-His-tag

Catalog #: 71198

Lot #: 150702-G **Conc.:** 0.89 mg/ml

Formulated in: 8 mM phosphate pH 7.4, 110 mM NaCl, 2.2 mM KCl, and 20% glycerol

Stability: At least 6 months at -80°C . Avoid freeze/thaw cycles. Protein may be diluted to $\geq 100 \mu\text{g/ml}$ in PBS + glycerol and stored at -80°C .

References:

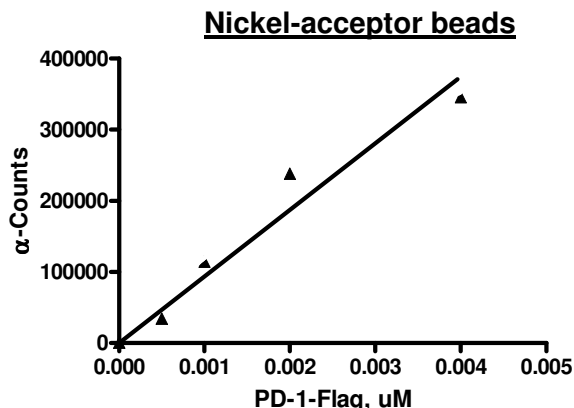
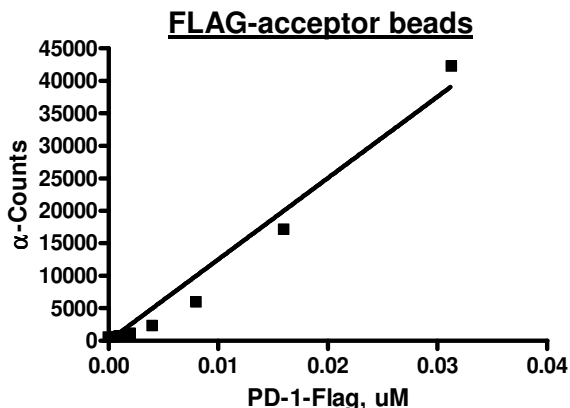
1. Shinohara, T., *et al.*, *Genomics*. 1994 Oct;**23(3)**:704-6.
2. James, E.S., *et al.*, *Genes Immun*. 2005 Aug;**6(5)**:430-7.

Description: Human secreted programmed cell death 1 (PD-1), also known as PDCD1, SLEB2, CD279 and HPD-L, GenBank Accession No. NM_005018, a.a. 25-167, with C-terminal FLAG-Avi-His-tags, MW=20 kDa, expressed in a HEK293 cell expression system. This protein runs at a higher M.W. by SDS-PAGE due to glycosylation.

Assay Conditions: 10 nM PD-L1, Biotin-labeled (BPS Cat. #71105) was mixed with varying amounts of PD-1, FLAG-tag (BPS Cat. #71198) in PD-1 Assay Buffer for 1 hr at RT. FLAG-acceptor beads (left) or Nickel-acceptor beads (right) were added and incubated for 30 min at RT followed by streptavidin-conjugated donor beads for 30 min at RT. Alpha counts were read.

Application: Useful for studying protein binding and screening small molecular inhibitors.

Quality Assurance



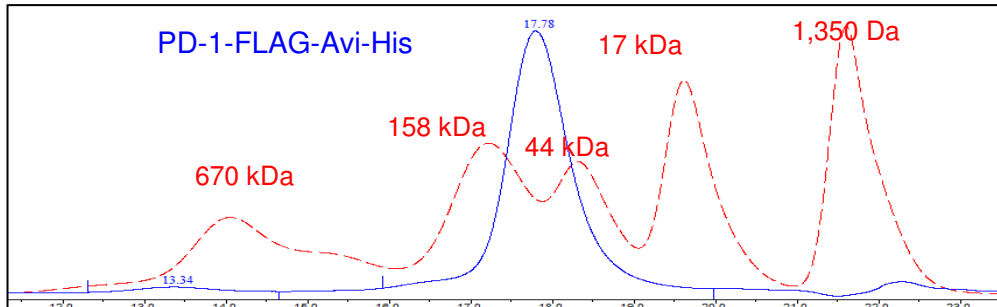
OUR PRODUCTS ARE FOR RESEARCH USE ONLY. NOT FOR DIAGNOSTIC OR THERAPEUTIC USE.

To place your order, please contact us by Phone **1.858.829.3082** Fax **1.858.481.8694**

Or you can Email us at: info@bpsbioscience.com

Please visit our website at: www.bpsbioscience.com

Gel Filtration Curve



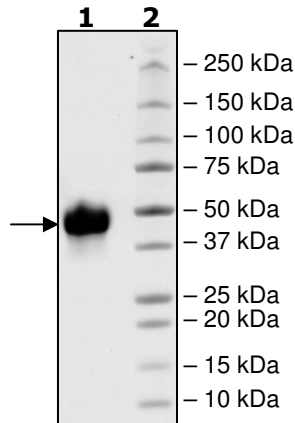
<5%
 Aggregation

**4-20% SDS-PAGE
 Coomassie staining**

Lane 1:
 3 µg PD-1

Lane 2:
 Protein Marker

MW: 20 kDa + glycans
Purity: ≥ 90%



OUR PRODUCTS ARE FOR RESEARCH USE ONLY. NOT FOR DIAGNOSTIC OR THERAPEUTIC USE.

To place your order, please contact us by Phone **1.858.829.3082** Fax **1.858.481.8694**
 Or you can Email us at: info@bpsbioscience.com
 Please visit our website at: www.bpsbioscience.com