



SZABO SCANDIC

Part of Europa Biosite

Produktinformation



Forschungsprodukte & Biochemikalien



Zellkultur & Verbrauchsmaterial



Diagnostik & molekulare Diagnostik



Laborgeräte & Service

Weitere Information auf den folgenden Seiten!
See the following pages for more information!



Lieferung & Zahlungsart

siehe unsere [Liefer- und Versandbedingungen](#)

Zuschläge

- Mindermengenzuschlag
- Trockeneiszuschlag
- Gefahrgutzuschlag
- Expressversand

SZABO-SCANDIC HandelsgmbH

Quellenstraße 110, A-1100 Wien

T. +43(0)1 489 3961-0

F. +43(0)1 489 3961-7

mail@szabo-scandic.com

www.szabo-scandic.com

[linkedin.com/company/szaboscandic](https://www.linkedin.com/company/szaboscandic) 

Data Sheet

PD-L1 (CD274) Neutralizing Antibody

Recombinant, Monoclonal Antibody
 Anti-PD-L1 (CD274)
Catalog #: 71213
Lot #: 160525 **Conc.:** 1.57 mg/ml

Formulated in: 8 mM phosphate, 110 mM NaCl, 2.2 mM KCl, pH 7.4, and 20% glycerol

Endotoxin Level: <1 EU/μg

Stability: Stable for at least 12 months at -80°C. Avoid freeze/thaw cycles. Store diluted antibody with carrier protein (BSA 0.1 – 0.5%) at 4°C, stable for 2 weeks.

References:

- Freeman, G.J., *et al.*, *J. Exp. Med.* 2000; **192(7)**: 1027-1034.
- Dong, H., *et al.*, *Nat. Med.* 1999; **5(12)**: 1365-1369.

Description: Neutralizing recombinant humanized monoclonal antibody recognizing the extracellular domain of human PD-L1 and blocking the binding of PD-L1 to PD-1. This antibody has been shown to cross-react with mouse PD-L1. No other species have been tested.

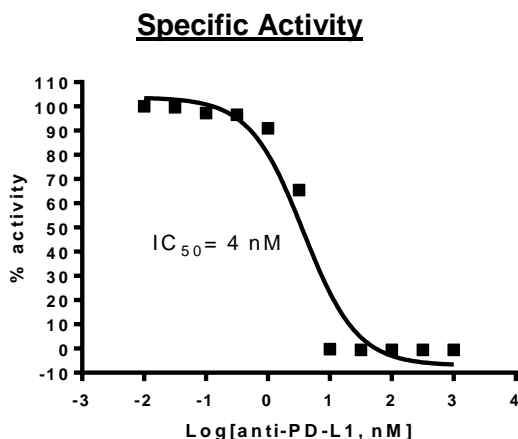
IC50: 11.5 nM using PD-1:PD-L1[Biotinylated] Inhibitor Screening Assay Kit (BPS Bioscience, Cat. #72003) and human PD-1 and PD-L1. 1.8 nM using mouse PD-L1 and mouse PD-1[Biotinylated].

Assay Conditions: Antibody was added to PD-1:PD-L1 binding assay at various concentrations. Assay was done according to BPS Cat. #72003 protocol using either human or mouse PD-1 and PD-L1 as indicated.

Purification: Protein A affinity chromatography from HEK293 supernatants.

Applications: Useful for inhibition of PD1:PD-L1 interactions

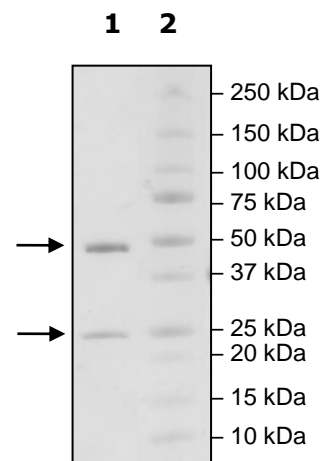
Quality Assurance



**4-20% SDS-PAGE
Coomassie staining**

Lane 1:
3μg Anti-PD-L1
Lane 2:
Protein Marker

MW:
Heavy chain 50kDa
Light chain 25kDa
Purity: ≥90%



OUR PRODUCTS ARE FOR IN VITRO RESEARCH USE ONLY. NOT FOR DIAGNOSTIC OR THERAPEUTIC USE.

To place your order, please contact us by Phone **1.858.829.3082** Fax **1.858.481.8694**

Or you can Email us at: info@bpsbioscience.com

Please visit our website at: www.bpsbioscience.com



6042 Cornerstone Court West, Suite B
San Diego, CA 92121
Tel: 1.858.829.3082
Fax: 1.858.481.8694
Email: info@bpsbioscience.com

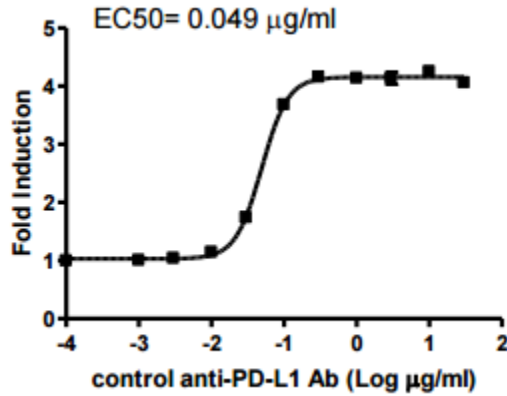


Figure 2. PD-L1 antibody was confirmed to neutralize PD-L1 mediated NFAT suppression using BPS PD-1 Reporter Cell Line (BPS Cat. #60535).

OUR PRODUCTS ARE FOR IN VITRO RESEARCH USE ONLY. NOT FOR DIAGNOSTIC OR THERAPEUTIC USE.

To place your order, please contact us by Phone **1.858.829.3082** Fax **1.858.481.8694**

Or you can Email us at: info@bpsbioscience.com

Please visit our website at: www.bpsbioscience.com