



SZABO SCANDIC

Part of Europa Biosite

Produktinformation



Forschungsprodukte & Biochemikalien



Zellkultur & Verbrauchsmaterial



Diagnostik & molekulare Diagnostik



Laborgeräte & Service

Weitere Information auf den folgenden Seiten!
See the following pages for more information!



Lieferung & Zahlungsart

siehe unsere [Liefer- und Versandbedingungen](#)

Zuschläge

- Mindermengenzuschlag
- Trockeneiszuschlag
- Gefahrgutzuschlag
- Expressversand

SZABO-SCANDIC HandelsgmbH

Quellenstraße 110, A-1100 Wien

T. +43(0)1 489 3961-0

F. +43(0)1 489 3961-7

mail@szabo-scandic.com

www.szabo-scandic.com

[linkedin.com/company/szaboscandic](https://www.linkedin.com/company/szaboscandic) 

Data Sheet

CD38, His-Tag (Human), HiP™

Human, Recombinant, C-terminal His-Tag
Catalog#: 71277
Lot#: 160816 **Conc.:** 0.21 mg/ml

Formulated in: 8 mM phosphate, pH 7.4, 110 mM NaCl, 2.2 mM KCl, and 20% glycerol.

Stability: At least 6 months at -80°C . Avoid freeze/thaw cycles. Protein may be diluted to $\geq 100 \mu\text{g/ml}$ in PBS + glycerol and stored at -80°C .

References:

1. Damle, R. *et al.*, *Blood*. 1998; **94**: 1840-1847.
2. Howard, M. *et al.*, *Science*. 1993; **262(5136)**: 1056-1059.

Description:

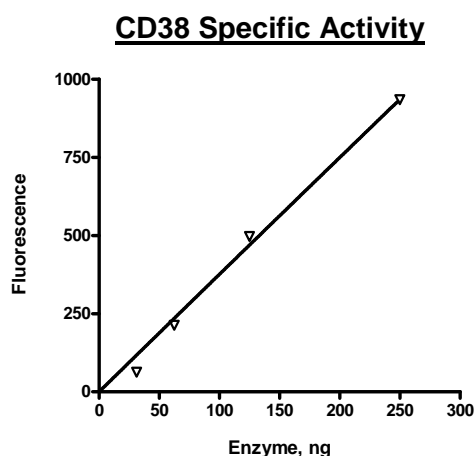
Human CD38, also known as cluster of differentiation 38 and cyclic ADP ribose hydrolase with C-terminal His-tag, GenBank Accession No. NM_001775, a.a. 43-300 expressed in a HEK293 cell expression system. MW = 31 kDa. This protein runs at a higher MW by SDS-PAGE due to glycosylation.

Assay Conditions: Add CD38 enzyme to 50 μl reaction mix containing NGD+ (Nicotinamide Guanine Dinucleotide). Incubate 4 min at room temperature. Read fluorescence ($\lambda_{\text{exc}}=300 \text{ nm}$, $\lambda_{\text{em}}=410 \text{ nm}$).

Application:

Useful for studying protein binding and for screening small molecules and antibodies.

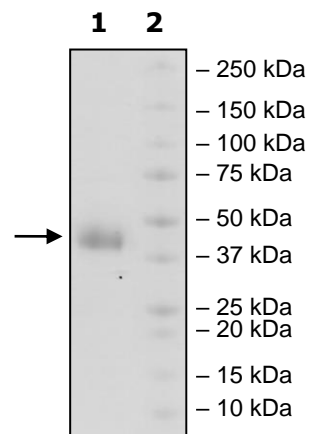
Quality Assurance



**4-20% SDS-PAGE
 Coomassie staining**

Lane 1:
 3 μg CD38
Lane 2:
 Protein Marker

MW: 31 kDa +glycans
Purity: $\geq 90\%$



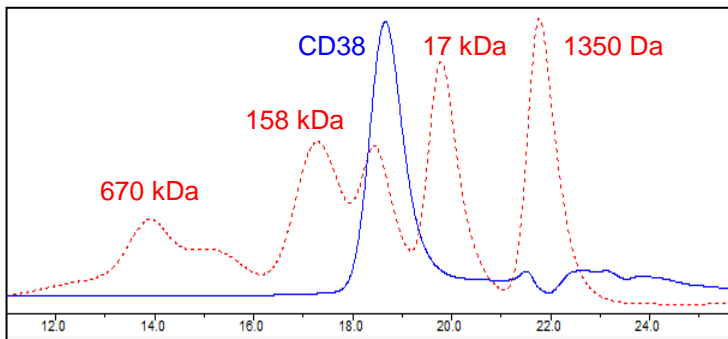
OUR PRODUCTS ARE FOR RESEARCH USE ONLY. NOT FOR DIAGNOSTIC OR THERAPEUTIC USE.

To place your order, please contact us by Phone **1.858.829.3082** Fax **1.858.481.8694**
 Or you can Email us at: info@bpsbioscience.com
 Please visit our website at: www.bpsbioscience.com



6042 Cornerstone Court W, Ste B
San Diego, CA 92121
Tel: 1.858.829.3082
Fax: 1.858.481.8694
Email: info@bpsbioscience.com

Gel Filtration Curve



<10% Aggregation

OUR PRODUCTS ARE FOR RESEARCH USE ONLY. NOT FOR DIAGNOSTIC OR THERAPEUTIC USE.

To place your order, please contact us by Phone **1.858.829.3082** Fax **1.858.481.8694**
Or you can Email us at: info@bpsbioscience.com
Please visit our website at: www.bpsbioscience.com