



SZABO SCANDIC

Part of Europa Biosite

Produktinformation



Forschungsprodukte & Biochemikalien



Zellkultur & Verbrauchsmaterial



Diagnostik & molekulare Diagnostik



Laborgeräte & Service

Weitere Information auf den folgenden Seiten!
See the following pages for more information!



Lieferung & Zahlungsart

siehe unsere [Liefer- und Versandbedingungen](#)

Zuschläge

- Mindermengenzuschlag
- Trockeneiszuschlag
- Gefahrgutzuschlag
- Expressversand

SZABO-SCANDIC HandelsgmbH

Quellenstraße 110, A-1100 Wien

T. +43(0)1 489 3961-0

F. +43(0)1 489 3961-7

mail@szabo-scandic.com

www.szabo-scandic.com

[linkedin.com/company/szaboscandic](https://www.linkedin.com/company/szaboscandic) 

Data Sheet

Anti- β -Tubulin

Mouse Monoclonal Antibody
Anti- β -Tubulin (BT7R)

Catalog #: 79468 **Lot #:** 180307

Specificity:

Recognizes native and denatured forms of β -Tubulin (~50kDa).

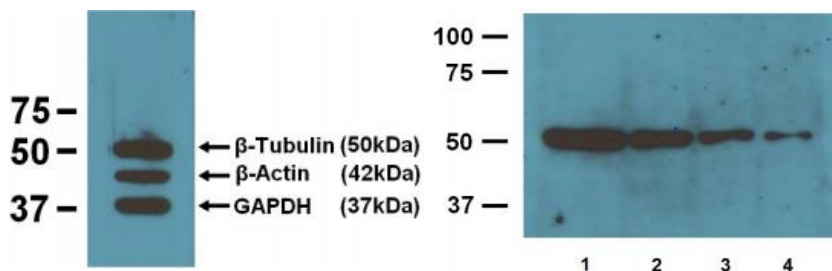
Immunogen:

β -Tubulin N-terminal peptide-KLH conjugates.

Applications:

Dot Blot, ELISA, IS, WB

Images:



Left: EBI's three loading control mAbs reacting against 10 μ g/lane of mouse brain tissue lysates. 50kDa band is Anti- β -Tubulin (BT7R) at 1:2000 dilution (0.5 μ g/mL); 42kDa band is Anti- β -Actin (BA3R) at 1:1000 dilution (1 μ g/mL); 37kDa band is Anti-GAPDH (GA1R) at 1:5000 dilution (0.2 μ g/mL). **Right:** 1:4000 (0.25 μ g/mL) Ab dilution used in WB of 10 μ g/lane (1), 5 μ g/lane (2), 2.5 μ g/lane (3), 1.25 μ g/lane (4) mouse brain tissue lysates.

Clonality | Host Species | Isotype:

BT7R | Mouse | IgG2b

Formulation:

1 mg/mL in 10mM PBS, pH 7.2, with 0.05% NaN₃

Working Conditions:

WB (with ECL): 1:2000-5,000 dilution (incubate for one hour at room temperature). For best results with other assays (e.g.: Dot, ELISA, IS, etc), please determine optimal working dilution by titration test.

Purification:

Protein A affinity chromatography from mouse ascites fluid.

Storage and Stability:

Store at -20°C for up to 2 years. Centrifuge after first thaw to maximize product recovery. Aliquot to avoid repeated freeze-thaw cycles. Store aliquots at 4°C for 1-2 weeks.

OUR PRODUCTS ARE FOR IN VITRO RESEARCH USE ONLY. NOT FOR DIAGNOSTIC OR THERAPEUTIC USE.

To place your order, please contact us by Phone **1.858.829.3082** Fax **1.858.481.8694**

Or you can Email us at: info@bpsbioscience.com

Please visit our website at: www.bpsbioscience.com