



# SZABO SCANDIC

Part of Europa Biosite

## Produktinformation



Forschungsprodukte & Biochemikalien



Zellkultur & Verbrauchsmaterial



Diagnostik & molekulare Diagnostik



Laborgeräte & Service

Weitere Information auf den folgenden Seiten!  
See the following pages for more information!



### Lieferung & Zahlungsart

siehe unsere [Liefer- und Versandbedingungen](#)

### Zuschläge

- Mindermengenzuschlag
- Trockeneiszuschlag
- Gefahrgutzuschlag
- Expressversand

### SZABO-SCANDIC HandelsgmbH

Quellenstraße 110, A-1100 Wien

T. +43(0)1 489 3961-0

F. +43(0)1 489 3961-7

[mail@szabo-scandic.com](mailto:mail@szabo-scandic.com)

[www.szabo-scandic.com](http://www.szabo-scandic.com)

[linkedin.com/company/szaboscandic](https://www.linkedin.com/company/szaboscandic) 



6042 Cornerstone Court W, Ste B  
San Diego, CA 92121  
**Tel:** 1.858.829.3082  
**Fax:** 1.858.481.8694  
**Email:** [info@bpsbioscience.com](mailto:info@bpsbioscience.com)

## **Data Sheet**

### **CD22 CHO Recombinant Cell Line (Medium Expression)**

### **Catalog #79557-M**

#### **Description**

Recombinant clonal stable CHO cell line constitutively expressing full length human CD22 protein (Genbank #NM\_001771). Surface expression of CD22 was confirmed by flow cytometry. This clonal cell line was selected for medium level expression of CD22. A clone exhibiting higher levels of CD22 expression is also available (#79557-H). Please contact BPS Bioscience for additional information.

#### **Background**

CD22, also known as Siglec-2, is expressed on the membrane of B-cells. It is reported to act as an inhibitory co-receptor of the B-cell receptor to control the body's B-cell response. In 2017 the FDA approved inotuzumab ozogamicin (Besponsa), an antibody-drug conjugate targeting CD22, for patients with B-cell acute lymphoblastic leukemia (ALL). Additional therapies targeting CD22 are under evaluation.

#### **Application**

Useful for screening and validating antibodies against CD22 and different CD22 CAR-T for immunotherapy research and drug discovery. Also useful for CD22 binding assays to screen for CD22 ligands.

#### **Host Cell**

CHO K1 cell line, Chinese Hamster Ovary

#### **Format**

Each vial contains ~ 2.5 x 10<sup>6</sup> cells in 1 ml of Thaw Media + 10% DMSO.

#### **Storage**

Store in liquid nitrogen immediately upon receipt.

OUR PRODUCTS ARE FOR RESEARCH USE ONLY. NOT FOR DIAGNOSTIC OR THERAPEUTIC USE.

To place your order, please contact us by Phone **1.858.829.3082** Fax **1.858.481.8694**

Or you can Email us at: [\*\*info@bpsbioscience.com\*\*](mailto:info@bpsbioscience.com)

Please visit our website at: [\*\*www.bpsbioscience.com\*\*](http://www.bpsbioscience.com)



6042 Cornerstone Court W, Ste B  
San Diego, CA 92121  
**Tel:** 1.858.829.3082  
**Fax:** 1.858.481.8694  
**Email:** [info@bpsbioscience.com](mailto:info@bpsbioscience.com)

### Cell Culture

**Thaw Medium 3 (BPS Bioscience, #60186):** Ham's F-12 medium (Hyclone #SH30526.01) supplemented with 10% FBS (Life Technologies #26140-079), 1% Penicillin/Streptomycin (Hyclone #SV30010.01).

**Growth Medium 3D (BPS Bioscience, #79539):** Thaw Medium 3 (BPS Bioscience, #60186) plus 1 mg/ml G418 (Thermo Fisher, #11811031).

### Recommended Culture Condition

Thawing cells: Prepare a 15 ml conical tube with 10 ml of pre-warmed Thaw Medium 3 (**no G418**). Quickly thaw cells in a 37°C water bath with constant and slow agitation. Clean the outside of the vial with 70% ethanol and immediately transfer the entire content to Thaw Medium 3 (**no G418**). Avoid pipetting up and down, and gently rock the conical tube.

Spin the cells down at 150 x g for 5 minutes. Discard the medium and re-suspend the cell pellet in fresh Thaw Medium 3 (**no G418**). Transfer the entire content to a T75 flask to distribute the cells. Incubate the cells in a humidified 37°C incubator with 5% CO<sub>2</sub>. After 48-72 hours of incubation, change to fresh Thaw Medium 3 (**no G418**), without disturbing the attached cells. Switch to Growth Medium D at the first passage.

*Subculture:* When cells reach 90% confluency, remove the medium and wash twice with PBS (without magnesium or calcium). Treat cells with 1 ml of 0.25% trypsin/EDTA and incubate for 2-3 minutes at 37°C. After confirming cell detachment by light microscopy, add 9 ml pre-warmed medium and gently pipette up and down to dissociate cell clumps. Dispense 1 ml of the cell suspension into a new T75 flask containing 9 ml pre-warmed media. Incubate cells in a humidified 37°C incubator with 5% CO<sub>2</sub>. Cells should be split twice per week at a 1:10 split ratio. Freeze cells in Thaw Medium 3 + 10% DMSO. Cells have been demonstrated to be stable for at least 15 passages; BPS recommends preparing frozen stocks at an early passage.

### Mycoplasma Testing

This cell line has been screened using the Quick Test Mycoplasma Detection Kit (Biotool.com, #B39032) to confirm the absence of Mycoplasma contamination.

### Application References

1. Poe J, *et al.* CD22 and Siglec-G in B cell function and tolerance. *Trends Immunol.* 2012 Aug; **33(8)**:413-420.
2. Dorner T, *et al.* The mechanistic impact of CD22 engagement with epratuzumab on B cell function: Implications for the treatment of systemic lupus erythematosus. *Autoimmunity Reviews.* 2015 **14**:1079-1086.
3. Wei G., *et al.* Novel immunotherapies for adult patients with B-lineage acute lymphoblastic leukemia. *Journal of Hematology and Oncology.* 2017 **10**:1-13.

OUR PRODUCTS ARE FOR RESEARCH USE ONLY. NOT FOR DIAGNOSTIC OR THERAPEUTIC USE.  
To place your order, please contact us by Phone **1.858.829.3082** Fax **1.858.481.8694**

Or you can Email us at: [info@bpsbioscience.com](mailto:info@bpsbioscience.com)

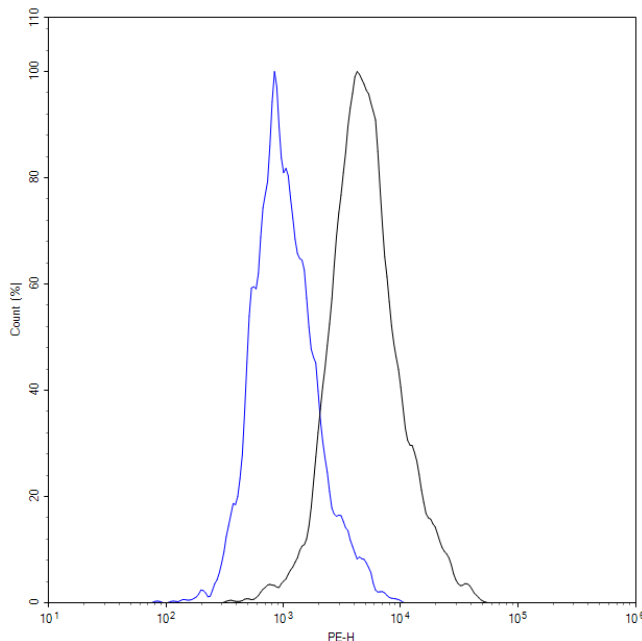
Please visit our website at: [www.bpsbioscience.com](http://www.bpsbioscience.com)

**Vector and Sequence**

Human CD22 (NM\_001771) was cloned into pIRESneo.

TYRALDGDLESFILFHNPEYNKNTSKFDGTRLYESTKDGKVPSEQKRVQFLGDKNKNCTLSIHP  
 VHLNDSGQLGLRMESKTEKWMERIHLNVSERPFPPHIQLPPEIQESQEVTLTCLLNFSYGYPI  
 QLQWLLEGVPMRQAAVTSTSLTIKSVFTRSELKFSQWSSHGKIVTCQLQDADGKFLSNDTVQ  
 LNVKHTPKLEIKVTPSDAIVREGDSVTMTCEVSSSNPEYTTVSWLKDGTSLKKQNTFTLNLREV  
 TKDQSGKYCCQVSNVGPGRSEEVFLQVQYAPEPSTVQILHSPAVEGSQVEFLCMSLANPLP  
 TNYTWYHNGKEMQGRTEEKVHIPKILPWHAGTYSCVAENILGTGQRGPGAELDVQYPPKKVTT  
 VIQNPMPPIREGDTVTLSCNYNSSNPSVTRYEWKPHGAWEEPVLGVLKIQNVGWDNTTIACAAC  
 NSWCSWASPVALNVQYAPRDVVRKIKPLSEIHSNSVSLQCDFSSSHPKEVQFFWEKNGRL  
 LGKESQLNFDISPEDAGSYSCWVNNSIGQTASKAWTLEVLYAPRRLRVSMSPGDQVMGKS  
 ATLTCESDANPPVSHYTWFDWNNQSLPYHSQKLRLEPVKVQHSGAYWCQGTNSVGKGRSPL  
 STLTVYYSPETIGRRVAVGLGSCLAAILAICGLKLRRWKRTQSQQGLQENSSGQSFFVRNKK  
 VRRAPLSEGPLSLGCYNPMMEDGISYTTLRFPEMNIPRTGDAESSEMQRPPPDCDDTDTYSA  
 LHKRQVGDYENVIPDFPEDEGIHYSELIQFGVGERPQAQENVVDYVILKH

**Quality Assurance**



**Figure 1. Expression of CD22 validated by flow cytometry.** Flow cytometry using PE-conjugated anti-human CD22 antibody (Biolegend, #302506) detects CD22 on the surface of CD22 CHO Recombinant Cell Line, #79557-M. (CD22 CHO, black; CHO parental, blue).

OUR PRODUCTS ARE FOR RESEARCH USE ONLY. NOT FOR DIAGNOSTIC OR THERAPEUTIC USE.  
 To place your order, please contact us by Phone **1.858.829.3082** Fax **1.858.481.8694**  
 Or you can Email us at: [info@bpsbioscience.com](mailto:info@bpsbioscience.com)  
 Please visit our website at: [www.bpsbioscience.com](http://www.bpsbioscience.com)



6042 Cornerstone Court W, Ste B  
San Diego, CA 92121  
**Tel:** 1.858.829.3082  
**Fax:** 1.858.481.8694  
**Email:** [info@bpsbioscience.com](mailto:info@bpsbioscience.com)

**License Disclosure:** Purchase of this cell line grants you with a 10-year license to use this cell line in your immediate laboratory, for research use only. This license does not permit you to share, distribute, sell, sublicense, or otherwise make the cell line available for use to other laboratories, departments, research institutions, hospitals, universities, or biotech companies. The license does not permit the use of this cell line in humans or for therapeutic or drug use. The license does not permit modification of the cell line in any way. Inappropriate use or distribution of this cell line will result in revocation of the license and result in an immediate cease of sales and distribution of BPS products to your laboratory. BPS does not warrant the suitability of the cell line for any particular use and does not accept any liability in connection with the handling or use of the cell line. Modifications of this cell line, transfer to another facility, or commercial use of the cells may require a separate license and additional fees; contact [sales@bpsbioscience.com](mailto:sales@bpsbioscience.com) for details. Publications using this cell line should reference BPS Bioscience, Inc., San Diego.

### **Related Products**

<b>Product</b>	<b>Cat. #</b>	<b>Size</b>
Growth Medium 3D	79539	500 ml
Thaw Medium 3	60186	100, 500ml
CD22, Fc-fusion (IgG1), Avi-Tag HiP™	79464	100 µg
CD22, Fc-fusion (IgG1), Avi-Tag HiP™	79466	50 µg
CD22 CHO Recombinant Cell Line (High Expression)	79557-H	2 vials
BCMA-CHO Recombinant Cell Line (Medium Expression)	79500-M	2 vials
BCMA-CHO Recombinant Cell Line (High Expression)	79500-H	2 vials
BCMA-CHO Recombinant Cell Line (Low Expression)	79500-L	2 vials

OUR PRODUCTS ARE FOR RESEARCH USE ONLY. NOT FOR DIAGNOSTIC OR THERAPEUTIC USE.  
To place your order, please contact us by Phone **1.858.829.3082** Fax **1.858.481.8694**

Or you can Email us at: [\*\*info@bpsbioscience.com\*\*](mailto:info@bpsbioscience.com)

Please visit our website at: [\*\*www.bpsbioscience.com\*\*](http://www.bpsbioscience.com)