



SZABO SCANDIC

Part of Europa Biosite

Produktinformation



Forschungsprodukte & Biochemikalien



Zellkultur & Verbrauchsmaterial



Diagnostik & molekulare Diagnostik



Laborgeräte & Service

Weitere Information auf den folgenden Seiten!
See the following pages for more information!



Lieferung & Zahlungsart

siehe unsere [Liefer- und Versandbedingungen](#)

Zuschläge

- Mindermengenzuschlag
- Trockeneiszuschlag
- Gefahrgutzuschlag
- Expressversand

SZABO-SCANDIC HandelsgmbH

Quellenstraße 110, A-1100 Wien

T. +43(0)1 489 3961-0

F. +43(0)1 489 3961-7

mail@szabo-scandic.com

www.szabo-scandic.com

[linkedin.com/company/szaboscandic](https://www.linkedin.com/company/szaboscandic) 



6042 Cornerstone Court W, Ste B
San Diego, CA 92121
Tel: 1.858.829.3082
Fax: 1.858.481.8694
Email: info@bpsbioscience.com

Data Sheet

CD19 CHO Recombinant Cell Line (Medium Expression)

Catalog #79561-M

Description

Recombinant clonal stable CHO cell line constitutively expressing full length human CD19 protein, also known as B4 or CVID3, (Genbank #NM_001770). Surface expression of CD19 was confirmed by flow cytometry. Each stable clonal cell line was selected for different levels of CD19 expression (High, Medium, Low) to mimic different stages of cancer target cells with various CD19 expression levels.

Background

B-lymphocyte antigen CD19 (Cluster of Differentiation 19), also known as B-Lymphocyte Surface Antigen B4 and CVID3, is a transmembrane protein expressed in follicular dendritic cells and all B lineage cells, except plasma cells. CD19 plays two major roles in human B cells. It acts as an adaptor protein to recruit cytoplasmic signaling proteins to the membrane and it works within the CD19/CD21 complex to decrease the threshold for B cell receptor signaling pathways. Due to its presence on all B cells, it is a biomarker for B lymphocyte development and lymphoma diagnosis and can be utilized as a target for leukemia immunotherapies. CD19-targeted therapies based on T cells that express CD19-specific chimeric antigen receptors (CARs) have been utilized for their antitumor abilities in patients with CD19+ lymphoma and leukemia, such as Non-Hodgkins Lymphoma (NHL), CLL and ALL.

Application

1. Useful as CD19-expressing target cells in co-culture assay with CD19-CAR-T cell, for both CD19-specific cell killing assay and cytokine production assay.
2. Useful for screening and validating antibodies against CD19 and anti-CD19 CAR-T for immunotherapy research and drug discovery.
3. Useful for CD19 binding assays to screening for CD19 ligands.

Host Cell

CHO K1 cell line, Chinese Hamster Ovary

Format

Each vial contains ~ 2 x 10⁶ cells in 1 ml of 10% DMSO in FBS.

Storage

Store in liquid nitrogen immediately upon receipt.

OUR PRODUCTS ARE FOR RESEARCH USE ONLY. NOT FOR DIAGNOSTIC OR THERAPEUTIC USE.
To place your order, please contact us by Phone **1.858.829.3082** Fax **1.858.481.8694**
Or you can Email us at: [**info@bpsbioscience.com**](mailto:info@bpsbioscience.com)
Please visit our website at: [**www.bpsbioscience.com**](http://www.bpsbioscience.com)



6042 Cornerstone Court W, Ste B
San Diego, CA 92121
Tel: 1.858.829.3082
Fax: 1.858.481.8694
Email: info@bpsbioscience.com

Cell Culture

Thaw Medium 3 (BPS Bioscience, #60186): Ham's F-12 medium (Hyclone #SH30526.01) supplemented with 10% FBS (Life technologies #26140-079), 1% Penicillin/Streptomycin (Hyclone #SV30010.01).

Growth Medium 3D (BPS Bioscience, #79539): Thaw Medium 3 (BPS Bioscience, #60186) plus 1 mg/ml G418 (Thermo Fisher, #11811031).

Recommended Culture Condition

Frozen Cells: Prepare a 50 ml conical tube with 10 ml of pre-warmed Thaw Medium 3 (**no G418**). Quickly thaw cells in a 37°C water bath with constant and slow agitation. Clean the outside of the vial with 70% ethanol and immediately transfer the entire content to Thaw Medium 3 (**no G418**). Avoid pipetting up and down, and gently rock the conical tube.

Spin the cells down at 150 x g for 5 minutes. Discard the medium and re-suspend the cell pellet in fresh Thaw Medium 3 (**no G418**). Transfer the entire content to a T25 flask to distribute the cells. Incubate the cells in a humidified 37°C incubator with 5% CO₂. After 48-72 hours of incubation, change to fresh Thaw Medium 3 (**no G418**), without disturbing the attached cells. Continue to change the medium every 2-3 days until the cells reach desired confluency. If slow cell growth occurs during resuscitation, increase FBS to 15% for the first week of culture. Switch to Growth Medium 3D after the first passage.

Subculture: When cells reach 90% confluency, remove the medium and GENTLY wash once with PBS (without Magnesium or Calcium). These cells are loosely adherent and detach easily so do not re-suspend the PBS directly onto the cell surface. Treat cells with 2 ml of 0.25% trypsin/EDTA and incubate for 2-3 minutes at 37°C. After confirming cell detachment by light microscopy, add 10 ml pre-warmed medium and gently pipette up and down to dissociate cell clumps. Transfer cells to a 15 ml conical tube and centrifuge at 200 x g for 5 minutes. Remove the medium and re-suspend cells in 10 ml of pre-warmed Growth Medium 3D. Dispense 5 ml of the cell suspension into a new T75 flask containing 20 ml pre-warmed media. Incubate cells in a humidified 37°C incubator with 5% CO₂. Freeze cells in freezing medium (10% DMSO in FBS) when cells reach 90% confluency. Cells have been demonstrated to be stable for at least 15 passages; BPS recommends preparing frozen stocks at an early passage so cells are not used beyond passage 20.

Mycoplasma Testing

This cell line has been screened using the MycoAlert™ Mycoplasma Detection Kit (Lonza, #LT07-118) to confirm the absence of Mycoplasma contamination. MycoAlert Assay Control Set (Lonza, #LT07-518) was used as a positive control.

Application References

1. Tedder TF, *et al.* Isolation of cDNAs encoding the CD19 antigen of human and mouse B lymphocytes. A new member of the immunoglobulin superfamily. *J. Immunol.* 1989 Jul 15; **143**(2):712

OUR PRODUCTS ARE FOR RESEARCH USE ONLY. NOT FOR DIAGNOSTIC OR THERAPEUTIC USE.
To place your order, please contact us by Phone **1.858.829.3082** Fax **1.858.481.8694**

Or you can Email us at: info@bpsbioscience.com

Please visit our website at: www.bpsbioscience.com

2. Kemeng W, *et al.* CD19: a biomarker for B cell development, lymphoma diagnosis and therapy.
Experimental Hematology & Oncology 2012 **1**:36
3. Michel S. CD19 CAR T Cells.
Cell 2017 Dec 14; **171(7)**:1471

Vector and Sequence

Human CD19 (NM_001770) was cloned into pIRESneo.

MPPRLLFLLFLTPMEVRPEEPLVVKVEEGDNAVLQCLKGTSDGPTQQLTWSRESPLKPFLLK
 LSLGLPGLGIHMRPLAIWLFIFNVSQQMGGFYLCQPGPPSEKAWQPGWTVNVEGSGELFRWN
 VSDLGGLGCGLKNRSSEGPSSPSGKLMSPKLYVWAKDRPEIWEGEPPCLPPRDSLNSLSQD
 LTMAPGSTLWLSCGVPPDSVSRGPLSWTHVHPKGPKSLLSLELKDDRPARDMWVMMETGLLLP
 RATAQDAGKYYCHRGNTMSFHLEITARPVLWHWLLRTGGWKVSAVTLAYLIFCLCSLVGILHL
 QRALVLRKRKRMTDPTRRFFKVTPPP GSGPQNQYGNVLSLPTPTSGLGRAQRWAAGLGGT
 APSYGNPSSDVQADGALGSRSPPGVGP EEEEEGEGYEEP DSEEDSEFYENDSNLGQDQLSQD
 GSGYENPEDEPLGPEDEDSFSNAESYENEDEELTQPVARTMDFLSPHGSAWDPSREATSLGS
 QSYEDMRGILYAAPQLRSIRGQPGPNHEEDADSYENMDNPDGPDPAWGGGGRMGTWSTR&

Quality Assurance

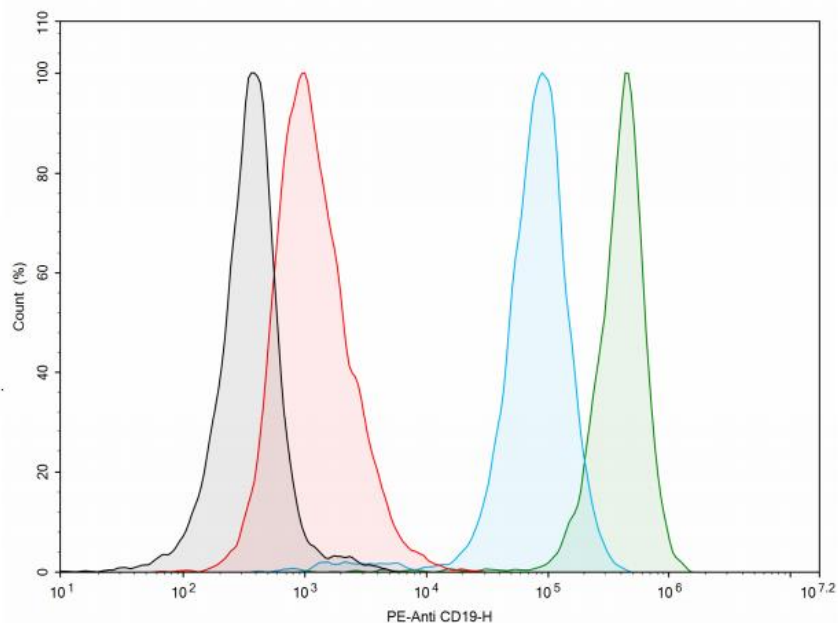


Figure 1. Expression of CD19 validated by flow cytometry. Flow cytometry using PE-conjugated anti-human CD19 antibody (Biolegend, #302207) detects CD19 surface expression of CD19 CHO Recombinant Cell Lines with different expression levels: #79561-H, high expresser: green; #79561-M, medium expresser: blue; #79561-L, low expresser: red; WT CHO negative control: black.

OUR PRODUCTS ARE FOR RESEARCH USE ONLY. NOT FOR DIAGNOSTIC OR THERAPEUTIC USE.
 To place your order, please contact us by Phone **1.858.829.3082** Fax **1.858.481.8694**

Or you can Email us at: info@bpsbioscience.com

Please visit our website at: www.bpsbioscience.com



6042 Cornerstone Court W, Ste B
San Diego, CA 92121
Tel: 1.858.829.3082
Fax: 1.858.481.8694
Email: info@bpsbioscience.com

License Disclosure: Purchase of this cell line grants you with a 10-year license to use this cell line in your immediate laboratory, for research use only. This license does not permit you to share, distribute, sell, sublicense, or otherwise make the cell line available for use to other laboratories, departments, research institutions, hospitals, universities, or biotech companies. The license does not permit the use of this cell line in humans or for therapeutic or drug use. The license does not permit modification of the cell line in any way. Inappropriate use or distribution of this cell line will result in revocation of the license and result in an immediate cease of sales and distribution of BPS products to your laboratory. BPS does not warrant the suitability of the cell line for any particular use, and does not accept any liability in connection with the handling or use of the cell line. Modifications of this cell line, transfer to another facility, or commercial use of the cells may require a separate license and additional fees; contact sales@bpsbioscience.com for details. Publications using this cell line should reference BPS Bioscience, Inc., San Diego.

Related Products

Product	Cat. #	Size
CD19 CHO Recombinant Cell Line (High Expression)	79561-H	2 vials
CD19 CHO Recombinant Cell Line (Low Expression)	79561-L	2 vials
Human CD19, Fc-fusion (IgG1), Avi-Tag, Biotin-Labeled HiP™	79475	50 µg
Human CD19, Fc-Fusion, Avi-Tag HiP™	79472	50 µg
BCMA— CHO Recombinant Cell Line (Medium Expression)	79500-M	2 vials
BCMA— CHO Recombinant Cell Line (Low Expression)	79500-L	2 vials

OUR PRODUCTS ARE FOR RESEARCH USE ONLY. NOT FOR DIAGNOSTIC OR THERAPEUTIC USE.

To place your order, please contact us by Phone **1.858.829.3082** Fax **1.858.481.8694**

Or you can Email us at: info@bpsbioscience.com

Please visit our website at: www.bpsbioscience.com