



# SZABO SCANDIC

Part of Europa Biosite

## Produktinformation



Forschungsprodukte & Biochemikalien



Zellkultur & Verbrauchsmaterial



Diagnostik & molekulare Diagnostik



Laborgeräte & Service

Weitere Information auf den folgenden Seiten!  
See the following pages for more information!



### Lieferung & Zahlungsart

siehe unsere [Liefer- und Versandbedingungen](#)

### Zuschläge

- Mindermengenzuschlag
- Trockeneiszuschlag
- Gefahrgutzuschlag
- Expressversand

### SZABO-SCANDIC HandelsgmbH

Quellenstraße 110, A-1100 Wien

T. +43(0)1 489 3961-0

F. +43(0)1 489 3961-7

[mail@szabo-scandic.com](mailto:mail@szabo-scandic.com)

[www.szabo-scandic.com](http://www.szabo-scandic.com)

[linkedin.com/company/szaboscandic](https://www.linkedin.com/company/szaboscandic) 



6042 Cornerstone Court West, Suite B  
San Diego, CA 92121  
Tel: 1.858.829.3082  
Fax: 1.858.481.8694  
Email: [info@bpsbioscience.com](mailto:info@bpsbioscience.com)

## **Data Sheet**

### **Western ECL Substrate**

**Catalog #: 79572**

**Description:** This substrate is ideal for quick, sensitive chemiluminescent detection of horseradish peroxidase (HRP). It's particularly useful for detecting HRP-labeled secondary antibodies or streptavidin-HRP in immunoblotting applications.

**Applications:** Western blots

**Storage:** Room temperature

**Western Blot Assay Protocol:**

1. After final wash of your membrane, prepare the fresh ECL substrate solution by mixing the equal volume of Solution A and Solution B. *Note: It is highly recommended to prepare the substrate immediately before use. Prepare only the amount required for the assay.*
2. Carefully apply the substrate solution onto the membrane.
3. Drain excess substrate solution and expose the membrane to the imaging system.

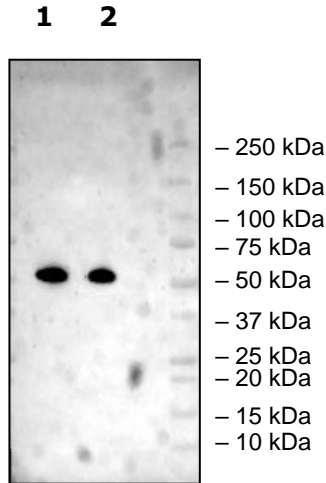
OUR PRODUCTS ARE FOR RESEARCH USE ONLY. NOT FOR DIAGNOSTIC OR THERAPEUTIC USE.

To place your order, please contact us by Phone **1.858.829.3082** Fax **1.858.481.8694**

Or you can Email us at: [info@bpsbioscience.com](mailto:info@bpsbioscience.com)

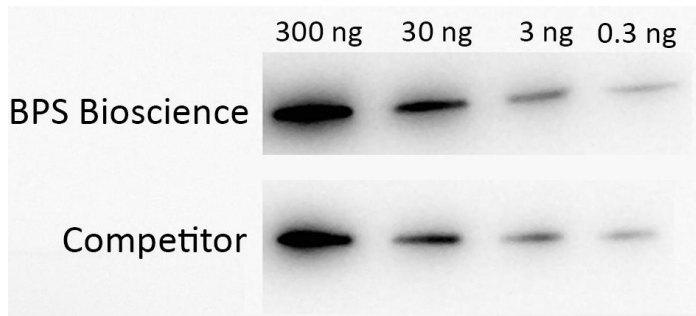
Please visit our website at: [www.bpsbioscience.com](http://www.bpsbioscience.com)

**Quality Assurance:**

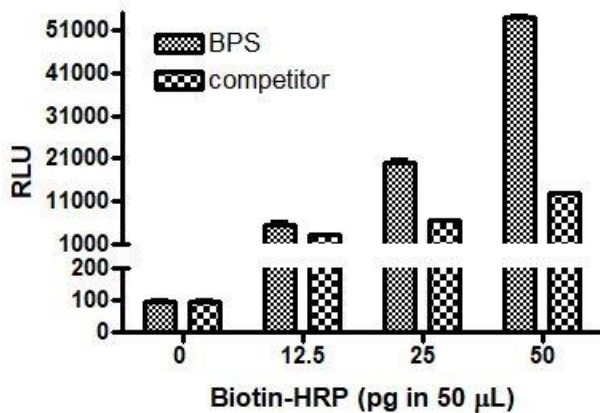


**Figure 1: Acetylated Tubulin from Tissue**

7.5 µg/well of total proteins from mouse spleen tissue samples were analyzed using an anti-acetyl tubulin antibody and an HRP conjugated secondary antibody (exposure time: 1 minute)



**Figure 2:** Purified recombinant mouse GST-PTP1B was analyzed by an anti-GST antibody and an HRP-conjugated secondary antibody (exposure time: 1 minute)



**Figure 3: Acetylated Tubulin from Tissue**

Biotin-HRP (Pierce) was diluted in PBS and coated onto the BPS Neutravidin plate for 30 min at room temperature. After washing 5 times with PBST, 100 µl of ECL substrate mixtures were added and read luminescence using a microplate reader.