



SZABO SCANDIC

Part of Europa Biosite

Produktinformation



Forschungsprodukte & Biochemikalien



Zellkultur & Verbrauchsmaterial



Diagnostik & molekulare Diagnostik



Laborgeräte & Service

Weitere Information auf den folgenden Seiten!
See the following pages for more information!



Lieferung & Zahlungsart

siehe unsere [Liefer- und Versandbedingungen](#)

Zuschläge

- Mindermengenzuschlag
- Trockeneiszuschlag
- Gefahrgutzuschlag
- Expressversand

SZABO-SCANDIC HandelsgmbH

Quellenstraße 110, A-1100 Wien

T. +43(0)1 489 3961-0

F. +43(0)1 489 3961-7

mail@szabo-scandic.com

www.szabo-scandic.com

[linkedin.com/company/szaboscandic](https://www.linkedin.com/company/szaboscandic) 



6042 Cornerstone Court W, Ste B
San Diego, CA 92121
Tel: 1.858.829.3082
Fax: 1.858.481.8694
Email: info@bpsbioscience.com

Data Sheet

HER2 (ERBB2) CHO Recombinant Cell Line (High Expression) Catalog #79612-H

Background

Receptor tyrosine-protein kinase erbB-2 (HER2 or CD340) is a protein that in humans is encoded by the *ERBB2* gene. Over-expression of this oncogene has been shown to play an important role in the development and progression of certain aggressive types of breast cancer. HER2 over-expression is also known to occur in ovarian, stomach, adenocarcinoma of the lung, aggressive forms of uterine cancer and gastric cancer. Signaling through the ErbB family of receptors promotes cell proliferation and opposes apoptosis, and therefore must be tightly regulated to prevent uncontrolled cell growth from occurring.

Description

Recombinant clonal stable CHO cell line constitutively expressing full length human ERBB2 protein (Genbank NM_004448.2). Surface expression of ERBB2 was confirmed by flow cytometry. Each stable clonal cell line was selected for different levels of ERBB2 expression (High, Medium, Low) to mimic different stages of cancer target cells with various ERBB2 expression levels.

Application

- Screen for activators or inhibitors of ERBB2 antibody-mediated cell signaling for immunotherapy research and drug discovery.
- Characterize ERBB2 antibodies and ligands for binding assay.

Host Cell

CHO K1 cell line, Chinese Hamster Ovary

Format

Each vial contains ~ 2 x 10⁶ cells in 1 ml of Thaw Media + 10% DMSO.

Storage

Store in liquid nitrogen immediately upon receipt.

Mycoplasma Testing

This cell line has been screened using the Quick Test Mycoplasma Detection Kit (Biotool.com, #B39032) to confirm the absence of Mycoplasma contamination.

OUR PRODUCTS ARE FOR RESEARCH USE ONLY. NOT FOR DIAGNOSTIC OR THERAPEUTIC USE.

To place your order, please contact us by Phone **1.858.829.3082** Fax **1.858.481.8694**

Or you can Email us at: info@bpsbioscience.com

Please visit our website at: www.bpsbioscience.com



6042 Cornerstone Court W, Ste B
San Diego, CA 92121
Tel: 1.858.829.3082
Fax: 1.858.481.8694
Email: info@bpsbioscience.com

Cell Culture

Thaw Medium 3 (BPS Bioscience, #60186): Ham's F-12 medium (Hyclone #SH30526.01) supplemented with 10% FBS (Life Technologies #26140-079), 1% Penicillin/Streptomycin (Hyclone #SV30010.01).

Growth Medium 3B (BPS Bioscience, #79529): Thaw Medium 3 (BPS Bioscience, #60186) plus 500 µg/ml Hygromycin (Thermo Fisher, #10687010).

Recommended Culture Condition

Thawing cells: Prepare a 15 ml conical tube with 10 ml of pre-warmed Thaw Medium 3 (**no hygromycin**). Quickly thaw cells in a 37°C water bath with constant and slow agitation. Clean the outside of the vial with 70% ethanol and immediately transfer the entire content to Thaw Medium 3 (**no hygromycin**). Avoid pipetting up and down, and gently rock the conical tube.

Spin the cells down at 150 x g for 5 minutes. Discard the medium and re-suspend the cell pellet in fresh Thaw Medium 3 (**no hygromycin**). Transfer the entire content to a T75 flask to distribute the cells. Incubate the cells in a humidified 37°C incubator with 5% CO₂. After 48-72 hours of incubation, change to fresh Thaw Medium 3 (**no hygromycin**), without disturbing the attached cells. Switch to Growth Medium 3B (**with hygromycin**) at the first passage.

Subculture: When cells reach 90% confluency, remove the medium and wash twice with PBS (without magnesium or calcium). Treat cells with 1 ml of 0.25% trypsin/EDTA and incubate for 3 minutes at 37°C. After confirming cell detachment by light microscopy, add 10 ml pre-warmed medium and gently pipette up and down to dissociate cell clumps. Dispense 1 ml of the cell suspension into a new T75 flask containing 14 ml pre-warmed Growth Medium 3B (**with hygromycin**). Incubate cells in a humidified 37°C incubator with 5% CO₂. Cells should be split twice per week at a 1:10 split ratio. Freeze cells in Thaw Medium 3 + 10% DMSO. Cells have been demonstrated to be stable for at least 15 passages; BPS recommends preparing frozen stocks at an early passage.

OUR PRODUCTS ARE FOR RESEARCH USE ONLY. NOT FOR DIAGNOSTIC OR THERAPEUTIC USE.

To place your order, please contact us by Phone **1.858.829.3082** Fax **1.858.481.8694**

Or you can Email us at: info@bpsbioscience.com

Please visit our website at: www.bpsbioscience.com

Quality Assurance

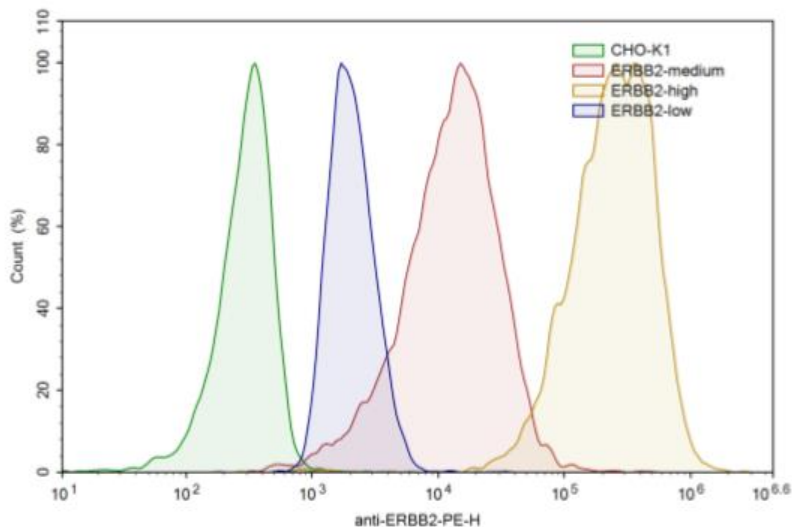


Figure 1. Expression of ERBB2 validated by flow cytometry. Flow cytometry using PE-conjugated anti-human ERBB2 antibody (Biologend #324406) detects ERBB2 on the surface of ERBB2-CHO Recombinant Cell Lines with different expression levels: 79612-H, high expresser: orange; 79612-M, medium expresser: red; 79612-L, low expresser: blue; WT CHO negative control: green.

Vector and Sequence

Human ERBB2 gene (NM_004448.2) was cloned into pCMV3-Hyg

```
MELAALCRWGLLLALLPPGAASTQVCTGTDMKRLRPASPETHLDMRLRHLVYQGCQVVQGNLELTYLPTNA
SLSFLQDIQEVQGYVLIAHNQVRQVPLQRLRIVRGTQLFEDNYALAVLDNGDPLNNTTPVTGASPGGLRE
LQLRSLTEILKGGVLIQRNPQLCYQDTILWKDIFHKNNQLALTLIDTNRSRACHPCSPMCKGSRWGESSE
DCQSLTRTVCAAGGCARCKGPLPTDCCHEQCAAGCTGPKHSDCLACLFHNSGICELHCPALVTYNTDTF
ESMPNPEGRYTFGASCVTACPYNYLSTDVGSCTLVCPLHNQEVTAEDGTQRCEKCSKPCARVCYGLGM
EHLREVRAVTSANIRGEFAGCKKIFGSLAFLPESFDGDPASNTAPLQPEQLQVFETLEEITGYLYISAWPDSL
PDLVSFQNLQVIRGRILHNGAYSLTLQGLGISWGLRSLRELGSGLALIHNTLCFVHTVPWDQLFRNPH
QALLHTANRPEDECVGEGLACHQLCARGHCWGPPTQCVNCSQFLRGQECVEECRVLQGLPREYVNA
RHCLPCHPECQPQNGSVTCFGPEADQCVAHAHYKDPPFCVARCPSGVKPDLSYMPIWKFPDEEGACQ
PCPINCTHSCVDLDDKGPCAEQRASPLTSIIASAVVIGILLVVVLGVVFGILIKRRQQKIRKYTMRRLLQETELV
EPLTPSGAMPNQAQMRILKETELRKVKVLGSGAFGTVYKGIWIPDGENVKIPVAIKVLENTSPKANKEILD
EAYVMAGVGSPPYVSRLGICLTSTVQLVTQLMPYGCLLDHVRENRGRLGSQDLLNWCMIAGMSYLED
VRLVHRDLAARNVLVKSPNHVKITDFGLARLLDIDETEYHADGGKVPKWMALLESILRRRFTHQSDVWSY
GVTVWELMTFGAKPYDGIPAREIPDLLEKGERLPQPPICIDVYVIMVKCWMIDSECRPRFRELVSFVSRM
ARDPQRFVVIQNEDLGPASPLDSTFYRSLLEDDDMGDLVDAEEYLVPPQQGFFCPDPAPGAGGMVHHRH
RSSSTRSGGGDLTLGLEPSEEEAPRSPLAPSEGAGSDVFDGDLGMGAAGLQSLPHTDPSPLQRYSED
PTVPLPSETDGYVAPLTCSPQPEYVNQPDVRPQPPSPREGPLPAARPAGATLERPKTLSPGKNGVVKDV
FAFGGAIVENPEYLTQQGGAAPQPHPPAFSPAFDNLYYWDQDPPERGAPPSTFKGTPTAENPEYLGLD
VPV
```

OUR PRODUCTS ARE FOR RESEARCH USE ONLY. NOT FOR DIAGNOSTIC OR THERAPEUTIC USE.

To place your order, please contact us by Phone **1.858.829.3082** Fax **1.858.481.8694**

Or you can Email us at: info@bpsbioscience.com

Please visit our website at: www.bpsbioscience.com



6042 Cornerstone Court W, Ste B
San Diego, CA 92121
Tel: 1.858.829.3082
Fax: 1.858.481.8694
Email: info@bpsbioscience.com

License Disclosure: Purchase of this cell line grants you with a 10-year license to use this cell line in your immediate laboratory, for research use only. This license does not permit you to share, distribute, sell, sublicense, or otherwise make the cell line available for use to other laboratories, departments, research institutions, hospitals, universities, or biotech companies. The license does not permit the use of this cell line in humans or for therapeutic or drug use. The license does not permit modification of the cell line in any way. Inappropriate use or distribution of this cell line will result in revocation of the license and result in an immediate cease of sales and distribution of BPS products to your laboratory. BPS does not warrant the suitability of the cell line for any particular use and does not accept any liability in connection with the handling or use of the cell line. Modifications of this cell line, transfer to another facility, or commercial use of the cells may require a separate license and additional fees; contact sales@bpsbioscience.com for details. Publications using this cell line should reference BPS Bioscience, Inc., San Diego.

Related Products

Product	Cat. #	Size
Growth Medium 3B	79529	500 ml
Thaw Medium 3	60186	100, 500ml
ERBB2-CHO Recombinant Cell Line (Medium Expression)	79612-M	2 vials
ERBB2-CHO Recombinant Cell Line (Low Expression)	79612-L	2 vials
HER2 (ERBB2) Kinase Assay Kit	40721	96 rxns.
HER2 (ERBB2), GST-tag	40230	10 µg
HER4, GST-tag	40232	10 µg
EGFR (ERBB1), His-tag, GST-tag	40187	10 µg
EGFR (ERBB1) Kinase Assay Kit	40321	96 rxns.

OUR PRODUCTS ARE FOR RESEARCH USE ONLY. NOT FOR DIAGNOSTIC OR THERAPEUTIC USE.

To place your order, please contact us by Phone **1.858.829.3082** Fax **1.858.481.8694**

Or you can Email us at: info@bpsbioscience.com

Please visit our website at: www.bpsbioscience.com