



SZABO SCANDIC

Part of Europa Biosite

Produktinformation



Forschungsprodukte & Biochemikalien



Zellkultur & Verbrauchsmaterial



Diagnostik & molekulare Diagnostik



Laborgeräte & Service

Weitere Information auf den folgenden Seiten!
See the following pages for more information!



Lieferung & Zahlungsart

siehe unsere [Liefer- und Versandbedingungen](#)

Zuschläge

- Mindermengenzuschlag
- Trockeneiszuschlag
- Gefahrgutzuschlag
- Expressversand

SZABO-SCANDIC HandelsgmbH

Quellenstraße 110, A-1100 Wien

T. +43(0)1 489 3961-0

F. +43(0)1 489 3961-7

mail@szabo-scandic.com

www.szabo-scandic.com

[linkedin.com/company/szaboscandic](https://www.linkedin.com/company/szaboscandic) 



6042 Cornerstone Court W, Ste B
San Diego, CA 92121
Tel: 1.858.202.1401
Fax: 1.858.481.8694
Email: info@bpsbioscience.com

Data Sheet

CD4⁺ T cells, Negatively Selected (Human) Catalog # 79752 Lot #190612D03

Description

Cryopreserved vial (10 x 10⁶ cells) of CD4⁺ T cells that were negatively selected from freshly isolated primary human peripheral blood mononuclear cells (PBMCs). The PBMCs came from a healthy donor, and were isolated from whole blood or leukapheresis samples using a Ficoll gradient. Magnetic antibodies to monocytes, granulocytes, CD8⁺ T cells, gamma/delta T cells and other immune subsets present in PBMCs were then used to purify untouched CD4⁺ T cells via immunomagnetic separation. Before and after CD4⁺ T cell isolation, the cells were stained to evaluate purity and viability by flow cytometry. Cells were cryopreserved in CryoStor CS10 cryopreservation medium (Stemcell, #07930) at a controlled rate.

Source

Normal human PBMC from Leukapheresis Sample

Stability and Storage

Store cells at -135°C or colder. Thawed cells should be used immediately for downstream applications. Because these are primary cells, we do not recommend maintaining these cells in culture for long periods of time.

Characterization Criteria

Cell count, viability (trypan blue exclusion and FACS with impermeable DNA binding dye), and surface expression of CD3 and CD4

Medium

Thaw Medium 10 (BPS Bioscience #79704): RPMI 1640 medium (Thermo Fisher, #A1049101) supplemented with 10% FBS (Thermo Fisher, #26140079), 1mM Sodium pyruvate (Corning, #25-000-CL), 1% Non-essential amino acids (Corning, #25-025-CL), 1% Penicillin/streptomycin (Thermo Fisher, #15140122)

OUR PRODUCTS ARE FOR RESEARCH USE ONLY. NOT FOR DIAGNOSTIC OR THERAPEUTIC USE.

To place your order, please contact us by Phone **1.858.202.1401** Fax **1.858.481.8694**

Or you can Email us at: info@bpsbioscience.com

Please visit our website at: www.bpsbioscience.com



6042 Cornerstone Court W, Ste B
San Diego, CA 92121
Tel: 1.858.202.1401
Fax: 1.858.481.8694
Email: info@bpsbioscience.com

Handling Directions

First, pre-warm Thaw Medium 10 to 37°C. It is important to work quickly in the following steps to ensure high cell viability and recovery. Quickly thaw cells in a 37°C water bath with constant but gentle agitation. Clean the outside of the vial with 70% ethanol and immediately transfer the entire contents to a 50 ml tube. Slowly add 10 ml of pre-warmed medium while gently swirling the tube to mix. Centrifuge the cell suspension at 300 x g for 15 minutes at room temperature. Carefully remove the supernatant with a pipette without disturbing the pellet. Gently resuspend the cell pellet by flicking the tube, then add the desired volume of warm medium, and mix. NOTE: Up to 30% cell loss can be expected during washing steps. Cells are now ready for use in downstream applications.

Donor Screening

Donors have been screened and determined negative for:

- Hepatitis B (anti-HBc EIA, HBsAg EIA)
- Hepatitis C (anti-HCV EIA)
- Human Immunodeficiency Virus (HIV-1/HIV-2 plus O)
- Human T-Lymphotropic Virus (HTLV-I/II)
- HIV-1/HCV/HBV
- West Nile Virus
- Trypanasoma cruzi

Note: Testing cannot guarantee that any sample is completely virus-free. These cells should be treated as potentially infectious and appropriate biological safety level 2 precautions should be used.

Donor Demographics and Lot-Specific Information

Donor Gender	Age	Ethnicity	Blood Type	Cryopreservation Date
M	25	Hispanic	O-pos	061219

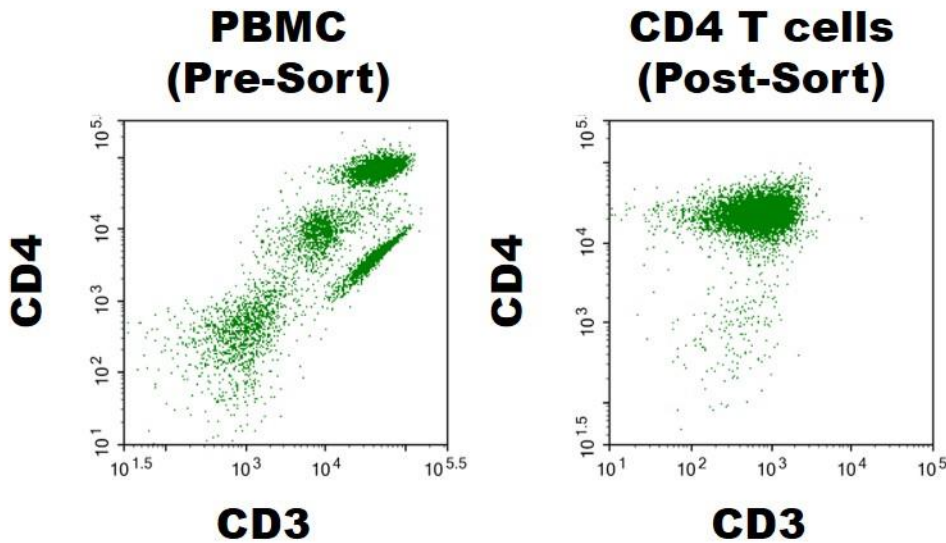
Surface Marker Summary

Viability	%CD3+	%CD3+CD4+		
95.9%	97.1%	94.6%		

OUR PRODUCTS ARE FOR RESEARCH USE ONLY. NOT FOR DIAGNOSTIC OR THERAPEUTIC USE.
To place your order, please contact us by Phone **1.858.202.1401** Fax **1.858.481.8694**
Or you can Email us at: info@bpsbioscience.com
Please visit our website at: www.bpsbioscience.com

Flow Cytometry Analysis

Results from frozen cells (Lot 190612D03) that were thawed and washed according to the handling directions.



Related Products

<u>Product</u>	<u>Cat. #</u>	<u>Size</u>
Human CD8+ T cells	79753	10 x 10 ⁶ cells
Normal Human PBMC	79059	30 x 10 ⁶ cells
Thaw Medium 2	60184	100 ml
Human IL-2	90184-A	10 µg

OUR PRODUCTS ARE FOR RESEARCH USE ONLY. NOT FOR DIAGNOSTIC OR THERAPEUTIC USE.

To place your order, please contact us by Phone **1.858.202.1401** Fax **1.858.481.8694**

Or you can Email us at: info@bpsbioscience.com

Please visit our website at: www.bpsbioscience.com