



# SZABO SCANDIC

Part of Europa Biosite

## Produktinformation



Forschungsprodukte & Biochemikalien



Zellkultur & Verbrauchsmaterial



Diagnostik & molekulare Diagnostik



Laborgeräte & Service

Weitere Information auf den folgenden Seiten!  
See the following pages for more information!



### Lieferung & Zahlungsart

siehe unsere [Liefer- und Versandbedingungen](#)

### Zuschläge

- Mindermengenzuschlag
- Trockeneiszuschlag
- Gefahrgutzuschlag
- Expressversand

### SZABO-SCANDIC HandelsgmbH

Quellenstraße 110, A-1100 Wien

T. +43(0)1 489 3961-0

F. +43(0)1 489 3961-7

[mail@szabo-scandic.com](mailto:mail@szabo-scandic.com)

[www.szabo-scandic.com](http://www.szabo-scandic.com)

[linkedin.com/company/szaboscandic](https://www.linkedin.com/company/szaboscandic) 

## Data Sheet

### CBL-B, GST-Tag

Human, Recombinant, N-terminal GST-Tag

**Catalog #:** 80415

**Lot #:** 160308-1      **Conc:** 0.73 mg/ml

**Formulated in:** 40 mM Tris-HCl, pH 8.0, 110 mM NaCl, 2.2 mM KCl, 0.04% Tween20, 0.2mM TECP, 20% glycerol, 8.8mM glutathione

**Stability:** At least 6 months at  $-80^{\circ}\text{C}$ . Avoid freeze/thaw cycles. Storing diluted enzyme is not recommended, if necessary, use carrier protein (BSA 0.1 – 0.5%).

**References:**

1. Jeon, M.S., *et al.*, *Immunity*. 2004; **21(2)**: 167-177.
2. Chiang, Y.J. *et al.*, *Nature*. 2000; **403**: 216-220.

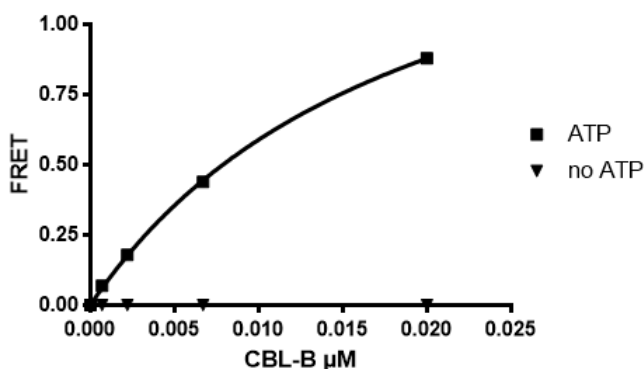
**Description:** Human Casitas B-lineage lymphoma proto-oncogene b (CBL-B), also known as E3 ubiquitin-protein ligase CBL-B, and RING finger protein 56, GenBank Accession No. NM\_170662, a.a. 39 – 426 with N-terminal GST-Tag expressed in an *E. coli* expression system. MW=72 kDa.

**Assay Description:** 10  $\mu\text{L}$  of reaction mixture contains 50 mM Tris, pH 7.4, 5 mM  $\text{MgCl}_2$ , 0.01% Tween, 1 mM DTT, 0.3  $\mu\text{M}$  Ub[Biotin], 100 nM Ube1, 1 mM ATP, 2  $\mu\text{M}$  of UBC5h5, and various amount of CBL-B. The reaction was initiated with the addition of ATP, and incubated at  $30^{\circ}\text{C}$  for 3 hours. Tb labeled anti-GST antibody donor and XL665 labeled acceptor was added and incubated at room temperature for an hour.

**Application:** Useful for the study of enzyme kinetics and regulation, to dephosphorylate target substrates and for screening inhibitors.

## Quality Assurance

### Specific Activity



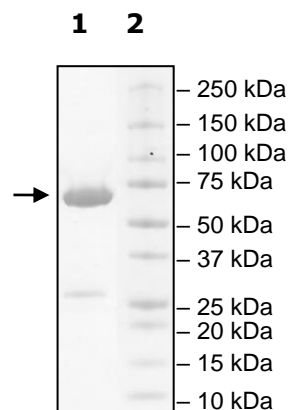
### 4-20% SDS-PAGE Coomassie staining

**Lane 1:**  
**CBLB(39-426)**  
 (3.7  $\mu\text{g}$  protein loaded)

**Lane 2:**  
 Protein Marker

**Purity:**  $\geq 95\%$

**MW:**  
 72 kDa



OUR PRODUCTS ARE FOR RESEARCH USE ONLY. NOT FOR DIAGNOSTIC OR THERAPEUTIC USE.

To place your order, please contact us by Phone **1.858.829.3082** Fax **1.858.481.8694**

Or you can Email us at: [info@bpsbioscience.com](mailto:info@bpsbioscience.com)

Please visit our website at: [www.bpsbioscience.com](http://www.bpsbioscience.com)