



SZABO SCANDIC

Part of Europa Biosite

Produktinformation



Forschungsprodukte & Biochemikalien



Zellkultur & Verbrauchsmaterial



Diagnostik & molekulare Diagnostik



Laborgeräte & Service

Weitere Information auf den folgenden Seiten!
See the following pages for more information!



Lieferung & Zahlungsart

siehe unsere [Liefer- und Versandbedingungen](#)

Zuschläge

- Mindermengenzuschlag
- Trockeneiszuschlag
- Gefahrgutzuschlag
- Expressversand

SZABO-SCANDIC HandelsgmbH

Quellenstraße 110, A-1100 Wien

T. +43(0)1 489 3961-0

F. +43(0)1 489 3961-7

mail@szabo-scandic.com

www.szabo-scandic.com

[linkedin.com/company/szaboscandic](https://www.linkedin.com/company/szaboscandic) 

Description

B2M HLA-A*24:02 Lentivirus are replication incompetent, HIV-based, VSV-G pseudotyped lentiviral particles ready to transduce most mammalian cells, including primary and non-dividing cells. These viruses result in the expression of B2M (beta-2 microglobulin) HLA (human leukocyte antigen)-A*24:02 driven by an EF1a promoter. The lentiviruses also contain a puromycin selection marker (Figure 1).

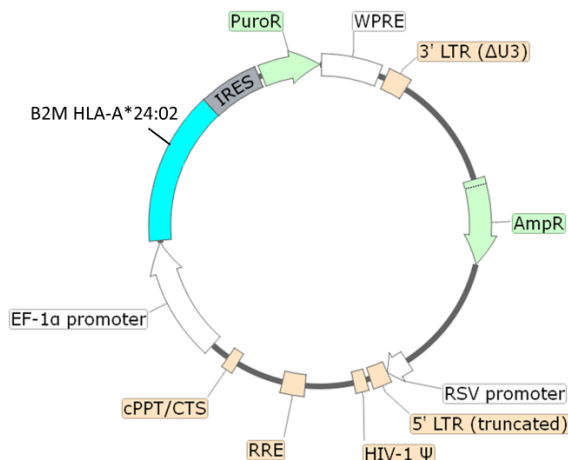


Figure 1. Schematic of the lenti-vector used to generate B2M HLA-A*24:02 Lentivirus.

Background

Human Leukocyte Antigen-A (HLA-A) is an MHC-I (major histocompatibility complex) heavy chain receptor, composed of HLA-A and β 2-microglobulin (B2M). There are over 200 genes encoding HLA variants and this variability plays a critical role in adaptive immunity. HLA-A*24:02 was found to be a common risk factor in anti-epileptic drug cutaneous adverse effects, which resulted in a recommendation to perform HLA pre-screening prior to drug administration. Since its prevalence in Asia is higher than HLA-A*02:01, the use of an HLA-A*24:02-restricted peptide targeting AFP (alpha-fetoprotein) may prove beneficial for HCC (hepatocellular) treatment. The understanding of the association between HLA alleles and diseases will allow a refinement of therapeutic strategies.

Application(s)

- Expression of human B2M HLA-A*24:02 in cells of interest.
- Generate B2M HLA-A*24:02 expressing cell pools or stable cell lines by puromycin selection.

Formulation

The lentivirus particles were produced in HEK293T cells. They are supplied in medium containing 90% DMEM + 10% FBS. Virus particles can be packaged in custom formulations and produced at higher titers by special request, for an additional fee.

Size and Titer

Two vials (500 μ l x 2) of lentivirus at a titer $\geq 10^7$ TU/ml. The titer will vary with each lot; the exact value is provided with each shipment.

Storage



Lentiviruses are shipped with dry ice. For long-term storage, it is recommended to store the lentiviruses at -80°C for up to 12 months from date of receipt. Avoid repeated freeze-thaw cycles. Titers can drop significantly with each freeze-thaw cycle.

Biosafety



The lentiviruses are produced with a SIN (self-inactivation) lentivector which ensures self-inactivation of the lentiviral construct after transduction and after integration into the genomic DNA of the target cells. None of the HIV genes (gag, pol, rev) will be expressed in the transduced cells, as they are expressed from packaging plasmids lacking the packing signal and are not present in the lentivirus particle. Although the pseudotyped lentiviruses are replication-incompetent, they require the use of a Biosafety Level 2 facility. BPS Bioscience recommends following all local federal, state, and institutional regulations and using all appropriate safety precautions.

Notes

To generate an HLA-A*24:02 stable cell line, remove the growth medium 48 hours after transduction and replace it with fresh growth medium containing the appropriate amount of puromycin (as pre-determined from a killing curve, <https://bpsbioscience.com/kill-curve-protocol>), for antibiotic selection of transduced cells, followed by clonal selection.

Validation Data

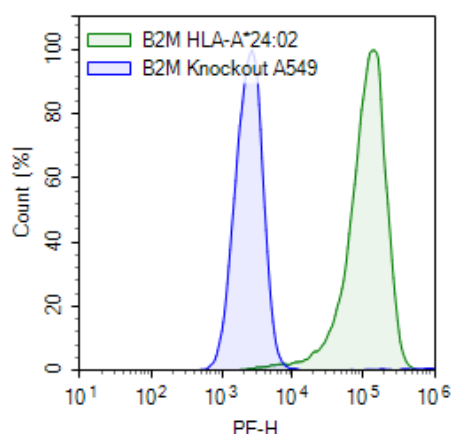


Figure 2. Expression of HLA-A*24:02 in B2M Knockout A549 cells transduced with HLA-A*24:02 Lentivirus.

Approximately 100,000 B2M Knockout A549 cells (#82871) were transduced with 1×10^6 TU (100 μ l of 10^7 TU/ml) of HLA-A*24:02 Lentivirus via spinoculation (800 x g at 32°C for 30 minutes) in the presence of 5 μ g/ml of Lenti-Fuse™ Polybrene Viral Transduction Enhancer (#78939). 48 hours post- transduction, the cells were stained with PE anti-human HLA-A, B, C Antibody (Biolegend #311406) and analyzed by flow cytometry. The y-axis represents the cell % and the x-axis indicates PE intensity.

Data is representative.

References

- Shi Y.-W., *et al.*, 2017 *Neurology* 88 (23): 2183-2191.
 Li Z., *et al.*, 2020 *Immunology* 159 (4): 384-392.

Troubleshooting Guide

Visit bpsbioscience.com/lentivirus-faq for detailed troubleshooting instructions. For lot-specific information and all other questions, please visit <https://bpsbioscience.com/contact>.

Related Products

<i>Products</i>	<i>Catalog #</i>	<i>Size</i>
HLA-A*01:01 Lentivirus	82423	500 µl x 2
B2M Knockout A549 Cell Line	82871	2 vials
HLA-C*08:02 K562 Cell Line	78974	2 vials
HLA-C*08:02 Lentivirus	78930	500 µl x 2
HLA-A/B/C Knockout Electroporation Kit	82395	1 Kit
HLA-A/B/C Knockout HEK293T Cell Line	82943	2 vials

Version 061825