



SZABO SCANDIC

Part of Europa Biosite

Produktinformation



Forschungsprodukte & Biochemikalien



Zellkultur & Verbrauchsmaterial



Diagnostik & molekulare Diagnostik



Laborgeräte & Service

Weitere Information auf den folgenden Seiten!
See the following pages for more information!



Lieferung & Zahlungsart

siehe unsere [Liefer- und Versandbedingungen](#)

Zuschläge

- Mindermengenzuschlag
- Trockeneiszuschlag
- Gefahrgutzuschlag
- Expressversand

SZABO-SCANDIC HandelsgmbH

Quellenstraße 110, A-1100 Wien

T. +43(0)1 489 3961-0

F. +43(0)1 489 3961-7

mail@szabo-scandic.com

www.szabo-scandic.com

[linkedin.com/company/szaboscandic](https://www.linkedin.com/company/szaboscandic) 



Thromboxane B₂ Express ELISA Kit - Monoclonal

Item No. 10004023

www.caymanchem.com

Customer Service 800.364.9897

Technical Support 888.526.5351

1180 E. Ellsworth Rd • Ann Arbor, MI • USA

TABLE OF CONTENTS

GENERAL INFORMATION	3	Materials Supplied
	4	Safety Data
	4	Precautions
	5	If You Have Problems
	5	Storage and Stability
	5	Materials Needed But Not Supplied
INTRODUCTION	6	Background
	6	About This Assay
	7	Description of AChE Competitive ELISAs
	8	Biochemistry of Acetylcholinesterase
	10	Definition of Key Terms
PRE-ASSAY PREPARATION	11	Buffer Preparation
	12	Sample Preparation
ASSAY PROTOCOL	16	Preparation of Assay-Specific Reagents
	18	Plate Set Up
	19	Performing the Assay
ANALYSIS	22	Calculations
	24	Performance Characteristics
RESOURCES	28	Troubleshooting
	29	Additional Reading
	29	References
	30	Plate Template
	31	Notes
	31	Warranty and Limitation of Remedy

GENERAL INFORMATION

Materials Supplied

Item Number	Item	96 wells Quantity/Size	480 wells Quantity/Size
10005065	Thromboxane B ₂ Express ELISA Monoclonal Antibody	1 vial/100 dtn	1 vial/500 dtn
10005064	Thromboxane B ₂ Express AChE Tracer	1 vial/100 dtn	1 vial/500 dtn
10005066	Thromboxane B ₂ Express ELISA Standard	1 vial	1 vial
400060	ELISA Buffer Concentrate (10X)	2 vials/10 ml	4 vials/10 ml
400062	Wash Buffer Concentrate (400X)	1 vial/5 ml	1 vial/12.5 ml
400035	Polysorbate 20	1 vial/3 ml	1 vial/3 ml
400008/ 400009	Goat Anti-Mouse IgG Coated Plate	1 plate	5 plates
400012	96-Well Cover Sheet	1 cover	5 covers
400050	Ellman's Reagent	3 vials/100 dtn	6 vials/250 dtn
400040	ELISA Tracer Dye	1 vial	1 vial
400042	ELISA Antiserum Dye	1 vial	1 vial

If any of the items listed above are damaged or missing, please contact our Customer Service department at (800) 364-9897 or (734) 971-3335. We cannot accept any returns without prior authorization.



WARNING: THIS PRODUCT IS FOR RESEARCH ONLY - NOT FOR HUMAN OR VETERINARY DIAGNOSTIC OR THERAPEUTIC USE.

Safety Data

This material should be considered hazardous until further information becomes available. Do not ingest, inhale, get in eyes, on skin, or on clothing. Wash thoroughly after handling. Before use, the user must review the complete Safety Data Sheet, which has been sent *via* email to your institution.

Precautions

Please read these instructions carefully before beginning this assay.

The reagents in this kit have been tested and formulated to work exclusively with Cayman Chemical's Thromboxane B₂ Express ELISA Kit - Monoclonal. This kit may not perform as described if any reagent or procedure is replaced or modified.

When compared to quantification by LC/MS or GC/MS, it is not uncommon for immunoassays to report higher analyte concentrations. While LC/MS or GC/MS analyses typically measure only a single compound, antibodies used in immunoassays sometimes recognize not only the target molecule, but also structurally related molecules, including biologically relevant metabolites. In many cases, measurement of both the parent molecule and metabolites is more representative of the overall biological response than is the measurement of a short-lived parent molecule. It is the responsibility of the researcher to understand the limits of both assay systems and to interpret their data accordingly.

If You Have Problems

Technical Service Contact Information

Phone: 888-526-5351 (USA and Canada only) or 734-975-3888

Email: techserv@caymanchem.com

In order for our staff to assist you quickly and efficiently, please be ready to supply the lot number of the kit (found on the outside of the box).

Storage and Stability

This kit will perform as specified if stored as directed at -20°C and used before the expiration date indicated on the outside of the box.

Materials Needed But Not Supplied

1. A plate reader capable of measuring absorbance between 405-420 nm.
2. Adjustable pipettes and a repeating pipettor.
3. A source of 'UltraPure' water. Water used to prepare all ELISA reagents and buffers must be deionized and free of trace organic contaminants ('UltraPure'). Use activated carbon filter cartridges or other organic scavengers. Glass distilled water (even if double distilled), HPLC-grade water, and sterile water (for injections) are not adequate for ELISA. *NOTE: UltraPure water is available for purchase from Cayman (Item No. 400000).*
4. Materials used for **Sample Preparation** (see page 12).

Background

Thromboxane A_2 (TXA_2) is produced from arachidonic acid by many cells and causes irreversible platelet aggregation and contraction of vascular and bronchial smooth muscle.¹⁻³ Like most lipid mediators, TXA_2 is not a circulating hormone. It is formed in response to local stimuli and exerts its effects within a short distance of its biosynthesis. TXA_2 is rapidly hydrolyzed non-enzymatically to form TXB_2 , which is then quickly metabolized ($t_{1/2}$ = 5-7 minutes) to urinary metabolites for clearance by the kidneys.⁴ Because of the transient nature of this compound it is difficult to accurately measure circulating levels in whole animal experimental models. In fact, it has been shown that plasma and urine levels of TXB_2 are primarily due to *ex vivo* platelet activation and intra-renal production, respectively.⁴⁻⁶ Therefore, measurement of TXB_2 metabolites such as 11-dehydro TXB_2 (Item No. 519510) and 2,3-dinor TXB_2 in urine and plasma may give more accurate estimates of *in vivo* TXA_2 production.⁷⁻⁹ TXB_2 measurement is better suited for samples that are unlikely to undergo extensive metabolism such as perfusates, lavage samples, tissue/cell culture, etc.

About This Assay

Cayman's TXB_2 Express ELISA Kit - Monoclonal is a competitive assay that can be used for quantification of TXB_2 in serum, urine, tissue culture supernatants, and other sample matrices. The assay has a range from 15.6-2,000 pg/ml and a sensitivity (80% B/ B_0) of approximately 45 pg/ml.

Description of AChE Competitive ELISAs^{10,11}

This assay is based on the competition between TXB_2 and a TXB_2 -acetylcholinesterase (AChE) conjugate (TXB_2 Tracer) for a limited number of TXB_2 Monoclonal Antibody. Because the concentration of the TXB_2 Tracer is held constant while the concentration of TXB_2 varies, the amount of TXB_2 Tracer that is able to bind to the monoclonal antibody will be inversely proportional to the concentration of TXB_2 in the well. This antibody TXB_2 (either free or tracer) complex binds to the goat polyclonal anti-mouse IgG that has been previously attached to the well. The plate is washed to remove any unbound reagents and then Ellman's Reagent (which contains the substrate to AChE) is added to the well. The product of this enzymatic reaction has a distinct yellow color and absorbs strongly at 412 nm. The intensity of this color, determined spectrophotometrically, is proportional to the amount of TXB_2 Tracer bound to the well, which is inversely proportional to the amount of free TXB_2 present in the well during the incubation; or

$$\text{Absorbance} \propto [\text{Bound } TXB_2 \text{ Tracer}] \propto 1/[TXB_2]$$

A schematic of this process is shown in Figure 1, below.

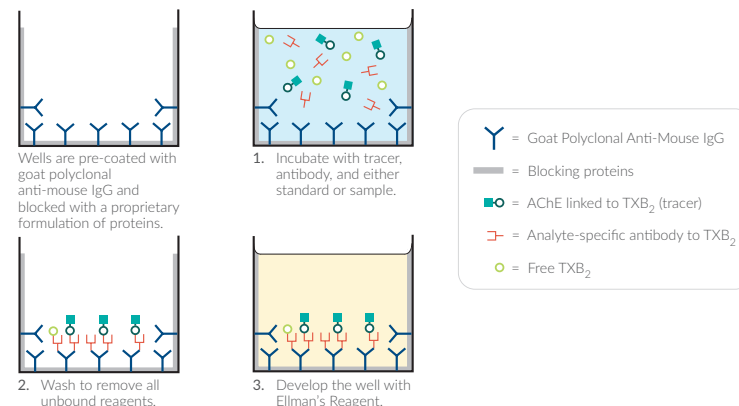


Figure 1. Schematic of the AChE ELISA

Biochemistry of Acetylcholinesterase

The electric organ of the electric eel, *E. electricus*, contains an avid AChE capable of massive catalytic turnover during the generation of its electrochemical discharges. The electric eel AChE has a clover leaf-shaped tertiary structure consisting of a triad of tetramers attached to a collagen-like structural fibril. This stable enzyme is capable of high turnover ($64,000 \text{ s}^{-1}$) for the hydrolysis of acetylthiocholine.

A molecule of the analyte covalently attached to a molecule of AChE serves as the tracer in AChE enzyme immunoassays. Quantification of the tracer is achieved by measuring its AChE activity with Ellman's Reagent. This reagent consists of acetylthiocholine and 5,5'-dithio-bis-(2-nitrobenzoic acid). Hydrolysis of acetylthiocholine by AChE produces thiocholine (see Figure 2, on page 9). The non-enzymatic reaction of thiocholine with 5,5'-dithio-bis-(2-nitrobenzoic acid) produces 5-thio-2-nitrobenzoic acid, which has a strong absorbance at 412 nm ($\epsilon = 13,600$).

AChE has several advantages over other enzymes commonly used for enzyme immunoassays. Unlike horseradish peroxidase, AChE does not self-inactivate during turnover. This property of AChE also allows redevelopment of the assay if it is accidentally splashed or spilled. In addition, the enzyme is highly stable under the assay conditions, has a wide pH range (pH 5-10), and is not inhibited by common buffer salts or preservatives. Since AChE is stable during the development step, it is unnecessary to use a 'stop' reagent, and the plate may be read whenever it is convenient.

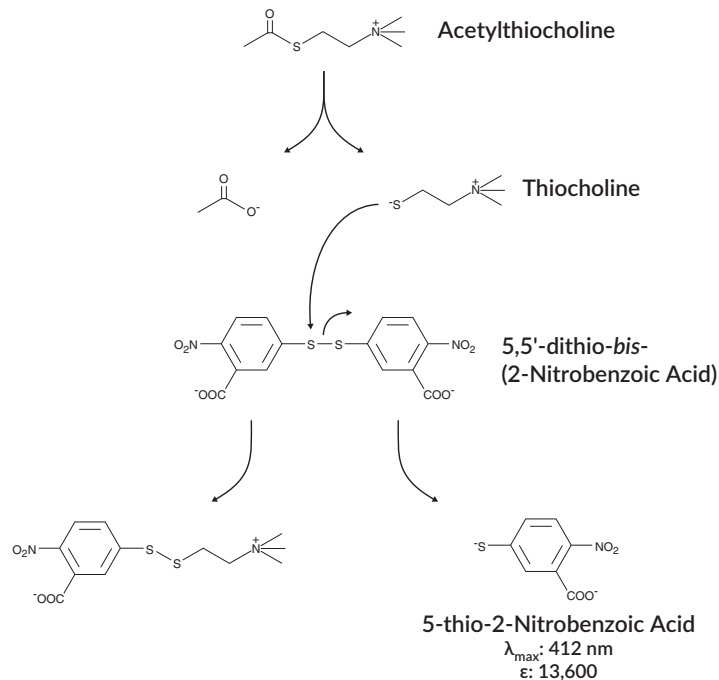


Figure 2. Reaction catalyzed by acetylcholinesterase

Definition of Key Terms

Blank: background absorbance caused by Ellman's Reagent. The blank absorbance should be subtracted from the absorbance readings of all the other wells, including NSB wells.

Total Activity: total enzymatic activity of the AChE-linked tracer. This is analogous to the specific activity of a radioactive tracer.

NSB (Non-Specific Binding): non-immunological binding of the tracer to the well. Even in the absence of specific antibody a very small amount of tracer still binds to the well; the NSB is a measure of this low binding. Do not forget to subtract the Blank absorbance values.

B₀ (Maximum Binding): maximum amount of the tracer that the antibody can bind in the absence of free analyte.

%B/B₀ (%Bound/Maximum Bound): ratio of the absorbance of a particular sample or standard well to that of the maximum binding (B₀) well.

Standard Curve: a plot of the %B/B₀ values *versus* concentration of a series of wells containing various known amounts of analyte.

Dtn: determination, where one dtn is the amount of reagent used per well.

Cross Reactivity: numerical representation of the relative reactivity of this assay towards structurally related molecules as compared to the primary analyte of interest. Biomolecules that possess similar epitopes to the analyte can compete with the assay tracer for binding to the primary antibody. Substances that are superior to the analyte in displacing the tracer result in a cross reactivity that is greater than 100%. Substances that are inferior to the primary analyte in displacing the tracer result in a cross reactivity that is less than 100%. Cross reactivity is calculated by comparing the mid-point (50% B/B₀) value of the tested molecule to the mid-point (50% B/B₀) value of the primary analyte when each is measured in assay buffer using the following formula:

$$\% \text{ Cross Reactivity} = \left[\frac{50\% \text{ B/B}_0 \text{ value for the primary analyte}}{50\% \text{ B/B}_0 \text{ value for the potential cross reactant}} \right] \times 100\%$$

PRE-ASSAY PREPARATION

NOTE: Water used to prepare all ELISA reagents and buffers must be deionized and free of trace organic contaminants ('UltraPure'). Use activated carbon filter cartridges or other organic scavengers. Glass distilled water (even if double distilled), HPLC-grade water, and sterile water (for injections) are not adequate for ELISA. UltraPure water may be purchased from Cayman Chemical (Item No. 400000).

Buffer Preparation

Store all diluted buffers at 4°C; they will be stable for about two months.

1. ELISA Buffer Preparation

Dilute the contents of one vial of ELISA Buffer Concentrate (10X) (Item No. 400060) with 90 ml of UltraPure water. Be certain to rinse the vial to remove any salts that may have precipitated. *NOTE: It is normal for the concentrated buffer to contain crystalline salts after thawing. These will completely dissolve upon dilution with water.*

2. Wash Buffer Preparation

5 ml vial Wash Buffer Concentrate (400X) (96-well kit; Item No. 400062): Dilute to a total volume of 2 liters with UltraPure water and add 1 ml of Polysorbate 20 (Item No. 400035).

OR

12.5 ml vial Wash Buffer Concentrate (400X) (480-well kit; Item No. 400062): Dilute to a total volume of 5 liters with UltraPure water and add 2.5 ml of Polysorbate 20 (Item No. 400035).

Smaller volumes of Wash Buffer can be prepared by diluting the Wash Buffer Concentrate 1:400 and adding Polysorbate 20 (0.5 ml/liter of Wash Buffer).

NOTE: Polysorbate 20 is a viscous liquid and cannot be measured by a regular pipette. A positive displacement pipette or a syringe should be used to deliver small quantities accurately.

Sample Preparation

In general, tissue culture supernatant samples (without FBS) may be diluted with ELISA Buffer and added directly to the assay well. Serum, as well as other heterogeneous mixtures such as lavage fluids and aspirates often contain contaminants which can interfere in the assay. The presence of mouse IgG in the sample will cause interference. It is best to check for interference before embarking on a large number of sample measurements. To test for interference, dilute one or two test samples to obtain at least two different dilutions of each sample between approximately 45-750 pg/ml (i.e., between 20-80% B/B₀). If the two dilutions of the sample show good correlation (differ by 20% or less) in the final calculated TXB₂ concentration, purification is not required. If you do not see good correlation of the different dilutions, purification is advised. The Purification Protocol, on page 13, is one such method.

NOTE: FBS contains high levels of TXB₂. If assaying tissue culture supernatants containing FBS, this background TXB₂ will need to be subtracted from values obtained for actual samples.

NOTE: A portion of urinary TXB₂ is likely to be of renal origin. For urinary measurement of systemically-produced TXB₂, Cayman recommends the use of our 11-dehydro TXB₂ Kit (Item No. 519510).

General Precautions

- All samples must be free of organic solvents prior to assay.
- Samples should be assayed immediately after collection; samples that cannot be assayed immediately should be stored at -80°C; they will be stable for approximately 1-2 months.
- Samples of mouse and rat origin may contain antibodies which interfere with the assay by binding to the goat anti-mouse plate. We recommend that all mouse and rat samples be purified prior to use in this assay.
- AEBSF (Pefabloc SC®) and PMSF inhibit AChE. Samples containing these protease inhibitors should not be used in this assay.

SPE (C-18) Purification Protocol

The following protocol is a suggestion only. You may choose a different protocol based on your own requirements, sample type, and expertise. If desired, recovery may be tracked by spiking samples with tritium-labeled TXB₂ ([³H]-TXB₂) and follow the Spiked-Sample Recovery Calculations in the Analysis section on page 23. Otherwise, omit steps 2 and 11.

Materials Needed

1. Tritium-labeled TXB₂ (optional)
2. 1 M acetate buffer (pH 4), deionized water, ethanol, methanol, and ethyl acetate
3. C-18 solid phase extraction (SPE) columns (Item No. 400020)

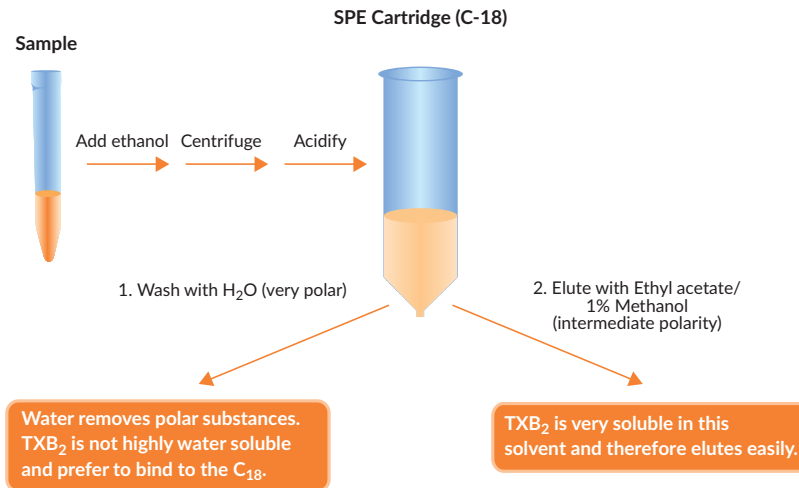


Figure 3. Schematic of TXB₂ purification by SPE (C-18)

1. Aliquot a known amount of each sample into a clean test tube (500 μ l is recommended). If your samples need to be concentrated, a larger volume should be used (e.g., a 5 ml sample will be concentrated by a factor of 10, a 10 ml sample will be concentrated by a factor of 20, etc.).
2. Add 10,000 cpm of tritium-labeled TXB₂ ([³H]-TXB₂). Use a high specific activity tracer to minimize the amount of radioactive TXB₂ as the ELISA will be able to detect the added TXB₂.
3. Precipitation of proteins using ethanol is optional and may not be needed if samples are clean enough to flow through the SPE Cartridge (C-18). Body fluids such as plasma and urine can typically be applied directly to the Cartridge (C-18) after the acidification step below. To precipitate proteins, add ethanol (approximately four times the sample volume) to each tube. Vortex to mix thoroughly. Incubate samples at 4°C for five minutes, then centrifuge at 3,000 x g for 10 minutes to remove precipitated proteins. Transfer the supernatant to a clean test tube. Evaporate the ethanol under nitrogen.
4. Acidify the sample to ~pH 4 by the addition of 1 M acetate buffer. (To avoid having to measure the pH of each individual sample, adjust the pH of an equivalent volume of sample matrix to pH 4.0 using 1M acetate buffer. Add this volume of acetate buffer to each sample. *NOTE: For samples of different volumes, the amount of acid should be adjusted to maintain this ratio of acid to sample.* If the samples are cloudy or contain precipitate, either filter or centrifuge to remove the precipitate. Particulate matter in the sample may clog the SPE Cartridge (C-18).
5. Prepare SPE (C-18) columns by rinsing with 5 ml methanol followed by 5 ml UltraPure water. Do not allow the SPE Cartridge to dry.
6. Apply the sample to the SPE Cartridge (C-18) and allow the sample to completely enter the packing material.
7. Wash the column with 5 ml UltraPure water. Discard the washes.

8. Elute the TXB₂ from the column with 5 ml ethyl acetate containing 1% methanol. Higher recovery and better reproducibility may be obtained if the sample is applied and eluted by gravity. The wash steps may be performed under vacuum or pressure.*
9. Evaporate the ethyl acetate to dryness under a stream of nitrogen. It is very important that all of the organic solvent be removed as even small quantities will adversely affect the ELISA.
10. To resuspend the sample, add 500 μ l ELISA Buffer. Vortex. It is common for insoluble precipitate to remain in the sample after addition of ELISA Buffer; this will not affect the assay. The sample is now ready for use in the ELISA.
11. Use 50 μ l of the resuspended sample for scintillation counting.

*If it is necessary to stop during this purification, samples may be stored in the ethyl acetate/methanol solution at -20°C or -80°C.

ASSAY PROTOCOL

Preparation of Assay-Specific Reagents

TXB₂ Express ELISA Standard

Equilibrate a pipette tip in ethanol by repeatedly filling and expelling the tip with ethanol several times. Using the equilibrated pipette tip, transfer 100 μ l of the TXB₂ Express ELISA Standard (Item No. 10005066) into a clean test tube, then dilute with 900 μ l UltraPure water. The concentration of this solution (the bulk standard) will be 20 ng/ml.

NOTE: If assaying culture medium samples that have not been diluted with ELISA Buffer, culture medium should be used in place of ELISA Buffer for dilution of the standard curve.

To prepare further the standard for use in ELISA: Obtain eight clean test tubes and number them #1 through #8. Aliquot 900 μ l ELISA Buffer to tube #1 and 500 μ l ELISA Buffer to tubes #2-8. Transfer 100 μ l of the bulk standard (20 ng/ml) to tube #1 and mix thoroughly. Serially dilute the standard by removing 500 μ l from tube #1 and placing in tube #2; mix thoroughly. Next, remove 500 μ l from tube #2 and place it into tube #3; mix thoroughly. Repeat this process for tubes #4-8. The concentrations of these standards are 2,000, 1,000, 500, 250, 125, 62.5, 31.3, and 15.6 pg/ml, respectively. These diluted standards should not be stored for more than 24 hours.

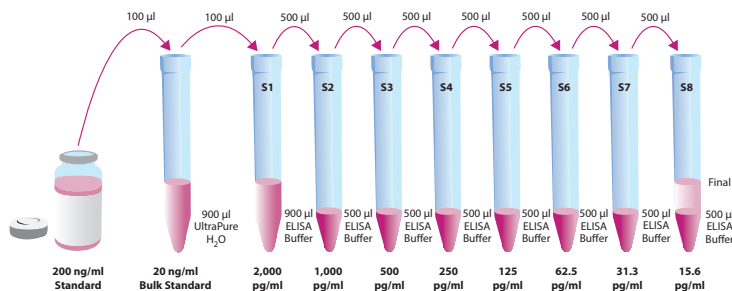


Figure 4. Preparation of the TXB₂ Express standards

Thromboxane B₂ Express AChE Tracer

Reconstitute the TXB₂ Express AChE Tracer as follows:

100 dtn TXB₂ Express AChE Tracer (96-well kit; Item No. 10005064):
Reconstitute with 6 ml ELISA Buffer.

OR

500 dtn TXB₂ Express AChE Tracer (480-well kit; Item No. 10005064):
Reconstitute with 30 ml ELISA Buffer.

Store the reconstituted TXB₂ Express AChE Tracer at 4°C (*do not freeze!*) and use within four weeks. A 20% surplus of tracer has been included to account for any incidental losses.

Tracer Dye Instructions (optional)

This dye may be added to the tracer, if desired, to aid in visualization of tracer-containing wells. Add the dye to the reconstituted tracer at a final dilution of 1:100 (add 60 μ l of dye to 6 ml tracer or add 300 μ l of dye to 30 ml of tracer).

Thromboxane B₂ Express ELISA Monoclonal Antibody

Reconstitute the TXB₂ Express ELISA Monoclonal Antibody as follows:

100 dtn TXB₂ Express ELISA Monoclonal Antibody (96-well kit; Item No. 10005065): Reconstitute with 6 ml ELISA Buffer.

OR

500 dtn TXB₂ Express ELISA Monoclonal Antibody (480-well kit; Item No. 10005065): Reconstitute with 30 ml ELISA Buffer.

Store the reconstituted TXB₂ Express ELISA Monoclonal Antibody at 4°C. It will be stable for at least four weeks. A 20% surplus of antibody has been included to account for any incidental losses.

Antiserum Dye Instructions (optional)

This dye may be added to the antibody, if desired, to aid in visualization of antibody-containing wells. Add the dye to the reconstituted antibody at a final dilution of 1:100 (add 60 μ l of dye to 6 ml antibody or add 300 μ l of dye to 30 ml of antibody).

Plate Set Up

The 96-well plate(s) included with this kit is supplied ready to use. It is not necessary to rinse the plate(s) prior to adding the reagents. *NOTE: If you do not need to use all the strips at once, place the unused strips back in the plate packet and store at 4°C. Be sure the packet is sealed with the desiccant inside.*

Each plate or set of strips must contain a minimum of two blanks (Blk), two non-specific binding wells (NSB), two maximum binding wells (B₀), and an eight point standard curve run in duplicate. *NOTE: Each assay must contain this minimum configuration in order to ensure accurate and reproducible results.* Each sample should be assayed at two dilutions and each dilution should be assayed in duplicate. For statistical purposes, we recommend assaying samples in triplicate.

A suggested plate format is shown in Figure 5, below. The user may vary the location and type of wells present as necessary for each particular experiment. The plate format provided below has been designed to allow for easy data analysis using a convenient spreadsheet offered by Cayman (see page 22, for more details). We suggest you record the contents of each well on the template sheet provided (see page 30).

	1	2	3	4	5	6	7	8	9	10	11	12
A	Blk	S1	S1	1	1	1	9	9	9	17	17	17
B	Blk	S2	S2	2	2	2	10	10	10	18	18	18
C	NSB	S3	S3	3	3	3	11	11	11	19	19	19
D	NSB	S4	S4	4	4	4	12	12	12	20	20	20
E	B ₀	S5	S5	5	5	5	13	13	13	21	21	21
F	B ₀	S6	S6	6	6	6	14	14	14	22	22	22
G	B ₀	S7	S7	7	7	7	15	15	15	23	23	23
H	TA	S8	S8	8	8	8	16	16	16	24	24	24

Blk - Blank
TA - Total Activity
NSB - Non-Specific Binding
B₀ - Maximum Binding
S1-S8 - Standards 1-8
1-24 - Samples

Figure 5. Sample plate format

Performing the Assay

Pipetting Hints

- Use different tips to pipette each reagent.
- Before pipetting each reagent, equilibrate the pipette tip in that reagent (i.e., slowly fill the tip and gently expel the contents, repeat several times).
- Do not expose the pipette tip to the reagent(s) already in the well.

Addition of the Reagents

1. ELISA Buffer

Add 100 µl ELISA Buffer to NSB wells. Add 50 µl ELISA Buffer to B₀ wells. If culture medium was used to dilute the standard curve, substitute 50 µl of culture medium for ELISA Buffer in the NSB and B₀ wells (i.e., add 50 µl culture medium to NSB and B₀ wells and 50 µl ELISA Buffer to NSB wells).

2. Thromboxane B₂ Express ELISA Standard

Add 50 µl from tube #8 to both of the lowest standard wells (S8). Add 50 µl from tube #7 to each of the next two standard wells (S7). Continue with this procedure until all the standards are aliquoted. The same pipette tip should be used to aliquot all the standards. Before pipetting each standard, be sure to equilibrate the pipette tip in that standard.

3. Samples

Add 50 µl of sample per well. Each sample should be assayed at a minimum of two dilutions. Each dilution should be assayed in duplicate (triplicate recommended).

4. Thromboxane B₂ Express AChE Tracer

Add 50 µl to each well except the TA and the Blk wells.

5. Thromboxane B₂ Express ELISA Monoclonal Antibody

Add 50 µl to each well except the TA, the NSB, and the Blk wells.

Well	ELISA Buffer	Standard/Sample	Tracer	Antibody
Blk	-	-	-	-
TA	-	-	5 µl (at devl. step)	-
NSB	100 µl	-	50 µl	-
B ₀	50 µl	-	50 µl	50 µl
Std/Sample	-	50 µl	50 µl	50 µl

Table 1. Pipetting summary

Incubation of the Plate

Cover each plate with plastic film (Item No. 400012) and incubate two hours at room temperature on an orbital shaker.

Development of the Plate

1. Reconstitute Ellman's Reagent immediately before use (20 ml of reagent is sufficient to develop 100 wells):

100 dtn vial Ellman's Reagent (96-well kit; Item No. 400050): Reconstitute with 20 ml of UltraPure water.

OR

250 dtn vial Ellman's Reagent (480-well kit; Item No. 400050): Reconstitute with 50 ml of UltraPure water.

NOTE: Reconstituted Ellman's Reagent is unstable and should be used the same day it is prepared; protect the Ellman's Reagent from light when not in use. Extra vials of the reagent have been provided should a plate need to be re-developed or multiple assays run on different days.

2. Empty the wells and rinse five times with Wash Buffer.
3. Add 200 µl of Ellman's Reagent to each well.
4. Add 5 µl of tracer to the TA wells.
5. Cover the plate with plastic film. Optimum development is obtained by using an orbital shaker equipped with a large, flat cover to allow the plate(s) to develop in the dark. This assay typically develops (*i.e.*, B₀ wells ≥0.3 A.U. (blank subtracted)) in 60-90 minutes.

Reading the Plate

1. Wipe the bottom of the plate with a clean tissue to remove fingerprints, dirt, etc.
2. Remove the plate cover being careful to keep Ellman's Reagent from splashing on the cover. *NOTE: Any loss of Ellman's Reagent will affect the absorbance readings. If Ellman's Reagent is present on the cover, use a pipette to transfer the Ellman's Reagent into the well. If too much Ellman's Reagent has splashed on the cover to easily redistribute back into the wells, wash the plate three times with wash buffer and repeat the development with fresh Ellman's Reagent.*
3. Read the plate at a wavelength between 405 and 420 nm. The absorbance may be checked periodically until the B₀ wells have reached a minimum of 0.3 A.U. (blank subtracted). The plate should be read when the absorbance of the B₀ wells are in the range of 0.3-1.5 A.U. (blank subtracted). If the absorbance of the wells exceeds 2.0, wash the plate, add fresh Ellman's Reagent and let it develop again.

ANALYSIS

Many plate readers come with data reduction software that plot data automatically. Alternatively a spreadsheet program can be used. The data should be plotted as either %B/B₀ versus log concentration using a four-parameter logistic fit or as logit B/B₀ versus log concentration using a linear fit. *NOTE: Cayman Chemical has a computer spreadsheet available for data analysis. Please contact Technical Service or visit our website (www.caymanchem.com/analysis/elisa) to obtain a free copy of this convenient data analysis tool.*

Calculations

Preparation of the Data

The following procedure is recommended for preparation of the data prior to graphical analysis.

NOTE: If the plate reader has not subtracted the absorbance readings of the blank wells from the absorbance readings of the rest of the plate, be sure to do that now.

1. Average the absorbance readings from the NSB wells.
2. Average the absorbance readings from the B₀ wells.
3. Subtract the NSB average from the B₀ average. This is the corrected B₀ or corrected maximum binding.
4. Calculate the B/B₀ (Sample or Standard Bound/Maximum Bound) for the remaining wells. To do this, subtract the average NSB absorbance from the S1 absorbance and divide by the corrected B₀ (from Step 3). Repeat for S2-S8 and all sample wells. (To obtain %B/B₀ for a logistic four-parameter fit, multiply these values by 100.)

*NOTE: The TA values are not used in the standard curve calculations. Rather, they are used as a diagnostic tool; the corrected B₀ divided by the actual TA (10X measured absorbance) will give the %Bound. This value should closely approximate the %Bound that can be calculated from the **Sample Data** (see page 24). Erratic absorbance values and a low (or no) %Bound could indicate the presence of organic solvents in the buffer or other technical problems (see page 28 for **Troubleshooting**).*

Plot the Standard Curve

Plot %B/B₀ for standards S1-S8 versus TXB₂ concentration using linear (y) and log (x) axes and perform a 4-parameter logistic fit.

Alternative Plot - The data can also be linearized using a logit transformation. The equation for this conversion is shown below. *NOTE: Do not use %B/B₀ in this calculation.*

$$\text{logit (B/B}_0\text{)} = \ln [\text{B/B}_0\text{/(1 - B/B}_0\text{)}]$$

Plot the data as logit (B/B₀) versus log concentrations and perform a linear regression fit.

Determine the Sample Concentration

Calculate the B/B₀ (or %B/B₀) value for each sample. Determine the concentration of each sample using the equation obtained from the standard curve. *NOTE: Remember to account for any concentration or dilution of the sample prior to the addition to the well. Samples with %B/B₀ values greater than 80% or less than 20% should be re-assayed as they generally fall out of the linear range of the standard curve. A 20% or greater disparity between the apparent concentration of two different dilutions of the same sample indicates interference which could be eliminated by purification.*

Spiked-Sample Recovery Calculation

$$\text{Recovery Factor} = \frac{10 \times \text{cpm of sample}}{[\text{^3H}]\text{-TXB}_2 \text{ added to sample (cpm)}}$$

TXB₂ (pg) in purified sample =

$$\left[\frac{\text{Value from ELISA (pg/ml)}}{\text{Recovery Factor}} \right] \times 0.5 \text{ ml} - \text{added } [\text{^3H}]\text{-TXB}_2 \text{ (pg)}$$

$$\text{Total TXB}_2 \text{ in sample (pg/ml)} = \frac{\text{TXB}_2 \text{ (pg) in purified sample}}{\text{Volume of sample used for purification (ml)}}$$

Performance Characteristics

Sample Data

The standard curve presented here is an example of the data typically produced with this kit; however, your results will not be identical to these. You **must** run a new standard curve. Do not use the data below to determine the values of your samples. Your results could differ substantially.

	Raw Data		Average	Corrected
Total Activity	0.717	0.772	0.744	
NSB	0.000	0.000	0.000	
B ₀	0.842	0.838		
	0.856	0.929	0.866	0.866

Dose (pg/ml)	Raw Data		Corrected		%B/B ₀	
2,000	0.074	0.074	0.074	0.074	8.5	8.5
1,000	0.140	0.140	0.140	0.140	16.2	16.2
500	0.235	0.237	0.235	0.237	27.1	27.4
250	0.361	0.363	0.361	0.363	41.6	41.9
125	0.512	0.499	0.512	0.499	59.1	57.6
62.5	0.642	0.645	0.642	0.645	74.1	74.5
31.3	0.750	0.731	0.750	0.731	86.4	84.4
15.6	0.824	0.841	0.824	0.841	95.1	97.1

Table 2. Typical results

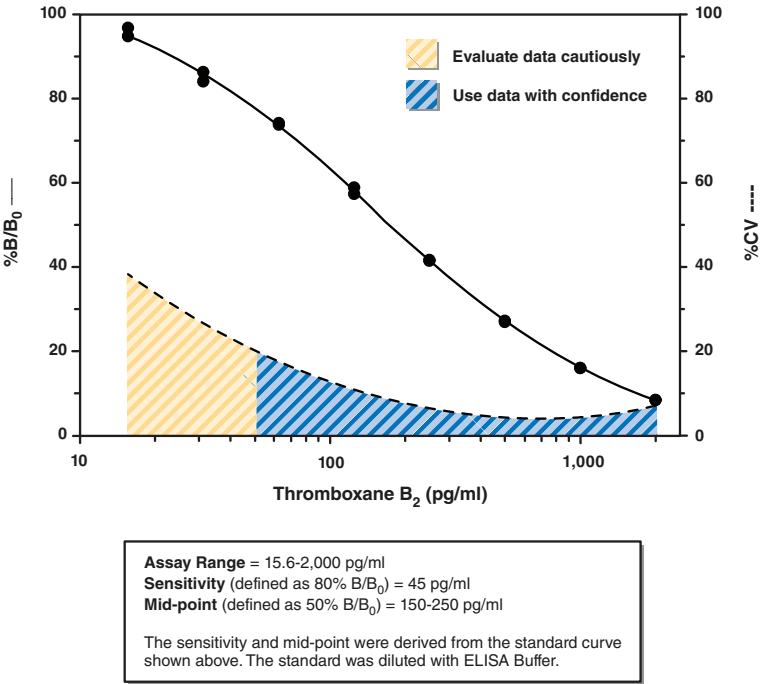


Figure 6. Typical standard curve

Precision:

The intra- and inter-assay CVs have been determined at multiple points on the standard curve. These data are summarized in the graph on page 25 and in the table below.

Dose (pg/ml)	%CV*	
	Intra-assay variation	Inter-assay variation
2,000	6.0	5.7
1,000	6.1	5.1
500	5.2	5.8
250	5.7	6.7
125	10.3	9.8
62.5	18.3	10.1
31.3	†	13.2
15.6	†	†

Table 3. Intra- and inter-assay variation

*%CV represents the variation in concentration (not absorbance) as determined using a reference standard curve.

†Outside of the recommended usable range of the assay.

Cross Reactivity:

Compound	Cross Reactivity
Thromboxane B ₂	100%
Thromboxane B ₃	10.1%
2,3-dinor Thromboxane B ₂	7.9%
Prostaglandin F _{1α}	5.6%
Prostaglandin D ₂	3.1%
Prostaglandin F _{2α}	2.2%
6-keto Prostaglandin F _{1α}	0.74%
Prostaglandin E ₂	0.72%
2,3-dinor-6-keto Prostaglandin F _{1α}	0.04%
11-dehydro Thromboxane B ₂	0.04%
11-dehydro Thromboxane B ₃	0.01%
Leukotriene B ₄	<0.01%
tetranor-PGEM	<0.01%
tetranor-PGFM	<0.01%
13,14-dihydro-15-keto Prostaglandin F _{2α}	<0.01%

Table 4. Cross Reactivity of the TXB₂ Express ELISA

RESOURCES

Troubleshooting

Problem	Possible Causes	Recommended Solutions
Erratic values; dispersion of duplicates	A. Trace organic contaminants in the water source B. Poor pipetting/technique	A. Replace activated carbon filter or change source of UltraPure water
High NSB (>10% of B ₀)	A. Poor washing B. Exposure of NSB wells to specific antibody	A. Rewash plate and redevelop
Very low B ₀	A. Trace organic contaminants in the water source B. Plate requires additional development time C. Dilution error in preparing reagents	A. Replace activated carbon filter or change source of UltraPure water B. Return plate to shaker and re-read later
Low sensitivity (shift in dose response curve)	Standard is degraded	Replace standard
Analyses of two dilutions of a biological sample do not agree (i.e., more than 20% difference)	Interfering substances are present	Purify sample prior to analysis by ELISA ¹²
Only Total Activity (TA) wells develop	Trace organic contaminants in the water source	Replace activated carbon filter or change source of UltraPure water

Additional Reading

Go to www.caymanchem.com/10004023/references for a list of publications citing the use of Cayman's TXB₂ Express ELISA Kit - Monoclonal.

References

1. Hamberg, M., Svensson, J., and Samuelsson, B. *Proc. Natl. Acad. Sci. USA* **72**, 2994-2998 (1975).
2. Ellis, E.F., Oelz, O., Roberts, L.J., II, et al. *Science* **193**, 1135-1137 (1976).
3. Salzman, P.M., Salmon, J.A., and Moncada, S. *J. Pharmacol. Exp. Ther.* **215**, 240-247 (1980).
4. Patrono, C., Ciabattoni, G., Pugliese, F., et al. *J. Clin. Invest.* **77**, 590-594 (1986).
5. Patrono, C., Ciabattoni, G., Patrignani, P., et al. *Adv. Prostaglandin Thromboxane Leukotriene Res.* **11**, 493-498 (1983).
6. Samuelsson, B., Granström, E., Green, K., et al. *Annu. Rev. Biochem.* **44**, 669-695 (1975).
7. Catella, F., Healy, D., Lawson, J.A., et al. *Proc. Natl. Acad. Sci. USA* **83**, 5861-5865 (1986).
8. Ciabattoni, G., Pugliese, F., Davi, G., et al. *Biochim. Biophys. Acta* **992**, 66-70 (1989).
9. Murphy, R.C. and Fitzgerald, G.A. *Adv. Prostaglandin Thromboxane Leukotriene Res.* **22**, 341-348 (1994).
10. Maclouf, J., Grassi, J., and Pradelles, P. Chapter 5, in *Prostaglandin and Lipid Metabolism in Radiation Injury*. Walden, T.L., Jr. and Hughes, H.N., editors, Plenum Press, Rockville, 355-364 (1987).
11. Pradelles, P., Grassi, J. and Maclouf, J. *Anal. Chem.* **57**, 1170-1173 (1985).
12. Maxey, K.M., Maddipati, K.R., and Birkmeier, J. *J. Clin. Immunoassay* **15**, 116-120 (1992).

12								
11								
10								
9								
8								
7								
6								
5								
4								
3								
2								
1								
	A	B	C	D	E	F	G	H

Warranty and Limitation of Remedy

Buyer agrees to purchase the material subject to Cayman’s Terms and Conditions. Complete Terms and Conditions including Warranty and Limitation of Liability information can be found on our website.

This document is copyrighted. All rights are reserved. This document may not, in whole or part, be copied, photocopied, reproduced, translated, or reduced to any electronic medium or machine-readable form without prior consent, in writing, from Cayman Chemical Company.

©11/12/2021, Cayman Chemical Company, Ann Arbor, MI, All rights reserved. Printed in U.S.A.

