



SZABO SCANDIC

Part of Europa Biosite

Produktinformation



Forschungsprodukte & Biochemikalien



Zellkultur & Verbrauchsmaterial



Diagnostik & molekulare Diagnostik



Laborgeräte & Service

Weitere Information auf den folgenden Seiten!
See the following pages for more information!



Lieferung & Zahlungsart

siehe unsere [Liefer- und Versandbedingungen](#)

Zuschläge

- Mindermengenzuschlag
- Trockeneiszuschlag
- Gefahrgutzuschlag
- Expressversand

SZABO-SCANDIC HandelsgmbH

Quellenstraße 110, A-1100 Wien

T. +43(0)1 489 3961-0

F. +43(0)1 489 3961-7

mail@szabo-scandic.com

www.szabo-scandic.com

[linkedin.com/company/szaboscandic](https://www.linkedin.com/company/szaboscandic) 

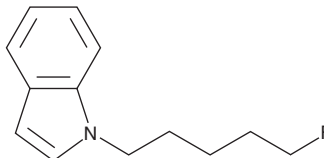
PRODUCT INFORMATION



5-Fluoropentylindole

Item No. 15454

CAS Registry No.: 1859218-30-6
Formal Name: 1-(5-fluoropentyl)-1H-indole
MF: $C_{13}H_{16}FN$
FW: 205.3
Purity: $\geq 95\%$
Supplied as: A solution in methanol
Storage: $-20^{\circ}C$
Stability: ≥ 4 years



Information represents the product specifications. Batch specific analytical results are provided on each certificate of analysis.

Description

A wide variety of aminoalkylindole analogs are potent synthetic cannabinoids (CBs), including many of the JWH compounds.¹ An alkyl chain of five carbons in length produces compounds with high affinity for both the central CB₁ and the peripheral CB₂ receptors.² The addition of a terminal fluorine to the pentyl chain can further increase affinity for both CB receptors.³ 5-Fluoropentylindole is the base structure for a variety of synthetic CBs. A range of structures are commonly added to this base via a ketone linkage at the three position of the indole. The physiological and toxicological properties of this compound have not been evaluated. This product is intended for forensic and research applications.

References

1. Wiley, J.L., Compton, D.R., Dai, D., *et al.* Structure-activity relationships of indole- and pyrrole-derived cannabinoids. *J. Pharmacol. Exp. Ther.* **285**(3), 995-1004 (1998).
2. Aung, M.M., Griffin, G., Huffman, J.W., *et al.* Influence of the N-1 alkyl chain length of cannabimimetic indoles upon CB₁ and CB₂ receptor binding. *Drug Alcohol Depend.* **60**(2), 133-140 (2000).
3. Makriyannis, A. and Deng, H. Cannabimimetic indole derivatives. *University of Connecticut WO01/28557A1* (2001).

WARNING

THIS PRODUCT IS FOR RESEARCH ONLY - NOT FOR HUMAN OR VETERINARY DIAGNOSTIC OR THERAPEUTIC USE.

SAFETY DATA

This material should be considered hazardous until further information becomes available. Do not ingest, inhale, get in eyes, on skin, or on clothing. Wash thoroughly after handling. Before use, the user must review the [complete](#) Safety Data Sheet, which has been sent via email to your institution.

WARRANTY AND LIMITATION OF REMEDY

Buyer agrees to purchase the material subject to Cayman's Terms and Conditions. Complete Terms and Conditions including Warranty and Limitation of Liability information can be found on our website.

Copyright Cayman Chemical Company, 06/28/2023

CAYMAN CHEMICAL

1180 EAST ELLSWORTH RD
ANN ARBOR, MI 48108 · USA

PHONE: [800] 364-9897
[734] 971-3335

FAX: [734] 971-3640

CUSTSERV@CAYMANCHEM.COM
WWW.CAYMANCHEM.COM