



# SZABO SCANDIC

Part of Europa Biosite

## Produktinformation



Forschungsprodukte & Biochemikalien



Zellkultur & Verbrauchsmaterial



Diagnostik & molekulare Diagnostik



Laborgeräte & Service

Weitere Information auf den folgenden Seiten!  
See the following pages for more information!



### Lieferung & Zahlungsart

siehe unsere [Liefer- und Versandbedingungen](#)

### Zuschläge

- Mindermengenzuschlag
- Trockeneiszuschlag
- Gefahrgutzuschlag
- Expressversand

### SZABO-SCANDIC Handels GmbH

Quellenstraße 110, A-1100 Wien

T. +43(0)1 489 3961-0

F. +43(0)1 489 3961-7

[mail@szabo-scandic.com](mailto:mail@szabo-scandic.com)

[www.szabo-scandic.com](http://www.szabo-scandic.com)

[linkedin.com/company/szaboscandic](https://www.linkedin.com/company/szaboscandic)



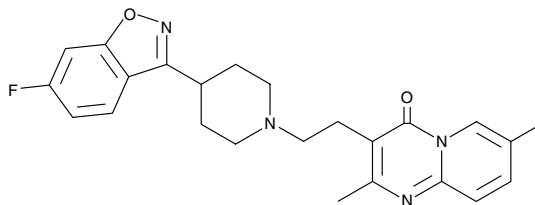
# Product Information



## Methyl 5,6,7,8-Tetradehydro Risperidone

Item No. 17801

**CAS Registry No.:** 106266-08-4  
**Formal Name:** 3-[2-[4-(6-fluoro-1,2-benzisoxazol-3-yl)-1-piperidinyl]ethyl]-2,7-dimethyl-4H-pyrido[1,2-a]pyrimidin-4-one  
**MF:** C<sub>24</sub>H<sub>25</sub>FN<sub>4</sub>O<sub>2</sub>  
**FW:** 420.5  
**Purity:** ≥98%  
**Stability:** ≥2 years at -20°C  
**Supplied as:** A crystalline solid  
**UV/Vis.:** λ<sub>max</sub>: 259, 285, 345 nm



### Laboratory Procedures

For long term storage, we suggest that methyl 5,6,7,8-tetradehydro risperidone be stored as supplied at -20°C. It should be stable for at least two years.

Methyl 5,6,7,8-tetradehydro risperidone is supplied as a crystalline solid. A stock solution may be made by dissolving the methyl 5,6,7,8-tetradehydro risperidone in the solvent of choice. Methyl 5,6,7,8-tetradehydro risperidone is soluble in organic solvents such as ethanol, DMSO, and dimethyl formamide (DMF), which should be purged with an inert gas. The solubility of methyl 5,6,7,8-tetradehydro risperidone in these solvents is approximately 0.25, 1, 0.1 mg/ml, respectively.

Methyl 5,6,7,8-tetradehydro risperidone is sparingly soluble in aqueous buffers. For maximum solubility in aqueous buffers, methyl 5,6,7,8-tetradehydro risperidone should first be dissolved in DMF and then diluted with the aqueous buffer of choice. Methyl 5,6,7,8-tetradehydro risperidone has a solubility of approximately 0.5 mg/ml in a 1:1 solution of DMF:PBS (pH 7.2) using this method. We do not recommend storing the aqueous solution for more than one day.

Risperidone (Item No. 13629) is a benzisoxazole derivative used for treating schizophrenia, and also the psychotic, affective, or behavioral symptoms associated with other disorders.<sup>1,2</sup> Methyl 5,6,7,8-tetradehydro risperidone is used as an internal standard used in the quantitative analysis of risperidone.<sup>3,4</sup>

### References

1. Colpaert, F.C. Discovering risperidone: The LSD model of psychopathology. *Nat. Rev. Drug Discov.* **2**, 315-320 (2003).
2. Rainer, M.K. Risperidone long-acting injection: A review of its long term safety and efficacy. *Neuropsychiatr. Dis. Treat.* **4**(5), 919-927 (2008).
3. Janssen, P.A., Niemegeers, C.J., Awouters, F., *et al.* Pharmacology of risperidone (R 64 766), a new antipsychotic with serotonin-S<sub>2</sub> and dopamine-D<sub>2</sub> antagonistic properties. *J. Pharmacol. Exp. Ther.* **244**, 685-693 (1988).
4. Gelders, Y.G., Heylen, S.L., Vanden Bussche, G., *et al.* Pilot clinical investigation of risperidone in the treatment of psychotic patients. *Pharmacopsychiatry* **23**, 206-211 (1990).

### Related Products

For a list of related products please visit: [www.caymanchem.com/catalog/17801](http://www.caymanchem.com/catalog/17801)

### Cayman Chemical

#### Mailing address

1180 E. Ellsworth Road  
Ann Arbor, MI  
48108 USA

#### Phone

(800) 364-9897  
(734) 971-3335

#### Fax

(734) 971-3640

#### E-Mail

[custserv@caymanchem.com](mailto:custserv@caymanchem.com)

#### Web

[www.caymanchem.com](http://www.caymanchem.com)

**WARNING: THIS PRODUCT IS FOR LABORATORY RESEARCH ONLY: NOT FOR ADMINISTRATION TO HUMANS. NOT FOR HUMAN OR VETERINARY DIAGNOSTIC OR THERAPEUTIC USE.**

#### SAFETY DATA

This material should be considered hazardous until information to the contrary becomes available. Do not ingest, swallow, or inhale. Do not get in eyes, on skin, or on clothing. Wash thoroughly after handling. This information contains some, but not all, of the information required for the safe and proper use of this material. Before use, the user must review the complete Safety Data Sheet, which has been sent via email to your institution.

#### WARRANTY AND LIMITATION OF REMEDY

Cayman Chemical Company makes **no warranty or guarantee** of any kind, whether written or oral, expressed or implied, including without limitation, any warranty of fitness for a particular purpose, suitability and merchantability, which extends beyond the description of the chemicals hereof. Cayman warrants only to the original customer that the material will meet our specifications at the time of delivery.

Cayman will carry out its delivery obligations with due care and skill. Thus, in no event will Cayman have any obligation or liability, whether in tort (including negligence) or in contract, for any direct, indirect, incidental or consequential damages, even if Cayman is informed about their possible existence.

This limitation of liability does not apply in the case of intentional acts or negligence of Cayman, its directors or its employees.

Buyer's exclusive remedy and Cayman's sole liability hereunder shall be limited to a refund of the purchase price, or at Cayman's option, the replacement, at no cost to Buyer, of all material that does not meet our specifications.

Said refund or replacement is conditioned on Buyer giving written notice to Cayman within thirty (30) days after arrival of the material at its destination. Failure of Buyer to give said notice within thirty (30) days shall constitute a waiver by Buyer of all claims hereunder with respect to said material.

For further details, please refer to our Warranty and Limitation of Remedy located on our website and in our catalog.

Copyright Cayman Chemical Company, 06/19/2015