



SZABO SCANDIC

Part of Europa Biosite

Produktinformation



Forschungsprodukte & Biochemikalien



Zellkultur & Verbrauchsmaterial



Diagnostik & molekulare Diagnostik



Laborgeräte & Service

Weitere Information auf den folgenden Seiten!
See the following pages for more information!



Lieferung & Zahlungsart

siehe unsere [Liefer- und Versandbedingungen](#)

Zuschläge

- Mindermengenzuschlag
- Trockeneiszuschlag
- Gefahrgutzuschlag
- Expressversand

SZABO-SCANDIC HandelsgmbH

Quellenstraße 110, A-1100 Wien

T. +43(0)1 489 3961-0

F. +43(0)1 489 3961-7

mail@szabo-scandic.com

www.szabo-scandic.com

[linkedin.com/company/szaboscandic](https://www.linkedin.com/company/szaboscandic) 

PRODUCT INFORMATION

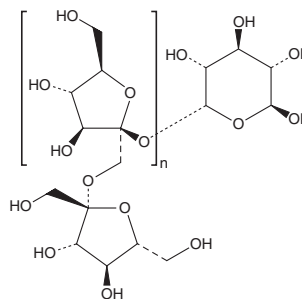


Inulin

Item No. 19229

CAS Registry No.: 9005-80-5
Formal Name: (2S,3S,4S,5R,6R)-6-(((2S,3S,4S,5R)-2-(((2R,3S,4S,5R)-3,4-dihydroxy-2,5-bis(hydroxymethyl)tetrahydrofuran-2-yl)oxy)methyl)-3,4-dihydroxy-5-(hydroxymethyl)tetrahydrofuran-2-yl)oxy)tetrahydro-2H-pyran-2,3,4,5-tetraol

MF: $(C_6H_{10}O_5)_n$
Supplied as: A crystalline solid
Storage: 4°C
Stability: ≥2 years
Item Origin: Plant/*Helianthus tuberosus*



Information represents the product specifications. Batch specific analytical results are provided on each certificate of analysis.

Laboratory Procedures

Inulin is supplied as a crystalline solid. Inulin is sparingly soluble in aqueous solutions. To enhance aqueous solubility, dilute the organic solvent solution into aqueous buffers or isotonic saline. If performing biological experiments, ensure the residual amount of organic solvent is insignificant, since organic solvents may have physiological effects at low concentrations. We do not recommend storing the aqueous solution for more than one day.

Description

Inulin is a heterogeneous collection of fructose polymers produced by plants of the *Compositae* family, most notably by chicory root.¹ It belongs to a class of dietary fibers known as fructans and functions as a natural storage carbohydrate.¹ Due to the specific structure of its $\beta(2,1)$ linkages, inulin cannot be hydrolyzed by the endogenous secretions of the human digestive system, although it can be metabolized by microbial flora of the colon.¹ As such, in terms of dietary nutrition, inulin is considered a form of soluble fiber and is sometimes categorized as a prebiotic.^{1,2} It is frequently used to measure kidney function via glomerular filtration rate, since it is neither secreted nor reabsorbed at the nephron.³

References

1. Dyssele, P. and Hoffem, D. Inulin, an alternative dietary fibre. Properties and quantitative analysis. *Eur. J. Clin. Nutr.* **49(Suppl. 3)**, S145-S152 (1995).
2. Hofer, K. and Jenewein, D. Enzymatic determination of inulin in food and dietary supplements. *Eur. Food Res. Technol.* **209**, 423-427 (1999).
3. Berg, U.B. Differences in decline in GFR with age between males and females. Reference data on clearances of inulin and PAH in potential kidney donors. *Nephrol. Dial. Transplant.* **21(9)**, 2577-2582 (2006).

WARNING

THIS PRODUCT IS FOR RESEARCH ONLY - NOT FOR HUMAN OR VETERINARY DIAGNOSTIC OR THERAPEUTIC USE.

SAFETY DATA

This material should be considered hazardous until further information becomes available. Do not ingest, inhale, get in eyes, on skin, or on clothing. Wash thoroughly after handling. Before use, the user must review the [complete](#) Safety Data Sheet, which has been sent via email to your institution.

WARRANTY AND LIMITATION OF REMEDY

Buyer agrees to purchase the material subject to Cayman's Terms and Conditions. Complete Terms and Conditions including Warranty and Limitation of Liability information can be found on our website.

Copyright Cayman Chemical Company, 10/15/2021

CAYMAN CHEMICAL

1180 EAST ELLSWORTH RD
ANN ARBOR, MI 48108 · USA

PHONE: [800] 364-9897
[734] 971-3335

FAX: [734] 971-3640

CUSTSERV@CAYMANCHEM.COM
WWW.CAYMANCHEM.COM