



SZABO SCANDIC

Part of Europa Biosite

Produktinformation



Forschungsprodukte & Biochemikalien



Zellkultur & Verbrauchsmaterial



Diagnostik & molekulare Diagnostik



Laborgeräte & Service

Weitere Information auf den folgenden Seiten!
See the following pages for more information!



Lieferung & Zahlungsart

siehe unsere [Liefer- und Versandbedingungen](#)

Zuschläge

- Mindermengenzuschlag
- Trockeneiszuschlag
- Gefahrgutzuschlag
- Expressversand

SZABO-SCANDIC HandelsgmbH

Quellenstraße 110, A-1100 Wien

T. +43(0)1 489 3961-0

F. +43(0)1 489 3961-7

mail@szabo-scandic.com

www.szabo-scandic.com

[linkedin.com/company/szaboscandic](https://www.linkedin.com/company/szaboscandic) 

PRODUCT INFORMATION



Lanreotide (acetate)

Item No. 24084

CAS Registry No.: 127984-74-1

Formal Name: 3-(2-naphthalenyl)-D-alanyl-L-cysteinyl-L-tyrosyl-D-tryptophyl-L-lysyl-L-valyl-L-cysteinyl-cyclic (2→7)-disulfide, L-threoninamide, acetate

Synonym: BIM23014

MF: $C_{54}H_{69}N_{11}O_{10}S_2 \cdot XC_2H_4O_2$

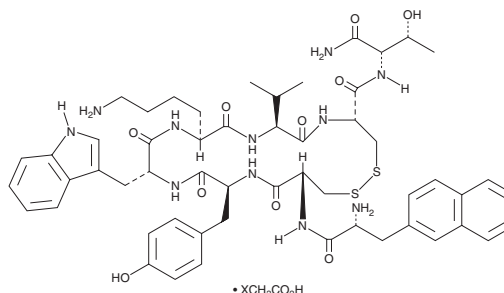
FW: 1,096.3

Purity: $\geq 98\%$

Supplied as: A solid

Storage: -20°C

Stability: ≥ 4 years



Information represents the product specifications. Batch specific analytical results are provided on each certificate of analysis.

Laboratory Procedures

Lanreotide (acetate) is supplied as a solid. A stock solution may be made by dissolving the lanreotide (acetate) in the solvent of choice, which should be purged with an inert gas. Lanreotide (acetate) is slightly soluble in DMSO and methanol.

Description

Lanreotide is a peptide analog of somatostatin that binds to somatostatin receptors (SSTRs) with a higher affinity for the somatostatin subgroup 2 receptors SST_2 , SST_3 , and SST_5 (IC_{50} s = 0.5-1.8, 43-107, and 5.6-32 nM, respectively) than for the subgroup 1 receptors, SST_1 and SST_4 (IC_{50} s = 500-2,330 and 66-2,100 nM, respectively).¹ Lanreotide (100 nM) inhibits the release of growth hormone from patient-derived pituitary adenoma cells *in vitro*.² It also inhibits tumor growth in human small cell lung cancer (SCLC) mouse xenograft models when administered at a dose of 250 μg , twice daily.³ Formulations containing lanreotide have been used in the treatment of acromegaly and neuroendocrine tumors.

References

1. Patel, Y.C. Somatostatin and its receptor family. *Front. Neuroendocrinol.* **20**(3), 157-198 (1999).
2. Shimon, I., Yan, X., Taylor, J.E., et al. Somatostatin receptor (SSTR) subtype-selective analogues differentially suppress *in vitro* growth hormone and prolactin in human pituitary adenomas. Novel potential therapy for functional pituitary tumors. *J. Clin. Invest.* **100**(9), 2386-2392 (1997).
3. Prevost, G., Bourgeois, Y., Mormont, C., et al. Characterization of somatostatin receptors and growth inhibition by the somatostatin analogue BIM23014 in small cell lung carcinoma xenograft: SCLC-6. *Life Sci.* **55**(2), 155-162 (1994).

WARNING

THIS PRODUCT IS FOR RESEARCH ONLY - NOT FOR HUMAN OR VETERINARY DIAGNOSTIC OR THERAPEUTIC USE.

SAFETY DATA

This material should be considered hazardous until further information becomes available. Do not ingest, inhale, get in eyes, on skin, or on clothing. Wash thoroughly after handling. Before use, the user must review the [complete](#) Safety Data Sheet, which has been sent via email to your institution.

WARRANTY AND LIMITATION OF REMEDY

Buyer agrees to purchase the material subject to Cayman's Terms and Conditions. Complete Terms and Conditions including Warranty and Limitation of Liability information can be found on our website.

Copyright Cayman Chemical Company, 12/16/2022

CAYMAN CHEMICAL

1180 EAST ELLSWORTH RD
ANN ARBOR, MI 48108 · USA

PHONE: [800] 364-9897
[734] 971-3335

FAX: [734] 971-3640

CUSTSERV@CAYMANCHEM.COM
WWW.CAYMANCHEM.COM