



SZABO SCANDIC

Part of Europa Biosite

Produktinformation



Forschungsprodukte & Biochemikalien



Zellkultur & Verbrauchsmaterial



Diagnostik & molekulare Diagnostik



Laborgeräte & Service

Weitere Information auf den folgenden Seiten!
See the following pages for more information!



Lieferung & Zahlungsart

siehe unsere [Liefer- und Versandbedingungen](#)

Zuschläge

- Mindermengenzuschlag
- Trockeneiszuschlag
- Gefahrgutzuschlag
- Expressversand

SZABO-SCANDIC Handels GmbH

Quellenstraße 110, A-1100 Wien

T. +43(0)1 489 3961-0

F. +43(0)1 489 3961-7

mail@szabo-scandic.com

www.szabo-scandic.com

[linkedin.com/company/szaboscandic](https://www.linkedin.com/company/szaboscandic) 

PRODUCT INFORMATION



Sulfatide (bovine) (sodium salt)

Item No. 24323

Formal Name: 1-O-(3-O-sulfo-β-D-galactopyranosyl)-ceramide, monosodium salt

Synonyms: Galactosylceramide I³-sulfate, Ganglioside SM₄, I³SO₃-GalCer, SM₄ Sulfated Galactocerebroside, 3-O-Sulfogalactosylceramide

MF: C₄₂H₈₀NO₁₁S • Na (for stearoyl)

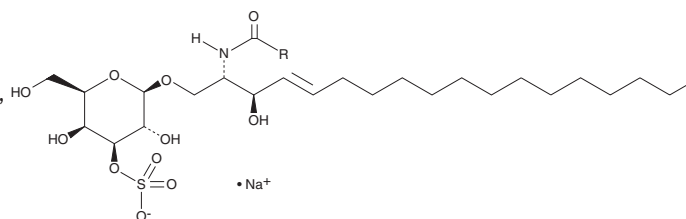
FW: 830.1

Purity: ≥98%

Supplied as: A solid

Storage: -20°C

Stability: ≥4 years



Information represents the product specifications. Batch specific analytical results are provided on each certificate of analysis.

Laboratory Procedures

Sulfatide (bovine) (sodium salt) is supplied as a solid. A stock solution may be made by dissolving the sulfatide (bovine) (sodium salt) in the solvent of choice, which should be purged with an inert gas. Sulfatide (bovine) (sodium salt) is soluble in the organic solvent DMSO.

Description

Sulfatide are endogenous sulfoglycolipids with various biological activities in the central and peripheral nervous systems, pancreas, and immune system.¹ They are produced from the combination of ceramide and UDP-galactose in the endoplasmic reticulum followed by sulfation in the Golgi apparatus. The ceramide portion contains variable fatty acid chain lengths, which are tissue- and pathology-dependent. Sulfatide are primarily found in the myelin sheath of oligodendrocytes and Schwann cells, with smaller chain lengths predominant during development and longer chain lengths predominant in mature cells.² They accumulate in the lysosome of patients with metachromatic leukodystrophy, a disorder characterized by arylsulfatase A deficiency.^{1,3} Sulfatide are also located in pancreatic β-cells and inhibit insulin release from isolated rat pancreatic islet cells, suggesting a potential role in diabetes.⁴ Sulfatide can induce inflammation in glia *in vitro* and certain sulfatides, such as C24:1 3'-sulfo-galactosylceramide, can induce an immune response *in vitro* in mouse splenocytes.^{5,6} This product contains sulfatide molecular species with primarily C24:1 fatty acyl chain lengths. As this product is derived from a natural source, there may be variations in the sphingoid backbone.

References

1. Takahashi, T. and Suzuki, T. *J. Lipid Res.* **53**(8), 1437-1450 (2012).
2. Svennerholm, L. and Ståhlberg-Stenhagen, S. *J. Lipid Res.* **9**(2), 215-225 (1968).
3. Saville, J.T., Smith, N.J.C., Fletcher, J.M., et al. *Anal. Chim. Acta* **955**, 79-85 (2017).
4. Buschard, K., Høy, M., Bokvist, K., et al. *Diabetes* **51**(8), 2514-2521 (2002).
5. Jeon, S.-B., Yoon, H.J., Park, S.-H., et al. *J. Immunol.* **181**(11), 8077-8087 (2008).
6. Zajonc, D.M., Maricic, I., Wu, D., et al. *J. Exp. Med.* **202**(11), 1517-1526 (2005).

WARNING

THIS PRODUCT IS FOR RESEARCH ONLY - NOT FOR HUMAN OR VETERINARY DIAGNOSTIC OR THERAPEUTIC USE.

SAFETY DATA

This material should be considered hazardous until further information becomes available. Do not ingest, inhale, get in eyes, on skin, or on clothing. Wash thoroughly after handling. Before use, the user must review the [complete](#) Safety Data Sheet, which has been sent via email to your institution.

WARRANTY AND LIMITATION OF REMEDY

Buyer agrees to purchase the material subject to Cayman's Terms and Conditions. Complete Terms and Conditions including Warranty and Limitation of Liability information can be found on our website.

Copyright Cayman Chemical Company, 11/11/2022

CAYMAN CHEMICAL

1180 EAST ELLSWORTH RD
ANN ARBOR, MI 48108 · USA

PHONE: [800] 364-9897
[734] 971-3335

FAX: [734] 971-3640

CUSTSERV@CAYMANCHEM.COM
WWW.CAYMANCHEM.COM