



SZABO SCANDIC

Part of Europa Biosite

Produktinformation



Forschungsprodukte & Biochemikalien



Zellkultur & Verbrauchsmaterial



Diagnostik & molekulare Diagnostik



Laborgeräte & Service

Weitere Information auf den folgenden Seiten!
See the following pages for more information!



Lieferung & Zahlungsart

siehe unsere [Liefer- und Versandbedingungen](#)

Zuschläge

- Mindermengenzuschlag
- Trockeneiszuschlag
- Gefahrgutzuschlag
- Expressversand

SZABO-SCANDIC HandelsgmbH

Quellenstraße 110, A-1100 Wien

T. +43(0)1 489 3961-0

F. +43(0)1 489 3961-7

mail@szabo-scandic.com

www.szabo-scandic.com

[linkedin.com/company/szaboscandic](https://www.linkedin.com/company/szaboscandic)



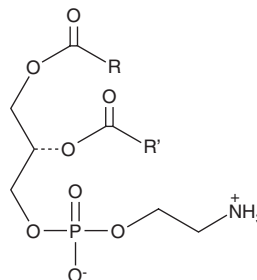
PRODUCT INFORMATION



Phosphatidylethanolamine (chicken egg)

Item No. 24332

CAS Registry No.: 39382-08-6
Synonym: PE (egg)
MF: $C_{41}H_{78}NO_8P$ (for oleoyl)
FW: 744.0
Purity: $\geq 98\%$
Supplied as: A solution in chloroform
Storage: -20°C
Stability: ≥ 2 years



Information represents the product specifications. Batch specific analytical results are provided on each certificate of analysis.

Description

Phosphatidylethanolamine is the most abundant phospholipid in prokaryotes and the second most abundant found in the membrane of mammalian, plant, and yeast cells, comprising approximately 25% of total mammalian phospholipids.¹ In the brain, phosphatidylethanolamine comprises almost half of the total phospholipids. It is synthesized mainly through the cytidine diphosphate-ethanolamine and phosphatidylserine decarboxylation pathways, which occur in the endoplasmic reticulum (ER) and mitochondrial membranes, respectively. It is a precursor in the synthesis of phosphatidylcholine and arachidonoyl ethanolamide (Item No. 90050) and is a source of ethanolamine used in various cellular functions. In *E. coli*, phosphatidylethanolamine deficiency prevents proper assembly of lactose permease, suggesting a role as a lipid chaperone.² It is a cofactor in the propagation of prions *in vitro* and can convert recombinant mammalian proteins into infectious molecules even in the absence of RNA.³ This product contains phosphatidylcholine molecular species with primarily C16:0 and C18:1 fatty acyl chain lengths.

References

1. Vance, J.E. and Tasseva, G. Formation and function of phosphatidylserine and phosphatidylethanolamine in mammalian cells. *Biochim. Biophys. Acta.* **1831(3)**, 543-554 (2013).
2. Bogdanov, M., Sun, J., Kaback, H.R., *et al.* A phospholipid acts as a chaperone in assembly of a membrane transport protein. *J. Biol. Chem.* **271(20)**, 11615-11618 (1996).
3. Deleault, N.R., Piro, J.R., Walsh, D.J., *et al.* Isolation of phosphatidylethanolamine as a solitary cofactor for prion formation in the absence of nucleic acids. *Proc. Natl. Acad. Sci. U.S.A.* **109(22)**, 8546-8551 (2012).

WARNING

THIS PRODUCT IS FOR RESEARCH ONLY - NOT FOR HUMAN OR VETERINARY DIAGNOSTIC OR THERAPEUTIC USE.

SAFETY DATA

This material should be considered hazardous until further information becomes available. Do not ingest, inhale, get in eyes, on skin, or on clothing. Wash thoroughly after handling. Before use, the user must review the [complete](#) Safety Data Sheet, which has been sent via email to your institution.

WARRANTY AND LIMITATION OF REMEDY

Buyer agrees to purchase the material subject to Cayman's Terms and Conditions. Complete Terms and Conditions including Warranty and Limitation of Liability information can be found on our website.

Copyright Cayman Chemical Company, 11/08/2022

CAYMAN CHEMICAL

1180 EAST ELLSWORTH RD
ANN ARBOR, MI 48108 · USA

PHONE: [800] 364-9897
[734] 971-3335

FAX: [734] 971-3640

CUSTSERV@CAYMANCHEM.COM
WWW.CAYMANCHEM.COM