



SZABO SCANDIC

Part of Europa Biosite

Produktinformation



Forschungsprodukte & Biochemikalien



Zellkultur & Verbrauchsmaterial



Diagnostik & molekulare Diagnostik



Laborgeräte & Service

Weitere Information auf den folgenden Seiten!
See the following pages for more information!



Lieferung & Zahlungsart

siehe unsere [Liefer- und Versandbedingungen](#)

Zuschläge

- Mindermengenzuschlag
- Trockeneiszuschlag
- Gefahrgutzuschlag
- Expressversand

SZABO-SCANDIC Handels GmbH

Quellenstraße 110, A-1100 Wien

T. +43(0)1 489 3961-0

F. +43(0)1 489 3961-7

mail@szabo-scandic.com

www.szabo-scandic.com

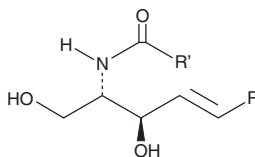
[linkedin.com/company/szaboscandic](https://www.linkedin.com/company/szaboscandic) 

PRODUCT INFORMATION

Ceramide (non-hydroxy) (bovine spinal cord)

Item No. 24833

MF: $C_{36}H_{71}NO_3$ (for stearyl)
 FW: 566.0
 Purity: $\geq 98\%$
 Supplied as: A solid
 Storage: -20°C
 Stability: ≥ 4 years



Information represents the product specifications. Batch specific analytical results are provided on each certificate of analysis.

Laboratory Procedures

Ceramide (non-hydroxy) (bovine spinal cord) is supplied as a solid. A stock solution may be made by dissolving the ceramide (non-hydroxy) (bovine spinal cord) in the solvent of choice. Ceramide (non-hydroxy) (bovine spinal cord) is soluble in ethanol and a 2:1 solution of chloroform:methanol.

Description

Ceramide is generated from sphingomyelin (Item Nos. 22674 | 24345) through activation of sphingomyelinases or through the *de novo* synthesis pathway, which requires the coordinated action of serine palmitoyl transferase and ceramide synthase. They have been shown to mediate antiproliferative responses such as apoptosis, growth arrest, differentiation, and senescence.¹ This product contains ceramide molecular species with primarily C24:1 and C24:0 fatty acyl chains. As this product is derived from a natural source, there may be variations in the sphingoid backbone.

Reference

- Ogretmen, B., Pettus, B.J., Rossi, M.J., *et al.* Biochemical mechanisms of the generation of endogenous long chain ceramide in response to exogenous short chain ceramide in the A547 human lung adenocarcinoma cell line. *J. Biol. Chem.* **277**(15), 12960-12969 (2002).

WARNING

THIS PRODUCT IS FOR RESEARCH ONLY - NOT FOR HUMAN OR VETERINARY DIAGNOSTIC OR THERAPEUTIC USE.

SAFETY DATA

This material should be considered hazardous until further information becomes available. Do not ingest, inhale, get in eyes, on skin, or on clothing. Wash thoroughly after handling. Before use, the user must review the [complete](#) Safety Data Sheet, which has been sent via email to your institution.

WARRANTY AND LIMITATION OF REMEDY

Buyer agrees to purchase the material subject to Cayman's Terms and Conditions. Complete Terms and Conditions including Warranty and Limitation of Liability information can be found on our website.

Copyright Cayman Chemical Company, 12/08/2022

CAYMAN CHEMICAL

1180 EAST ELLSWORTH RD
 ANN ARBOR, MI 48108 · USA

PHONE: [800] 364-9897
 [734] 971-3335

FAX: [734] 971-3640

CUSTSERV@CAYMANCHEM.COM
 WWW.CAYMANCHEM.COM