



SZABO SCANDIC

Part of Europa Biosite

Produktinformation



Forschungsprodukte & Biochemikalien



Zellkultur & Verbrauchsmaterial



Diagnostik & molekulare Diagnostik



Laborgeräte & Service

Weitere Information auf den folgenden Seiten!
See the following pages for more information!



Lieferung & Zahlungsart

siehe unsere [Liefer- und Versandbedingungen](#)

Zuschläge

- Mindermengenzuschlag
- Trockeneiszuschlag
- Gefahrgutzuschlag
- Expressversand

SZABO-SCANDIC HandelsgmbH

Quellenstraße 110, A-1100 Wien

T. +43(0)1 489 3961-0

F. +43(0)1 489 3961-7

mail@szabo-scandic.com

www.szabo-scandic.com

[linkedin.com/company/szaboscandic](https://www.linkedin.com/company/szaboscandic) 

PRODUCT INFORMATION

SARS-CoV-2 Papain-like Protease (recombinant)

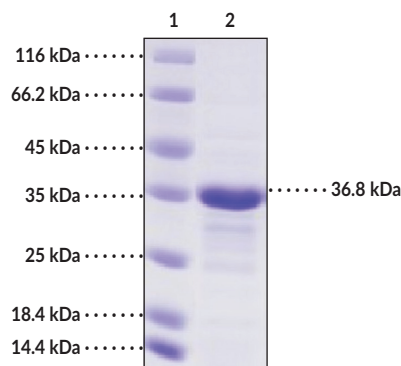
Item No. 31817

Overview and Properties

Synonyms:	2019-nCoV PL ^{pro} , COVID-19-PL ^{pro} , SARS-CoV-2 PL ^{pro} , Severe Acute Respiratory Syndrome Coronavirus 2 Papain-like Protease
Source:	Active recombinant SARS-CoV-2 N-terminal His-tagged papain-like protease expressed in <i>E. coli</i>
Amino Acids:	1,564-1,880
Molecular Weight:	36.8 kDa
Storage:	-80°C (as supplied)
Stability:	≥1 year
Purity:	≥90% estimated by SDS-PAGE
Supplied in:	Lyophilized from sterile 20 mM Tris, pH 7.4, with 500 mM sodium chloride
Activity:	Measured by its ability to cleave a fluorogenic peptide substrate, Arg-Leu-Arg-Gly-Gly-AMC (RLRGGAMC).
Specific Activity:	>80 pmols/min/μg

Information represents the product specifications. Batch specific analytical results are provided on each certificate of analysis.

Image



Lane 1: MW Markers
Lane 2: SARS-CoV-2 Papain-like Protease (recombinant)

SDS-PAGE Analysis of SARS-CoV-2 Papain-like Protease (recombinant). This protein has a calculated molecular weight of 36.8 kDa.

WARNING

THIS PRODUCT IS FOR RESEARCH ONLY - NOT FOR HUMAN OR VETERINARY DIAGNOSTIC OR THERAPEUTIC USE.

SAFETY DATA

This material should be considered hazardous until further information becomes available. Do not ingest, inhale, get in eyes, on skin, or on clothing. Wash thoroughly after handling. Before use, the user must review the complete Safety Data Sheet, which has been sent via email to your institution.

WARRANTY AND LIMITATION OF REMEDY

Buyer agrees to purchase the material subject to Cayman's Terms and Conditions. Complete Terms and Conditions including Warranty and Limitation of Liability information can be found on our website.

Copyright Cayman Chemical Company, 03/27/2024

CAYMAN CHEMICAL

1180 EAST ELLSWORTH RD

ANN ARBOR, MI 48108 · USA

PHONE: [800] 364-9897

[734] 971-3335

FAX: [734] 971-3640

CUSTSERV@CAYMANCHEM.COM

WWW.CAYMANCHEM.COM

PRODUCT INFORMATION



Description

Severe acute respiratory syndrome coronavirus 2 (SARS-CoV-2) is an enveloped positive-stranded RNA virus and the causative agent of COVID-19, a primarily respiratory illness characterized by fever, cough, and shortness of breath that can lead to life-threatening complications.¹⁻⁵ The SARS-CoV-2 genome contains approximately 30 kilobases and 14 open reading frames (ORFs) that encode four structural proteins: spike, envelope, membrane, and nucleocapsid, as well as 16 non-structural proteins and 9 accessory factors.⁶ The SARS-CoV-2 papain-like protease (PL^{pro}) is encoded within the non-structural protein 3 (nsp3) region of ORF1ab. It cleaves non-structural proteins 1-3, which, together with non-structural proteins 4-16, form the replicase complex. In addition, it reverses certain post-translational modifications, preferentially removing interferon-stimulated gene product 15 (ISG15), but also removing ubiquitin, from host proteins with both actions leading to suppression of the host innate immune response.^{7,8} SARS-CoV-2 PL^{pro} decreases IFN- α -induced ISGylation of IFN regulatory factor 3 (IRF3) in A549 cells and inhibits the type I IFN response.⁸ Inhibition of SARS-CoV-2 PL^{pro} activity reduces SARS-CoV-2 replication and viral particle release from infected cells *in vitro* and increases the level of IRF3 ISGylation. Cayman's SARS-CoV-2 Papain-like Protease (recombinant) protein can be used for enzyme activity assays. This protein consists of 324 amino acids and has a calculated molecular weight of 36.8 kDa.

References

1. Kandeel, M., Ibrahim, A., Fayez, M., *et al.* From SARS and MERS CoVs to SARS-CoV-2: Moving toward more biased codon usage in viral structural and nonstructural genes. *J. Med. Virol.* **92**(6), 660-666 (2020).
2. Lu, R., Zhao, X., Li, J., *et al.* Genomic characterisation and epidemiology of 2019 novel coronavirus: Implications for virus origins and receptor binding. *Lancet* **395**(10224), 565-574 (2020).
3. Meo, S.A., Alhowikan, A.M., Al-Khlaiwi, T., *et al.* Novel coronavirus 2019-nCoV: Prevalence, biological and clinical characteristics comparison with SARS-CoV and MERS-CoV. *Eur. Rev. Med. Pharmacol. Sci.* **24**(4), 2012-2019 (2020).
4. Klok, F.A., Kruip, M.J.H.A., van der Meer, N.J.M., *et al.* Incidence of thrombotic complications in critically ill ICU patients with COVID-19. *Thromb. Res.* **191**, 145-147 (2020).
5. Yang, F., Shi, S., Zhu, J., *et al.* Analysis of 92 deceased patients with COVID-19. *J. Med. Virol.* (2020).
6. Romano, M., Ruggiero, A., Squeglia, F., *et al.* A structural view of SARS-CoV-2 RNA replication machinery: RNA synthesis, proofreading and final capping. *Cells* **9**(5), 1267 (2020).
7. Freitas, B.T., Durie, I.A., Murray, J., *et al.* Characterization and noncovalent inhibition of the deubiquitinase and deISGylase activity of SARS-CoV-2 papain-like protease. *ACS Infect. Dis.* **6**(8), 2099-2109 (2020).
8. Shin, D., Mukherjee, R., Grewe, D., *et al.* Papain-like protease regulates SARS-CoV-2 viral spread and innate immunity. *Nature* (2020).

CAYMAN CHEMICAL

1180 EAST ELLSWORTH RD
ANN ARBOR, MI 48108 · USA
PHONE: [800] 364-9897
[734] 971-3335
FAX: [734] 971-3640
CUSTSERV@CAYMANCHEM.COM
WWW.CAYMANCHEM.COM