



SZABO SCANDIC

Part of Europa Biosite

Produktinformation



Forschungsprodukte & Biochemikalien



Zellkultur & Verbrauchsmaterial



Diagnostik & molekulare Diagnostik



Laborgeräte & Service

Weitere Information auf den folgenden Seiten!
See the following pages for more information!



Lieferung & Zahlungsart

siehe unsere [Liefer- und Versandbedingungen](#)

Zuschläge

- Mindermengenzuschlag
- Trockeneiszuschlag
- Gefahrgutzuschlag
- Expressversand

SZABO-SCANDIC HandelsgmbH

Quellenstraße 110, A-1100 Wien

T. +43(0)1 489 3961-0

F. +43(0)1 489 3961-7

mail@szabo-scandic.com

www.szabo-scandic.com

[linkedin.com/company/szaboscandic](https://www.linkedin.com/company/szaboscandic) 

PRODUCT INFORMATION



(±)9,10-DiHODE

Item No. 35856

CAS Registry No.: 1400693-71-1
Formal Name: 9R,10R-dihydroxy-12Z,15Z-octadecadienoic acid
Synonyms: (±)9,10-dihydroxy-12(Z),15(Z)-ODE,
(±)9,10-dihydroxy-cis-12,15-Octadecadienoic Acid,
(±)9,10-Dihydroxyoctadecadienoic Acid,
FA 18:2;O2

MF: C₁₈H₃₂O₄

FW: 312.4

Purity: ≥95%

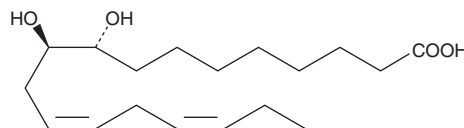
Supplied as: A solution in ethanol

Storage: -20°C

Stability: ≥3 years

Special Conditions: Oxygen sensitive

Information represents the product specifications. Batch specific analytical results are provided on each certificate of analysis.



Laboratory Procedures

(±)9,10-DiHODE is supplied as a solution in ethanol. To change the solvent, simply evaporate the ethanol under a gentle stream of nitrogen and immediately add the solvent of choice. (±)9,10-DiHODE is sparingly soluble (1-10 mg/ml) in chloroform and dichloromethane.

Description

(±)9,10-DiHODE is an α-linolenic acid-derived oxylipin.^{1,2} It is formed from α-linolenic acid (Item Nos. 90210 | 21910) by cytochrome P450s (CYPs). Corpora luteal levels of 9,10-DiHODE are increased in pregnant cattle and low plasma levels of 9,10-DiHODE are associated with preterm labor before 34 weeks of gestation.^{2,3} Serum levels of 9,10-DiHODE are decreased in patients with hyperlipidemia.¹

References

- Schuchardt, J.P., Schmidt, S., Kressel, G., *et al.* Comparison of free serum oxylipin concentrations in hyper- vs. normolipidemic men. *Prostaglandins Leukot. Essent. Fatty Acids* **89(1)**, 19-29 (2013).
- Svenvik, M., Raffetseder, J., Brudin, L., *et al.* Plasma oxylipin levels associated with preterm birth in preterm labor. *Prostaglandins Leukot. Essent. Fatty Acids* **166**, 102251 (2021).
- Owen, M.P.T., Northrop, E.J., Rich, J.J.J., *et al.* Oxylipin concentrations in bovine corpora lutea during maternal recognition of pregnancy. *Theriogenology* **142**, 384-389 (2020).

WARNING

THIS PRODUCT IS FOR RESEARCH ONLY - NOT FOR HUMAN OR VETERINARY DIAGNOSTIC OR THERAPEUTIC USE.

SAFETY DATA

This material should be considered hazardous until further information becomes available. Do not ingest, inhale, get in eyes, on skin, or on clothing. Wash thoroughly after handling. Before use, the user must review the [complete](#) Safety Data Sheet, which has been sent via email to your institution.

WARRANTY AND LIMITATION OF REMEDY

Buyer agrees to purchase the material subject to Cayman's Terms and Conditions. Complete Terms and Conditions including Warranty and Limitation of Liability information can be found on our website.

Copyright Cayman Chemical Company, 03/27/2024

CAYMAN CHEMICAL

1180 EAST ELLSWORTH RD

ANN ARBOR, MI 48108 · USA

PHONE: [800] 364-9897

[734] 971-3335

FAX: [734] 971-3640

CUSTSERV@CAYMANCHEM.COM

WWW.CAYMANCHEM.COM