



SZABO SCANDIC

Part of Europa Biosite

Produktinformation



Forschungsprodukte & Biochemikalien



Zellkultur & Verbrauchsmaterial



Diagnostik & molekulare Diagnostik



Laborgeräte & Service

Weitere Information auf den folgenden Seiten!
See the following pages for more information!



Lieferung & Zahlungsart

siehe unsere [Liefer- und Versandbedingungen](#)

Zuschläge

- Mindermengenzuschlag
- Trockeneiszuschlag
- Gefahrgutzuschlag
- Expressversand

SZABO-SCANDIC HandelsgmbH

Quellenstraße 110, A-1100 Wien

T. +43(0)1 489 3961-0

F. +43(0)1 489 3961-7

mail@szabo-scandic.com

www.szabo-scandic.com

[linkedin.com/company/szaboscandic](https://www.linkedin.com/company/szaboscandic) 

PRODUCT INFORMATION



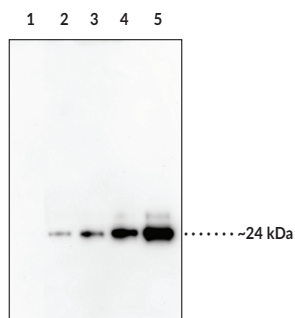
Citrullinated Interleukin-6 Polyclonal Antibody

Item No. 36178

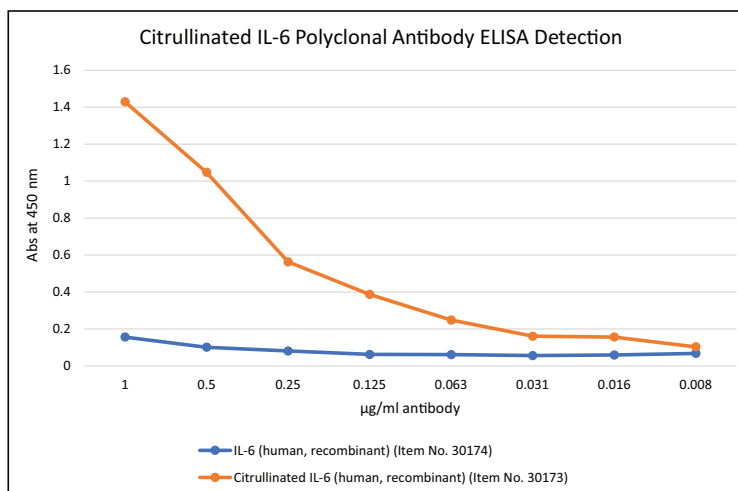
Overview and Properties

Contents: This vial contains 500 µl of peptide affinity-purified polyclonal antibody.
Synonyms: B Cell Stimulatory Factor 2, BSF-2, CDF, CTL Differentiation Factor, HGF, Hybridoma Growth Factor, IFN-β2, IL-6, Interferon-β2
Immunogen: Synthetic citrullinated peptide corresponding to an internal region of human IL-6
Cross Reactivity: (+) Citrullinated IL-6
Species Reactivity: (+) Human; (-) Others not tested
Uniprot No.: P05231
Form: Liquid
Storage: -20°C (as supplied)
Stability: ≥1 year
Storage Buffer: PBS, pH 7.2, with 50% glycerol and 0.02% sodium azide
Host: Rabbit
Applications: ELISA and Western blot (WB); the recommended starting dilution is 1:200 for ELISA and WB. Other applications were not tested, therefore optimal working concentration/dilution should be determined empirically.

Images



Lane 1: IL-6 (human, recombinant) (Item No. 30174) (100 ng)
Lane 2: Citrullinated IL-6 (human, recombinant) (Item No. 30173) (25 ng)
Lane 3: Citrullinated IL-6 (human, recombinant) (Item No. 30173) (50 ng)
Lane 4: Citrullinated IL-6 (human, recombinant) (Item No. 30173) (100 ng)
Lane 5: Citrullinated IL-6 (human, recombinant) (Item No. 30173) (200 ng)



WARNING
THIS PRODUCT IS FOR RESEARCH ONLY - NOT FOR HUMAN OR VETERINARY DIAGNOSTIC OR THERAPEUTIC USE.

SAFETY DATA
This material should be considered hazardous until further information becomes available. Do not ingest, inhale, get in eyes, on skin, or on clothing. Wash thoroughly after handling. Before use, the user must review the [complete](#) Safety Data Sheet, which has been sent via email to your institution.

WARRANTY AND LIMITATION OF REMEDY
Buyer agrees to purchase the material subject to Cayman's Terms and Conditions. Complete Terms and Conditions including Warranty and Limitation of Liability information can be found on our website.

Copyright Cayman Chemical Company, 07/12/2022

CAYMAN CHEMICAL
1180 EAST ELLSWORTH RD
ANN ARBOR, MI 48108 · USA
PHONE: [800] 364-9897
[734] 971-3335
FAX: [734] 971-3640
CUSTSERV@CAYMANCHEM.COM
WWW.CAYMANCHEM.COM

PRODUCT INFORMATION



Description

Interleukin-6 (IL-6) is a cytokine with roles in both the initiation and resolution of inflammatory responses.^{1,2} IL-6 is produced in response to an inflammatory event, induces recruitment of neutrophils to the site of inflammation, and signals through the membrane-bound IL-6 receptor (IL-6R) to upregulate the synthesis of acute phase proteins, lipolysis in the liver, and induced differentiation of T and B cells. Following initiation of this classical signaling pathway, a soluble form of IL-6R (sIL-6R) is released from neutrophils to promote recruitment of monocytes and macrophages, induction of fever *via* IL-6 action in the hypothalamus, and production of anti-inflammatory M2 macrophages to initiate tissue repair. Production of IL-6 is dysregulated in various chronic inflammatory diseases, including rheumatoid arthritis, Castleman disease, polymyalgia rheumatica, and giant cell arteritis.³ It also induces tumor growth and metastasis *via* activation of JAK/STAT signaling.⁴ Recombinant human IL-6 can be citrullinated at arginine residues by protein arginine deiminase 4 (PAD4) *in vitro*.⁵ Citrullinated IL-6 and anti-citrullinated peptide antibodies (ACPAs) reactive with citrullinated IL-6 have been found in synovial fluid and sera, respectively, from patients with rheumatoid arthritis. Cayman's Citrullinated Interleukin-6 Polyclonal Antibody can be used for ELISA and Western blot (WB) applications. The antibody recognizes citrullinated IL-6 at ~24 kDa from human samples.

References

1. Del Giudice, M. and Gangestad, S.W. Rethinking IL-6 and CRP: Why they are more than inflammatory biomarkers, and why it matters. *Brain Behav. Immun.* **70**, 61-75 (2018).
2. Rose-John, S. Interleukin-6 family cytokines. *Cold Spring Harb. Perspect. Biol.* **10(2)**, (2018).
3. Schett, G. Physiological effects of modulating the interleukin-6 axis. *Rheumatology (Oxford)* **57(suppl 2)**, ii43-ii50 (2018).
4. Lacina, L., Brábek, J., Král, V., *et al.* Interleukin-6: A molecule with complex biological impact in cancer. *Histol. Histopathol.* **34(2)**, 125-136 (2019).
5. Lu, C., Ohara, R., Campbell, P., *et al.* Citrullination of interleukin 6 augments its pro-inflammatory capacity and signaling potency through interleukin-6 receptor in rheumatoid arthritis [abstract]. *Arthritis Rheumatol.* **71 (suppl 10)** (2019).

CAYMAN CHEMICAL
1180 EAST ELLSWORTH RD
ANN ARBOR, MI 48108 · USA
PHONE: [800] 364-9897
[734] 971-3335
FAX: [734] 971-3640
CUSTSERV@CAYMANCHEM.COM
WWW.CAYMANCHEM.COM