



# SZABO SCANDIC

Part of Europa Biosite

## Produktinformation



Forschungsprodukte & Biochemikalien



Zellkultur & Verbrauchsmaterial



Diagnostik & molekulare Diagnostik



Laborgeräte & Service

Weitere Information auf den folgenden Seiten!  
See the following pages for more information!



### Lieferung & Zahlungsart

siehe unsere [Liefer- und Versandbedingungen](#)

### Zuschläge

- Mindermengenzuschlag
- Trockeneiszuschlag
- Gefahrgutzuschlag
- Expressversand

### SZABO-SCANDIC HandelsgmbH

Quellenstraße 110, A-1100 Wien

T. +43(0)1 489 3961-0

F. +43(0)1 489 3961-7

[mail@szabo-scandic.com](mailto:mail@szabo-scandic.com)

[www.szabo-scandic.com](http://www.szabo-scandic.com)

[linkedin.com/company/szaboscandic](https://www.linkedin.com/company/szaboscandic) 

# PRODUCT INFORMATION

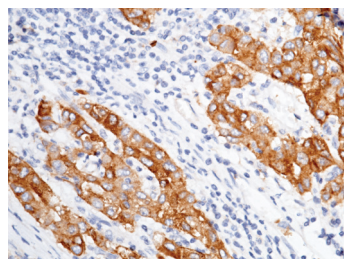
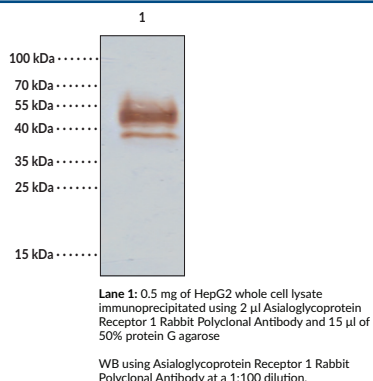
## Asialoglycoprotein Receptor 1 Rabbit Polyclonal Antibody

Item No. 38095

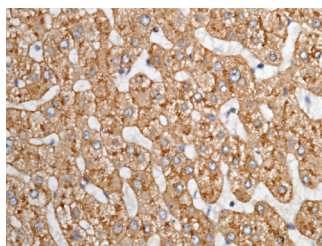
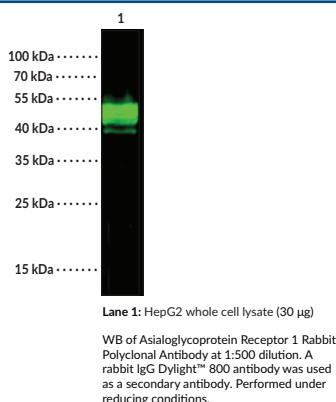
### Overview and Properties

<b>Contents:</b>	This vial contains 50, 100, or 200 µl of protein A-affinity purified polyclonal antibody.
<b>Synonyms:</b>	ASGPR1, ASGR1, C-type Lectin Domain Family 4 Member H1, CLEC4H1, Hepatic Lectin H1, HL-1
<b>Immunogen:</b>	Recombinant human asialoglycoprotein receptor 1
<b>Cross Reactivity:</b>	(+) Asialoglycoprotein receptor 1
<b>Species Reactivity:</b>	(+) Human; other species not tested
<b>Molecular Weight:</b>	33 kDa
<b>Form:</b>	Liquid
<b>Storage:</b>	-80°C (as supplied)
<b>Stability:</b>	≥1 year
<b>Storage Buffer:</b>	0.2 µm filtered solution in PBS
<b>Host:</b>	Rabbit
<b>Isotype:</b>	IgG
<b>Applications:</b>	ELISA, Immunohistochemistry-paraffin (IHC-P); Immunoprecipitation (IP), and Western blot (WB); the recommended starting dilution is 1:5,000-1:10,000 for ELISA and 1:500-1:2,000 for IP and WB. The recommended concentration is 1-4 µl/mg of lysate for IP. Other applications were not tested, therefore optimal working concentration/dilution should be determined empirically.

### Images



Immunohistochemical staining of formalin-fixed and paraffin-embedded human ASGR1 in human hepatoma cells using Asialoglycoprotein Receptor 1 Rabbit Polyclonal Antibody at a dilution of 1:1,000.



Immunohistochemical staining of formalin-fixed and paraffin-embedded human ASGR1 in human cirrhosis tissue using Asialoglycoprotein Receptor 1 Rabbit Polyclonal Antibody at a dilution of 1:1,000.

**WARNING**  
THIS PRODUCT IS FOR RESEARCH ONLY - NOT FOR HUMAN OR VETERINARY DIAGNOSTIC OR THERAPEUTIC USE.

**SAFETY DATA**  
This material should be considered hazardous until further information becomes available. Do not ingest, inhale, get in eyes, on skin, or on clothing. Wash thoroughly after handling. Before use, the user must review the [complete](#) Safety Data Sheet, which has been sent via email to your institution.

**WARRANTY AND LIMITATION OF REMEDY**  
Buyer agrees to purchase the material subject to Cayman's Terms and Conditions. Complete Terms and Conditions including Warranty and Limitation of Liability information can be found on our website.

Copyright Cayman Chemical Company, 03/13/2023

**CAYMAN CHEMICAL**  
1180 EAST ELLSWORTH RD  
ANN ARBOR, MI 48108 · USA  
PHONE: [800] 364-9897  
[734] 971-3335  
FAX: [734] 971-3640  
CUSTSERV@CAYMANCHEM.COM  
WWW.CAYMANCHEM.COM

# PRODUCT INFORMATION



## Description

Asialoglycoprotein receptor 1 is a calcium-dependent C-type lectin receptor.<sup>1</sup> It is composed of a carbohydrate recognition domain, which primarily recognizes galactosides such as D-galactose and N-acetyl-D-galactosamine (GalNAc), stalk region, transmembrane domain, and cytoplasmic domain. Asialoglycoprotein receptor 1 is expressed in hepatocytes, and alternative splicing produces both long and short isoforms.<sup>2</sup> The long isoform localizes to the cell membrane, while the short isoform exists as a soluble form that is both secreted and found in the cytoplasm. The asialoglycoprotein receptor is a trimer that is commonly formed by two H1 subunits and one H2 subunit.<sup>1</sup> It is involved in the clearance of desialylated serum glycoproteins and hepatotropic virus entry via endocytosis. Ectopic expression of the gene encoding asialoglycoprotein receptor 1 (ASGR1) increases binding of hepatitis E virus to cells *in vitro*.<sup>3</sup> Knockdown of ASGR1 increases survival and decreases liver injury and plasma TNF- $\alpha$  and IL-1 $\beta$  levels in a mouse model of sepsis.<sup>4</sup>

## References

1. Das, S., Kudale, P., Dandekar, P., *et al.* Asialoglycoprotein receptor and targeting strategies. *Targeted intracellular drug delivery by receptor mediated endocytosis*. Devarajan, P., Dandekar, P., and D'Souza, A.A., editors, 1<sup>st</sup> edition, Springer (2019).
2. Liu, J., Hu, B., Yang, Y., *et al.* A new splice variant of the major subunit of human asialoglycoprotein receptor encodes a secreted form in hepatocytes. *PLoS One* **5**(9), e12934 (2010).
3. Zhang, L., Tian, Y., Wen, Z., *et al.* Asialoglycoprotein receptor facilitates infection of PLC/PRF/5 cells by HEV through interaction with ORF2. *J. Med. Virol.* **88**(12), 2186-2195 (2016).
4. Shi, R., Wang, J., Zhang, Z., *et al.* ASGR1 promotes liver injury in sepsis by modulating monocyte-to-macrophage differentiation via NF- $\kappa$ B/ATF5 pathway. *Life Sci.* **315**, 121339 (2023).

CAYMAN CHEMICAL  
1180 EAST ELLSWORTH RD  
ANN ARBOR, MI 48108 · USA  
PHONE: [800] 364-9897  
[734] 971-3335  
FAX: [734] 971-3640  
CUSTSERV@CAYMANCHEM.COM  
WWW.CAYMANCHEM.COM