



SZABO SCANDIC

Part of Europa Biosite

Produktinformation



Forschungsprodukte & Biochemikalien



Zellkultur & Verbrauchsmaterial



Diagnostik & molekulare Diagnostik



Laborgeräte & Service

Weitere Information auf den folgenden Seiten!
See the following pages for more information!



Lieferung & Zahlungsart

siehe unsere [Liefer- und Versandbedingungen](#)

Zuschläge

- Mindermengenzuschlag
- Trockeneiszuschlag
- Gefahrgutzuschlag
- Expressversand

SZABO-SCANDIC HandelsgmbH

Quellenstraße 110, A-1100 Wien

T. +43(0)1 489 3961-0

F. +43(0)1 489 3961-7

mail@szabo-scandic.com

www.szabo-scandic.com

[linkedin.com/company/szaboscandic](https://www.linkedin.com/company/szaboscandic) 

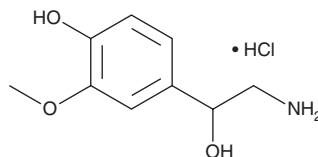
PRODUCT INFORMATION



Normetanephrine (hydrochloride)

Item No. 38792

CAS Registry No.: 1011-74-1
Formal Name: α -(aminomethyl)-4-hydroxy-3-methoxy-benzenemethanol, monohydrochloride
Synonyms: DL-Normetanephrine, (\pm)-Normetadrenaline, NMN, α -(aminomethyl)Vanillyl Alcohol
MF: $C_9H_{13}NO_3 \cdot HCl$
FW: 219.7
Purity: $\geq 95\%$
Supplied as: A solid
Storage: $-20^\circ C$
Stability: ≥ 4 years



Information represents the product specifications. Batch specific analytical results are provided on each certificate of analysis.

Laboratory Procedures

Normetanephrine (hydrochloride) is supplied as a solid. A stock solution may be made by dissolving the normetanephrine (hydrochloride) in the solvent of choice, which should be purged with an inert gas. Normetanephrine (hydrochloride) is soluble in DMSO. Normetanephrine (hydrochloride) is slightly soluble in acetonitrile and water.

Description

Normetanephrine is an active metabolite of norepinephrine.¹⁻³ It is formed from norepinephrine by catechol-O-methyltransferase (COMT).¹ Normetanephrine induces contractions in isolated rabbit aortic strips in a concentration-dependent manner.² It inhibits norepinephrine uptake in isolated rat heart ($IC_{50} = 200 \mu M$).³ Plasma levels of normetanephrine are increased in patients with von Hippel-Lindau disease and pheochromocytomas compared with patients with von Hippel-Lindau disease without pheochromocytomas.⁴ It has been used as a marker of authentic human urine specimens.⁵

References

1. Goldstein, D.S., Eisenhofer, G., and Kopin, I.J. Sources and significance of plasma levels of catechols and their metabolites in humans. *J. Pharm. Exp. Ther.* **305(3)**, 800-811 (2003).
2. Pruss, P., Maengwyn-Davies, G.D., and Wurzel, M. Comparison of effects of aromatic sympathomimetic amines on rabbit aortic strip and rabbit blood pressure *J. Pharmacol. Exp. Ther.* **147**, 76-85 (1965).
3. Burgen, A.S. and Iversen, L.L. The inhibition of noradrenaline uptake by sympathomimetic amines in the rat isolated heart. *Br. J. Pharmacol. Chemother.* **25(1)**, 34-49 (1965).
4. Eisenhofer, G., Lenders, J.W., Linehan, W.M., et al. Plasma normetanephrine and metanephrine for detecting pheochromocytoma in von Hippel-Lindau disease and multiple endocrine neoplasia type 2. *N. Engl. J. Med.* **340(24)**, 1872-1879 (1999).
5. Goggin, M.M., Tann, C.-M., Miller, A., et al. Catching fakes: New markers of urine sample validity and invalidity. *J. Anal. Toxicol.* **41(2)**, 121-126 (2016).

WARNING

THIS PRODUCT IS FOR RESEARCH ONLY - NOT FOR HUMAN OR VETERINARY DIAGNOSTIC OR THERAPEUTIC USE.

SAFETY DATA

This material should be considered hazardous until further information becomes available. Do not ingest, inhale, get in eyes, on skin, or on clothing. Wash thoroughly after handling. Before use, the user must review the complete Safety Data Sheet, which has been sent via email to your institution.

WARRANTY AND LIMITATION OF REMEDY

Buyer agrees to purchase the material subject to Cayman's Terms and Conditions. Complete Terms and Conditions including Warranty and Limitation of Liability information can be found on our website.

Copyright Cayman Chemical Company, 01/11/2024

CAYMAN CHEMICAL

1180 EAST ELLSWORTH RD
ANN ARBOR, MI 48108 · USA

PHONE: [800] 364-9897

[734] 971-3335

FAX: [734] 971-3640

CUSTSERV@CAYMANCHEM.COM
WWW.CAYMANCHEM.COM