



SZABO SCANDIC

Part of Europa Biosite

Produktinformation



Forschungsprodukte & Biochemikalien



Zellkultur & Verbrauchsmaterial



Diagnostik & molekulare Diagnostik



Laborgeräte & Service

Weitere Information auf den folgenden Seiten!
See the following pages for more information!



Lieferung & Zahlungsart

siehe unsere [Liefer- und Versandbedingungen](#)

Zuschläge

- Mindermengenzuschlag
- Trockeneiszuschlag
- Gefahrgutzuschlag
- Expressversand

SZABO-SCANDIC HandelsgmbH

Quellenstraße 110, A-1100 Wien

T. +43(0)1 489 3961-0

F. +43(0)1 489 3961-7

mail@szabo-scandic.com

www.szabo-scandic.com

[linkedin.com/company/szaboscandic](https://www.linkedin.com/company/szaboscandic) 

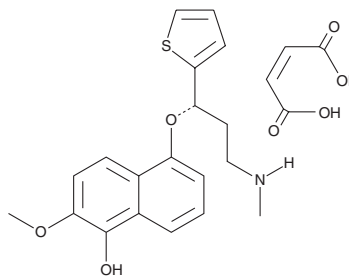
PRODUCT INFORMATION



(S)-5-hydroxy-6-methoxy Duloxetine (maleate)

Item No. 39381

Formal Name: 2-methoxy-5-[(1S)-3-(methylamino)-1-(2-thienyl)propoxy]-1-naphthalenol, maleate
MF: C₁₉H₂₁NO₃S • C₄H₄O₄
FW: 459.5
Purity: ≥95%
Supplied as: A solid
Storage: -20°C
Stability: ≥4 years



Information represents the product specifications. Batch specific analytical results are provided on each certificate of analysis.

Laboratory Procedures

(S)-5-hydroxy-6-methoxy Duloxetine (maleate) is supplied as a solid. A stock solution may be made by dissolving the (S)-5-hydroxy-6-methoxy duloxetine (maleate) in the solvent of choice, which should be purged with an inert gas. (S)-5-hydroxy-6-methoxy Duloxetine (maleate) is soluble in ethanol, methanol, DMSO, and dimethyl formamide.

Description

(S)-5-hydroxy-6-methoxy Duloxetine is an active metabolite of the serotonin (5-HT) and norepinephrine reuptake inhibitor (S)-duloxetine (Item No. 14317).^{1,2} It is formed from (S)-duloxetine via a 5- or 6-hydroxy duloxetine intermediate, which is formed by the cytochrome P450 (CYP) isoforms CYP1A2 and CYP2D6, and a catechol duloxetine intermediate.² (S)-5-hydroxy-6-methoxy Duloxetine inhibits the 5-HT transporter (SERT), norepinephrine transporter (NET), and dopamine transporter (DAT) in lipid membranes (K_s = 266, 920, and 2,814 nM, respectively, for the human transporters).¹

References

1. Kuo, F., Gillespie, T.A., Kulanthaivel, P., *et al.* Synthesis and biological activity of some known and putative duloxetine metabolites. *Bioorg. Med. Chem.* **14(13)**, 3481-3486 (2004).
2. Knadler, M.P., Lobo, E., Chappell, J., *et al.* Duloxetine: Clinical pharmacokinetics and drug interactions. *Clin. Pharmacokinet.* **50(5)**, 281-294 (2011).

WARNING

THIS PRODUCT IS FOR RESEARCH ONLY - NOT FOR HUMAN OR VETERINARY DIAGNOSTIC OR THERAPEUTIC USE.

SAFETY DATA

This material should be considered hazardous until further information becomes available. Do not ingest, inhale, get in eyes, on skin, or on clothing. Wash thoroughly after handling. Before use, the user must review the complete Safety Data Sheet, which has been sent via email to your institution.

WARRANTY AND LIMITATION OF REMEDY

Buyer agrees to purchase the material subject to Cayman's Terms and Conditions. Complete Terms and Conditions including Warranty and Limitation of Liability information can be found on our website.

Copyright Cayman Chemical Company, 12/20/2023

CAYMAN CHEMICAL

1180 EAST ELLSWORTH RD
ANN ARBOR, MI 48108 · USA

PHONE: [800] 364-9897
[734] 971-3335

FAX: [734] 971-3640

CUSTSERV@CAYMANCHEM.COM
WWW.CAYMANCHEM.COM