



SZABO SCANDIC

Part of Europa Biosite

Produktinformation



Forschungsprodukte & Biochemikalien



Zellkultur & Verbrauchsmaterial



Diagnostik & molekulare Diagnostik



Laborgeräte & Service

Weitere Information auf den folgenden Seiten!
See the following pages for more information!



Lieferung & Zahlungsart

siehe unsere [Liefer- und Versandbedingungen](#)

Zuschläge

- Mindermengenzuschlag
- Trockeneiszuschlag
- Gefahrgutzuschlag
- Expressversand

SZABO-SCANDIC HandelsgmbH

Quellenstraße 110, A-1100 Wien

T. +43(0)1 489 3961-0

F. +43(0)1 489 3961-7

mail@szabo-scandic.com

www.szabo-scandic.com

[linkedin.com/company/szaboscandic](https://www.linkedin.com/company/szaboscandic) 

Technically
Speaking

CEDARLANE[®] 
www.cedarlanelabs.com

Conveniently Delivering You Today's Innovations
for the Science of Tomorrow™

**Purified Rabbit Anti-Mouse Progesterone Receptor
Polyclonal Antibody**

CL8832AP
Lot #: 153221

DESCRIPTION:

Progesterone receptors (PRs) are nuclear hormone receptors of the NR3C class, which also includes mineralocorticoid, glucocorticoid and androgen receptors. They exist in the cytosol as homodimers coupled to heat shock proteins. Once bound to progesterone the heat shock proteins are shed and the activated complex enters the nucleus where it binds directly to DNA and regulates transcription of target genes. Progesterone receptors can also signal by binding to other proteins, mainly with transcription factors such as NF-kappaB, AP-1 or STAT.

Progesterone receptors are found in the female reproductive tract, mammary glands, brain and pituitary gland and receptor expression is induced by estrogen. Several functions of progesterone receptors include ovulation, implantation, mammary gland development and maintenance of pregnancy.

PRESENTATION:

100 µg purified IgG buffered in PBS and 0.02% NaN₃. (Purified from serum via Affinity Chromatography). For maximum recovery of contents, spin down tube before use.

STORAGE/STABILITY:

Store at + 4°C. For long term storage, aliquot and freeze unused portion at -20°C in volumes appropriate for single usage. Avoid freeze/thaw cycles.

SPECIFICATION:

Immunogen: 15 amino acid synthetic peptide located within the first 120 aa of mouse Progesterone Receptor.

Specificity: This antibody is specific for mouse progesterone receptor. It is also specific for rat progesterone receptor based on sequence identity.

IgG Class: Rabbit IgG

Application: This antibody is suitable for use in Western Blot (1-3 µg/ml), ELISA and Immunohistochemistry with FFPE sections (10 µg/mL). This antibody has not been tested in other applications.

Continued Overleaf.....

Visit our website for your local distributor.

CEDARLANE[®] 

www.cedarlanelabs.com

An ISO 9001:2000 and ISO 13485:2003
registered company.

In CANADA: Toll Free: 1-800-268-5058

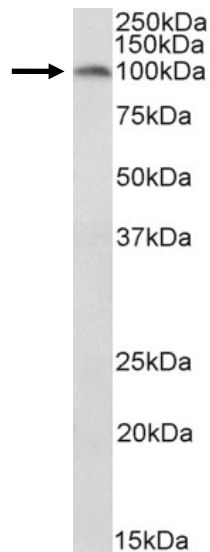
4410 Paletta Court, Burlington, ON L7L 5R2 ph: (289) 288-0001, fax: (289) 288-0020
e-mail: general@cedarlanelabs.com

In the USA: Toll Free: 1-800-721-1644

1210 Turrentine Street, Burlington, NC 27215 ph: (336) 513-5135, fax: (336) 513-5138
e-mail: service@cedarlanelabs.com

TEST RESULTS:

Western Blot:



CL8832AP (2 μ g/ml) staining of mouse uterus lysate (35 μ g protein in RIPA buffer). Primary incubation was 1 hour. Detected by chemiluminescence. Predicted MW of mouse progesterone receptor is ~99 KDa.

N.B. Appropriate control samples should always be included in any labeling studies.

*** For optimal results in various applications, it is recommended that each investigator determine dilutions appropriate for individual use.**

REFERENCES:

1. Novac N, Heinzl T. (2004) Nuclear receptors: overview and classification. *Curr Drug Targets Inflamm Allergy*. 3(4):335-46.
2. Gadkar-Sable S, Shah C, Rosario G, Sachdeva G, Puri C. (2005) Progesterone receptors: various forms and functions in reproductive tissues. *Front Biosci*. 10:2118-30.
3. Wetendorf M, DeMayo FJ. (2014) Progesterone receptor signaling in the initiation of pregnancy and preservation of a healthy uterus. *Int J Dev Biol*. 58(2-4):95-106.

For Research Use Only