



SZABO SCANDIC

Part of Europa Biosite

Produktinformation



Forschungsprodukte & Biochemikalien



Zellkultur & Verbrauchsmaterial



Diagnostik & molekulare Diagnostik



Laborgeräte & Service

Weitere Information auf den folgenden Seiten!
See the following pages for more information!



Lieferung & Zahlungsart

siehe unsere [Liefer- und Versandbedingungen](#)

Zuschläge

- Mindermengenzuschlag
- Trockeneiszuschlag
- Gefahrgutzuschlag
- Expressversand

SZABO-SCANDIC HandelsgmbH

Quellenstraße 110, A-1100 Wien

T. +43(0)1 489 3961-0

F. +43(0)1 489 3961-7

mail@szabo-scandic.com

www.szabo-scandic.com

[linkedin.com/company/szaboscandic](https://www.linkedin.com/company/szaboscandic) 

Technically
Speaking

CEDARLANE[®] 
www.cedarlanelabs.com

Conveniently Delivering You Today's Innovations
for the Science of Tomorrow™

Anti-Human VGLUT1 Polyclonal Antibody

CL8882AP
Lot: 168221

DESCRIPTION:

Vesicular glutamate transporter 1 (VGLUT1) is a transporter protein that belongs to the major facilitator superfamily. It mediates the uptake of glutamate into synaptic vesicles at presynaptic nerve terminals of excitatory neural cells. VGLUT 1 is also involved in the sodium-dependent transport of inorganic phosphate across synaptic vesicles. It is expressed in a number of regions of the brain including amygdala, cerebellum, cerebral cortex, hippocampus, frontal lobe, medulla, occipital lobe, putamen and temporal lobe¹.

PRESENTATION:

100 µg purified IgG buffered in PBS and 0.02% NaN₃. (Purified from serum via Affinity Chromatography). For maximum recovery of contents, spin down tube before use.

STORAGE/STABILITY:

Store at + 4°C. For long term storage, aliquot and freeze unused portion at -20°C in volumes appropriate for single usage. Avoid freeze/thaw cycles.

SPECIFICATION:

Immunogen: 15 amino acid synthetic peptide located at the N-terminus of human VGLUT 1.

Specificity: This antibody is specific for human VGLUT 1.

IgG Class: Rabbit IgG

Application: This antibody is suitable for use in ELISA and Western Blot (1µg/mL). This antibody has not been tested in other applications.

Continued Overleaf.....

Visit our website for your local distributor.

CEDARLANE[®] 

www.cedarlanelabs.com

An ISO 9001:2000 and ISO 13485:2003
registered company.

In CANADA: Toll Free: 1-800-268-5058

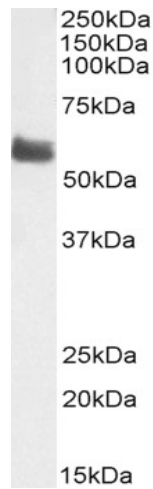
4410 Paletta Court, Burlington, ON L7L 5R2 ph: (289) 288-0001, fax: (289) 288-0020
e-mail: general@cedarlanelabs.com

In the USA: Toll Free: 1-800-721-1644

1210 Turrentine Street, Burlington, NC 27215 ph: (336) 513-5135, fax: (336) 513-5138
e-mail: service@cedarlanelabs.com

TEST RESULTS:

Western Blot:



CL8882AP (1 μ g/ml) staining of a human brain (cerebellum) lysate (35 μ g protein in RIPA buffer). Primary incubation was 1 hour. Detected by chemiluminescence.

N.B. Appropriate control samples should always be included in any labeling studies.

* For optimal results in various applications, it is recommended that each investigator determine dilutions appropriate for individual use.

REFERENCES:

1. Aihara Y, et al. (2000) **Molecular cloning of a novel brain-type Na(+)-dependent inorganic phosphate cotransporter.** *J Neurochem.* 74(6):2622-5.

For Research Use Only